

Product Datasheet

Cytokeratin 14 Antibody (KRT14/2375)

NBP3-07600-100ug

Unit Size: 100 ug

Store at 4C.

www.novusbio.com



technical@novusbio.com

Protocols, Publications, Related Products, Reviews, Research Tools and Images at:
www.novusbio.com/NBP3-07600

Updated 7/16/2024 v.20.1

Earn rewards for product
reviews and publications.

Submit a publication at www.novusbio.com/publications

Submit a review at www.novusbio.com/reviews/destination/NBP3-07600



NBP3-07600-100ug**Cytokeratin 14 Antibody (KRT14/2375)**

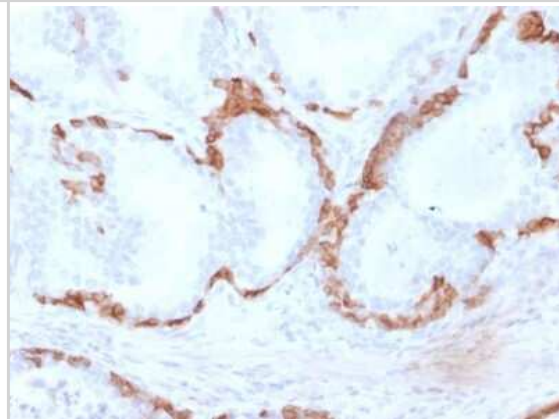
Product Information	
Unit Size	100 ug
Concentration	0.2 mg/ml
Storage	Store at 4C.
Clonality	Monoclonal
Clone	KRT14/2375
Preservative	0.05% Sodium Azide
Isotype	IgG2a Kappa
Purity	Protein A or G purified
Buffer	10 mM PBS with 0.05% BSA
Target Molecular Weight	50 kDa

Product Description	
Description	200ug/ml of antibody purified from Bioreactor Concentrate by Protein A or G. Prepared in 10 mM PBS with 0.05% BSA & 0.05% azide. Also available WITHOUT BSA & azide at 1.0 mg/ml. (NBP3-08531) Antibody with azide - store at 2 to 8C. Antibody without azide - store at -20 to -80C.
Host	Mouse
Gene ID	3861
Gene Symbol	KRT14
Species	Human, Mouse, Rat, Porcine
Marker	Squamous Cell Marker
Specificity/Sensitivity	Cytokeratin 14 (CK14) belongs to the type I (or A or acidic) subfamily of low molecular weight keratins and exists in combination with keratin 5 (type II or B or basic). CK14 is found in basal cells of squamous epithelia, some glandular epithelia, myoepithelium, and mesothelial cells. Anti-CK14 is useful in differentiating squamous cell carcinomas from poorly differentiated epithelial tumors. Anti-CK14 is one of the specific basal markers for distinguishing between basal and non-basal subtypes of breast carcinomas. Anti-CK14 is also a good marker for differentiation of intraductal from invasive salivary duct carcinoma by the positive staining of basal cells surrounding the in-situ neoplasm as well as for differentiation of benign prostate from prostate carcinoma. Furthermore, this antibody has been useful in separating oncocytic tumors of the kidney from its renal mimics, and in identifying metaplastic carcinomas of the breast.
Immunogen	Recombinant human Cytokeratin 14 fragment (around aa351-472) (exact sequence is proprietary) (Uniprot: P02533)

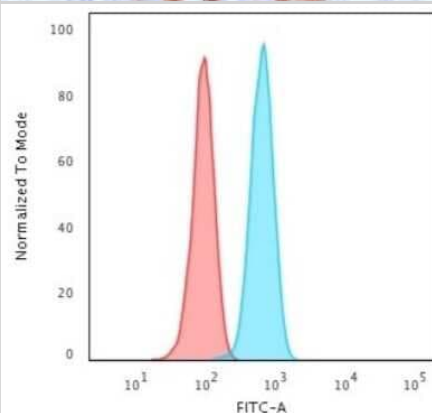
Product Application Details	
Applications	Flow Cytometry, Immunohistochemistry-Paraffin
Recommended Dilutions	Flow Cytometry 1-2 ug/million cells, Immunohistochemistry-Paraffin 1-2 ug/ml
Application Notes	Immunohistochemistry (Formalin-fixed): 1-2ug/ml for 30 min at RT. Staining of formalin-fixed tissues requires heating tissue sections in 10mM Tris with 1mM EDTA, pH 9.0, for 45 min at 95C followed by cooling at RT for 20 minutes. Optimal dilution for a specific application should be determined.

Images

Immunohistochemistry-Paraffin: Cytokeratin 14 Antibody (KRT14/2375) [NBP3-07600] - Formalin-fixed, paraffin-embedded human Prostate Carcinoma stained with Cytokeratin 14 Mouse Monoclonal Antibody (KRT14/2375).



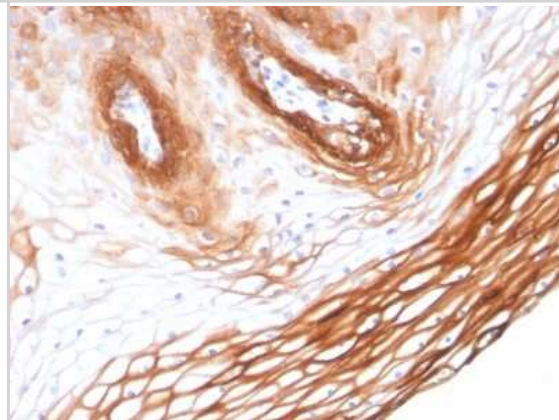
Flow Cytometry: Cytokeratin 14 Antibody (KRT14/2375) [NBP3-07600] - Flow Cytometric Analysis of HeLa cells using Cytokeratin 14 Mouse Monoclonal Antibody ((KRT14/2375) followed by goat anti- Mouse IgG-CF488 (Blue); Isotype Control (Red).



Immunohistochemistry-Paraffin: Cytokeratin 14 Antibody (KRT14/2375) [NBP3-07600] - Formalin-fixed, paraffin-embedded human Prostate Carcinoma stained with Cytokeratin 14 Mouse Monoclonal Antibody (KRT14/2375).



Immunohistochemistry-Paraffin: Cytokeratin 14 Antibody (KRT14/2375) [NBP3-07600] - Formalin-fixed, paraffin-embedded human Skin stained with Cytokeratin 14 Mouse Monoclonal Antibody (KRT14/2375).





Novus Biologicals USA

10730 E. Briarwood Avenue
Centennial, CO 80112
USA

Phone: 303.730.1950

Toll Free: 1.888.506.6887

Fax: 303.730.1966

nb-customerservice@bio-techne.com

Bio-Techne Canada

21 Canmotor Ave
Toronto, ON M8Z 4E6
Canada

Phone: 905.827.6400

Toll Free: 855.668.8722

Fax: 905.827.6402

canada.inquires@bio-techne.com

Bio-Techne Ltd

19 Barton Lane
Abingdon Science Park
Abingdon, OX14 3NB, United Kingdom

Phone: (44) (0) 1235 529449

Free Phone: 0800 37 34 15

Fax: (44) (0) 1235 533420

info.EMEA@bio-techne.com

General Contact Information

www.novusbio.com

Technical Support: nb-technical@bio-techne.com

Orders: nb-customerservice@bio-techne.com

General: novus@novusbio.com

Products Related to NBP3-07600-100ug

HAF007	Goat anti-Mouse IgG Secondary Antibody [HRP]
NB720-B	Rabbit anti-Mouse IgG (H+L) Secondary Antibody [Biotin]
NBP1-96981-0.5mg	Mouse IgG2a Kappa Isotype Control (M2AK)
NBP1-72467-100ug	Recombinant Human Cytokeratin 14 His Protein

Limitations

This product is for research use only and is not approved for use in humans or in clinical diagnosis. Primary Antibodies are guaranteed for 1 year from date of receipt.

For more information on our 100% guarantee, please visit www.novusbio.com/guarantee

Earn gift cards/discounts by submitting a review: www.novusbio.com/reviews/submit/NBP3-07600

Earn gift cards/discounts by submitting a publication using this product:
www.novusbio.com/publications

