

# Product Datasheet

## **SARS-CoV-2 Spike S1 Antibody (SP185) - Azide and BSA Free** **NBP3-07065**

Unit Size: 0.05 mg

Store at 4C short term. Aliquot and store at -20C long term. Avoid freeze-thaw cycles.

[www.novusbio.com](http://www.novusbio.com)



[technical@novusbio.com](mailto:technical@novusbio.com)

Protocols, Publications, Related Products, Reviews, Research Tools and Images at:  
[www.novusbio.com/NBP3-07065](http://www.novusbio.com/NBP3-07065)

Updated 10/23/2025 v.20.1

Earn rewards for product reviews and publications.

Submit a publication at [www.novusbio.com/publications](http://www.novusbio.com/publications)

Submit a review at [www.novusbio.com/reviews/destination/NBP3-07065](http://www.novusbio.com/reviews/destination/NBP3-07065)



**NBP3-07065****SARS-CoV-2 Spike S1 Antibody (SP185) - Azide and BSA Free**

<b>Product Information</b>	
<b>Unit Size</b>	0.05 mg
<b>Concentration</b>	Please see the vial label for concentration. If unlisted please contact technical services.
<b>Storage</b>	Store at 4C short term. Aliquot and store at -20C long term. Avoid freeze-thaw cycles.
<b>Clonality</b>	Monoclonal
<b>Clone</b>	SP185
<b>Preservative</b>	No Preservative
<b>Isotype</b>	IgG Kappa
<b>Purity</b>	Protein A purified
<b>Buffer</b>	PBS (pH 7.2)

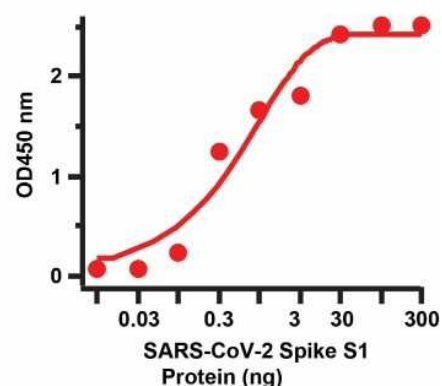
<b>Product Description</b>	
<b>Description</b>	The antibody was expressed in HEK293F cells, and subsequently obtained from cell supernatant by protein A affinity chromatography.
<b>Host</b>	Rabbit
<b>Gene ID</b>	43740568
<b>Gene Symbol</b>	S
<b>Species</b>	SARS-CoV-2
<b>Immunogen</b>	Recombinant SARS-CoV-2 Spike S1 protein

<b>Product Application Details</b>	
<b>Applications</b>	ELISA, Immunohistochemistry
<b>Recommended Dilutions</b>	ELISA, Immunohistochemistry

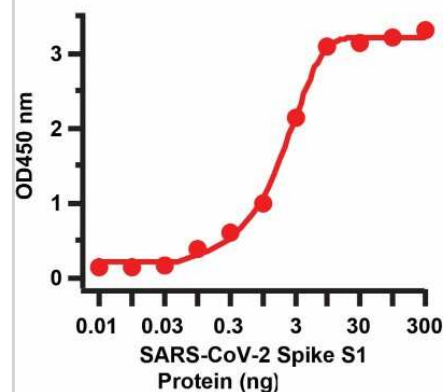


## Images

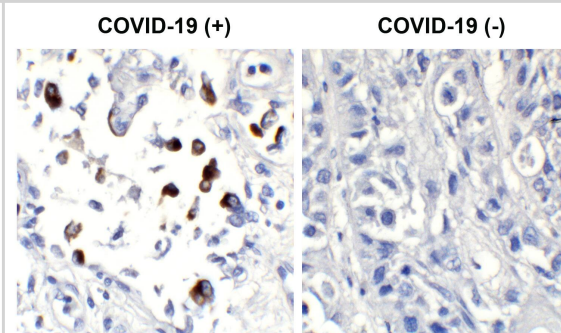
**Sandwich ELISA: SARS-CoV-2 Spike S1 Antibody (SP185) [NBP3-07065]** - Sandwich ELISA for SARS-CoV-2 Spike S1 Matched Pair Antibodies. Antibodies: SARS-CoV-2 (COVID-19) Spike Antibodies, NBP3-07065 and NBP3-26919. A sandwich ELISA was performed using SARS-CoV-2 Spike S1 antibody (NBP3-07065, 2ug/ml) as capture antibody, the Spike S1 recombinant protein as the binding protein, and the anti-SARS-CoV-2 Spike S1 antibody (NBP3-26919, 1ug/ml) as the detection antibody. Secondary: Mouse anti-human IgG HRP conjugate at 1:10000 dilution. Detection range is from 0.03 ng to 300 ng. EC50 = 1.58 ng.



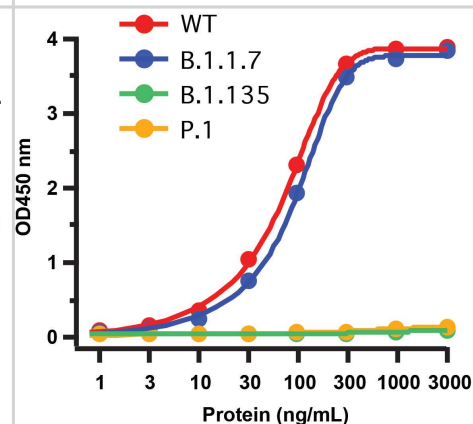
**Sandwich ELISA: SARS-CoV-2 Spike S1 Antibody (SP185) [NBP3-07065]** - Sandwich ELISA for SARS-CoV-2 Spike S1 Matched Pair Antibodies. A sandwich ELISA was performed using SARS-CoV-2 Spike S1 antibody (NBP3-07065, 2ug/ml) as capture antibody, a Spike S1 recombinant protein as the binding protein, and an anti-SARS-CoV-2 Spike S1 antibody (1ug/ml) as the detection antibody. Secondary: Streptavidin-HRP at 1:10000 dilution. Detection range is from 0.03 ng to 300 ng. EC50 = 1.96 ng



**Immunohistochemistry: SARS-CoV-2 Spike S1 Antibody (SP185) - Azide and BSA Free [NBP3-07065]** - Validation of SARS-CoV-2 (COVID-19) Spike in COVID-19 Patient Lung. Immunohistochemical analysis of paraffin-embedded COVID-19 patient lung tissue using anti- SARS-CoV-2 (COVID-19) Spike antibody (3 ug/mL). Tissue was fixed with formaldehyde and blocked with 10% serum for 1 h at RT; antigen retrieval was by heat mediation with a citrate buffer (pH6). Samples were incubated with primary antibody overnight at 4C. A goat anti-rabbit IgG H&L (HRP) at 1/250 was used as secondary. Counter stained with Hematoxylin. Strong signal of SARS-COV-2 Spike protein was observed in the macrophages of COVID-19 patient lung, but not in non-COVID-19 patient lung.



**ELISA: SARS-CoV-2 Spike S1 Antibody (SP185) - Azide and BSA Free [NBP3-07065]** - Coating Antigen: SARS-CoV-2 full length spike proteins, including WT, UK variant (B.1.1.7), SA variant (B.1.135) and Brazil (P.1). Dilution: 1-3000 ng/mL. Incubate at 4C overnight. Detection Antibodies: SARS-CoV-2 Spike S1 Antibody, 0.1 ug/mL, incubate at RT for 1 hr. Secondary Antibodies: Goat anti-rabbit HRP at 1:20,000, incubate at RT for 1 hr. Spike S1 antibody cannot detect SA variant (B.1.135) and Brazil (P.1), both of which carry more mutations in RBD as compared to UK variant (B.1.1.7).





### **Novus Biologicals USA**

10730 E. Briarwood Avenue  
Centennial, CO 80112  
USA  
Phone: 303.730.1950  
Toll Free: 1.888.506.6887  
Fax: 303.730.1966  
nb-customerservice@bio-techne.com

### **Bio-Techne Canada**

21 Canmotor Ave  
Toronto, ON M8Z 4E6  
Canada  
Phone: 905.827.6400  
Toll Free: 855.668.8722  
Fax: 905.827.6402  
canada.inquires@bio-techne.com

### **Bio-Techne Ltd**

19 Barton Lane  
Abingdon Science Park  
Abingdon, OX14 3NB, United Kingdom  
Phone: (44) (0) 1235 529449  
Free Phone: 0800 37 34 15  
Fax: (44) (0) 1235 533420  
info.EMEA@bio-techne.com

### **General Contact Information**

www.novusbio.com  
Technical Support: nb-technical@bio-techne.com  
Orders: nb-customerservice@bio-techne.com  
General: novus@novusbio.com

### **Products Related to NBP3-07065**

---

HAF008	Goat anti-Rabbit IgG Secondary Antibody [HRP]
NB7160	Goat anti-Rabbit IgG (H+L) Secondary Antibody [HRP]
NBP2-90985	Recombinant SARS-CoV-2 Spike S1 His (C-Term) Protein
NBP2-90982	Recombinant SARS-CoV-2 Spike S1 (RBD) His (C-Term) Protein

---

### **Limitations**

This product is for research use only and is not approved for use in humans or in clinical diagnosis. Primary Antibodies are guaranteed for 1 year from date of receipt.

For more information on our 100% guarantee, please visit [www.novusbio.com/guarantee](http://www.novusbio.com/guarantee)

Earn gift cards/discounts by submitting a review: [www.novusbio.com/reviews/submit/NBP3-07065](http://www.novusbio.com/reviews/submit/NBP3-07065)

Earn gift cards/discounts by submitting a publication using this product:  
[www.novusbio.com/publications](http://www.novusbio.com/publications)

