

Product Datasheet

Recombinant Human Glucose 6 phosphate isomerase His Protein NBP3-07000

Unit Size: 0.1 mg

Store at 4C short term. Aliquot and store at -20C long term. Avoid freeze-thaw cycles.

www.novusbio.com



technical@novusbio.com

Protocols, Publications, Related Products, Reviews, Research Tools and Images at:
www.novusbio.com/NBP3-07000

Updated 7/26/2021 v.20.1

Earn rewards for product
reviews and publications.

Submit a publication at www.novusbio.com/publications

Submit a review at www.novusbio.com/reviews/destination/NBP3-07000



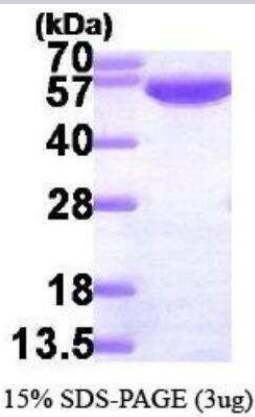
NBP3-07000

Recombinant Human Glucose 6 phosphate isomerase His Protein

Product Information	
Unit Size	0.1 mg
Concentration	1 mg/ml
Storage	Store at 4C short term. Aliquot and store at -20C long term. Avoid freeze-thaw cycles.
Preservative	No Preservative
Purity	>95%, by SDS-PAGE
Buffer	20 mM Tris-HCl buffer (pH8.0), 1 mM DTT, 10% glycerol
Target Molecular Weight	65.3 kDa
Product Description	
Description	<p>A recombinant protein with a N-Terminal His-tag and corresponding to the amino acids 1- 558 of Human Glucose 6 phosphate isomerase</p> <p>Source: E.coli</p> <p>Amino Acid Sequence: MGSSHHHHHSSGLVPRGSHMAALTRDPQFQKLQQWYREHRSELNLRRLFD ANKDRFNHFSLTLNTNHGHILVDYSKNLVTEDVMRMLVDLAKSRGVEAARERM FNGEKINYTEGRAVLHVALRNRNTPILVDGKDVMPEVNKVLDKMKSFCQVR SGDWKGYTGKTITDVINIGIGGSDLGPLMVTEALKPYS SGGPRVWYVSNIDGTH IAKTLAQLNPESSLFIIASKTFTTQETITNAETAKEWFLQAAKDPSAVAKHFVALS TNTTKVKEFGIDPQNMFEFWDWVGGRYSLWSAIGLSIALHVGFDNFEQLLSGA HWM DQHFR TTPLEKNAPVLLALLGIWYINCFGCETHAMLPYDQYLHRFAAYFQ QGDMESNGKYITKSGTRVDHQTGPIVWGEPTNGQHAFYQLIHQGTKMIPCD FLIPVQTQHPIRKGLHHKILLANFLAQTEALMRGKSTEEARKELQAAGKSPEDLE RLLPHKVFEGNRPTNSIVFTKLTPFMLGALVAMYEHKIFVQGIIWDINSFDQWGV ELGKQLAKKIEPELDGSAQVTSHDASTNGLINFIKQQREARVQ</p>
Gene ID	2821
Gene Symbol	GPI
Species	Human
Endotoxin Note	< 1.0 EU per 1 microgram of protein (determined by LAL method)
Product Application Details	
Applications	SDS-Page
Recommended Dilutions	SDS-Page

Images

SDS-Page: Recombinant Human Glucose 6 phosphate isomerase Protein [NBP3-07000] - Glucose 6 phosphate isomerase, 65.3 kDa (578aa), confirmed by MALDI-TOF with a purity of 95% by SDS - PAGE.





Novus Biologicals USA

10730 E. Briarwood Avenue
Centennial, CO 80112
USA
Phone: 303.730.1950
Toll Free: 1.888.506.6887
Fax: 303.730.1966
nb-customerservice@bio-techne.com

Bio-Techne Canada

21 Canmotor Ave
Toronto, ON M8Z 4E6
Canada
Phone: 905.827.6400
Toll Free: 855.668.8722
Fax: 905.827.6402
canada.inquires@bio-techne.com

Bio-Techne Ltd

19 Barton Lane
Abingdon Science Park
Abingdon, OX14 3NB, United Kingdom
Phone: (44) (0) 1235 529449
Free Phone: 0800 37 34 15
Fax: (44) (0) 1235 533420
info.EMEA@bio-techne.com

General Contact Information

www.novusbio.com
Technical Support: nb-technical@bio-techne.com
Orders: nb-customerservice@bio-techne.com
General: novus@novusbio.com

Products Related to NBP3-07000

NBP2-52232-0.02mg	Recombinant Human Glucose 6 phosphate isomerase His Protein
210-TA-005	TNF-alpha [Unconjugated]
NBP2-02541	Glucose 6 phosphate isomerase Antibody (OTI2D2)
NB100-524	NOD2 Antibody (2D9) - BSA Free

Limitations

This product is for research use only and is not approved for use in humans or in clinical diagnosis. This product is guaranteed for 1 year from date of receipt.

For more information on our 100% guarantee, please visit www.novusbio.com/guarantee

Earn gift cards/discounts by submitting a review: www.novusbio.com/reviews/submit/NBP3-07000

Earn gift cards/discounts by submitting a publication using this product:
www.novusbio.com/publications

