

# Product Datasheet

## MAP1B Antibody - BSA Free NBP3-06024-100ul

Unit Size: 100 ul

Store at 4C short term. Aliquot and store at -20C long term. Avoid freeze-thaw cycles.

[www.novusbio.com](http://www.novusbio.com)



[technical@novusbio.com](mailto:technical@novusbio.com)

Protocols, Publications, Related Products, Reviews, Research Tools and Images at:  
[www.novusbio.com/NBP3-06024](http://www.novusbio.com/NBP3-06024)

Updated 2/26/2025 v.20.1

Earn rewards for product  
reviews and publications.

Submit a publication at [www.novusbio.com/publications](http://www.novusbio.com/publications)

Submit a review at [www.novusbio.com/reviews/destination/NBP3-06024](http://www.novusbio.com/reviews/destination/NBP3-06024)



**NBP3-06024-100ul**

MAP1B Antibody - BSA Free

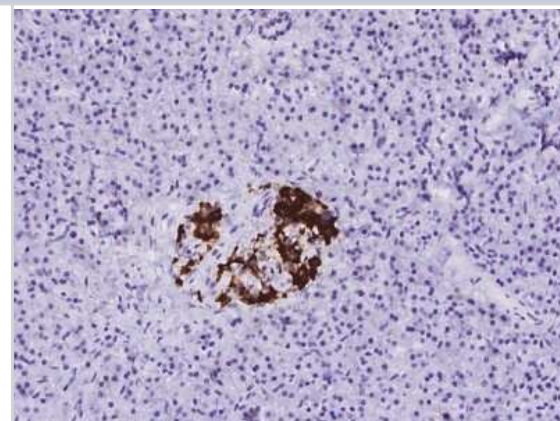
| Product Information |   |
|---------------------|---|
| Unit Size           | 100 ul  |
| Concentration       | Please see the vial label for concentration. If unlisted please contact technical services. |
| Storage             | Store at 4C short term. Aliquot and store at -20C long term. Avoid freeze-thaw cycles.      |
| Clonality           | Polyclonal  |
| Preservative        | 0.03% Proclin 300   |
| Isotype             | IgG   |
| Purity              | Antigen and protein A Affinity-purified   |
| Buffer              | PBS   |

| Product Description |   |
|---------------------|---|
| Description         | This antibody can be stored at 2C-8C for one month without detectable loss of activity. Antibody products are stable for twelve months from date of receipt when stored at -20C to -80C. Avoid repeated freeze-thaw cycles. |
| Host                | Rabbit  |
| Gene ID             | 4131  |
| Gene Symbol         | MAP1B   |
| Species             | Human   |
| Immunogen           | Produced in rabbits immunized with E. coli-derived Human MAP1B fragment.  |

| Product Application Details |  |
|-----------------------------|--|
| Applications                | Immunohistochemistry-Paraffin            |
| Recommended Dilutions       | Immunohistochemistry-Paraffin 1:50-1:200 |

**Images**

Immunohistochemistry-Paraffin: MAP1B Antibody [NBP3-06024] - Immunochemical staining of human MAP1B in human pancreas with rabbit polyclonal antibody at 1:100 dilution, formalin-fixed paraffin embedded sections.





### **Novus Biologicals USA**

10730 E. Briarwood Avenue  
Centennial, CO 80112  
USA  
Phone: 303.730.1950  
Toll Free: 1.888.506.6887  
Fax: 303.730.1966  
nb-customerservice@bio-techne.com

### **Bio-Techne Canada**

21 Canmotor Ave  
Toronto, ON M8Z 4E6  
Canada  
Phone: 905.827.6400  
Toll Free: 855.668.8722  
Fax: 905.827.6402  
canada.inquires@bio-techne.com

### **Bio-Techne Ltd**

19 Barton Lane  
Abingdon Science Park  
Abingdon, OX14 3NB, United Kingdom  
Phone: (44) (0) 1235 529449  
Free Phone: 0800 37 34 15  
Fax: (44) (0) 1235 533420  
info.EMEA@bio-techne.com

### **General Contact Information**

www.novusbio.com  
Technical Support: nb-technical@bio-techne.com  
Orders: nb-customerservice@bio-techne.com  
General: novus@novusbio.com

### **Products Related to NBP3-06024-100ul**

---

|               |   |
|---------------|---|
| HAF008        | Goat anti-Rabbit IgG Secondary Antibody [HRP]       |
| NB7160        | Goat anti-Rabbit IgG (H+L) Secondary Antibody [HRP] |
| NBP2-24891    | Rabbit IgG Isotype Control                          |
| NBP1-81261PEP | MAP1B Recombinant Protein Antigen                   |

---

### **Limitations**

This product is for research use only and is not approved for use in humans or in clinical diagnosis. Primary Antibodies are guaranteed for 1 year from date of receipt.

For more information on our 100% guarantee, please visit [www.novusbio.com/guarantee](http://www.novusbio.com/guarantee)

Earn gift cards/discounts by submitting a review: [www.novusbio.com/reviews/submit/NBP3-06024](http://www.novusbio.com/reviews/submit/NBP3-06024)

Earn gift cards/discounts by submitting a publication using this product:  
[www.novusbio.com/publications](http://www.novusbio.com/publications)

