

# Product Datasheet

## **Poly-Ubiquitin Antibody - K27 Linkage - Azide and BSA Free** **NBP3-05658**

Unit Size: 100 ul

Store at -20C. Avoid freeze-thaw cycles.

[www.novusbio.com](http://www.novusbio.com)



[technical@novusbio.com](mailto:technical@novusbio.com)

Protocols, Publications, Related Products, Reviews, Research Tools and Images at:  
[www.novusbio.com/NBP3-05658](http://www.novusbio.com/NBP3-05658)

Updated 9/22/2025 v.20.1

Earn rewards for product reviews and publications.

Submit a publication at [www.novusbio.com/publications](http://www.novusbio.com/publications)

Submit a review at [www.novusbio.com/reviews/destination/NBP3-05658](http://www.novusbio.com/reviews/destination/NBP3-05658)



**NBP3-05658**

Poly-Ubiquitin Antibody - K27 Linkage - Azide and BSA Free

Product Information	
Unit Size	100 ul
Concentration	Please see the vial label for concentration. If unlisted please contact technical services.
Storage	Store at -20C. Avoid freeze-thaw cycles.
Clonality	Polyclonal
Preservative	0.01% Thimerosal
Isotype	IgG
Purity	Affinity purified
Buffer	PBS (pH 7.3), 50% glycerol

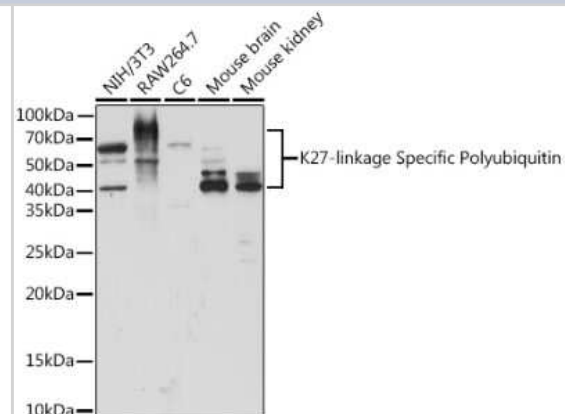
Product Description	
Description	Novus Biologicals Rabbit Poly-Ubiquitin Antibody - K27 Linkage - Azide and BSA Free (NBP3-05658) is a polyclonal antibody validated for use in WB. All Novus Biologicals antibodies are covered by our 100% guarantee.
Host	Rabbit
Gene ID	6233
Gene Symbol	RPS27A
Species	All Species
Immunogen	A synthetic peptide corresponding to a sequence containing polyubiquitinated protein (K27 linkage).

Product Application Details	
Applications	Western Blot, Dot Blot
Recommended Dilutions	Western Blot 1:500 - 1:2000, Dot Blot 1:500 - 1:1000

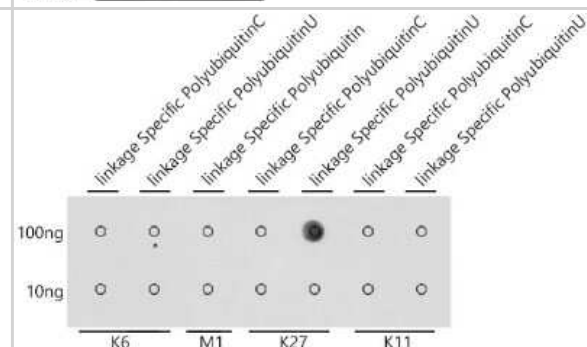


## Images

**Western Blot: Poly-Ubiquitin Antibody - K27 Linkage [NBP3-05658]** - Western blot analysis of extracts of various cell lines, using Poly-Ubiquitin Rabbit pAb (NBP3-05658) at 1:500 dilution. Secondary antibody: HRP Goat Anti-Rabbit IgG (H+L) at 1:10000 dilution. Lysates/proteins: 25ug per lane. Blocking buffer: 3% nonfat dry milk in TBST. Detection: ECL Enhanced Kit. Exposure time: 180s.



**Dot Blot: Poly-Ubiquitin Antibody - K27 Linkage [NBP3-05658]** - Dot-blot analysis of all sorts of peptides using Poly-Ubiquitin antibody (NBP3-05658) at 1:1000 dilution.





### **Novus Biologicals USA**

10730 E. Briarwood Avenue  
Centennial, CO 80112  
USA  
Phone: 303.730.1950  
Toll Free: 1.888.506.6887  
Fax: 303.730.1966  
nb-customerservice@bio-techne.com

### **Bio-Techne Canada**

21 Canmotor Ave  
Toronto, ON M8Z 4E6  
Canada  
Phone: 905.827.6400  
Toll Free: 855.668.8722  
Fax: 905.827.6402  
canada.inquires@bio-techne.com

### **Bio-Techne Ltd**

19 Barton Lane  
Abingdon Science Park  
Abingdon, OX14 3NB, United Kingdom  
Phone: (44) (0) 1235 529449  
Free Phone: 0800 37 34 15  
Fax: (44) (0) 1235 533420  
info.EMEA@bio-techne.com

### **General Contact Information**

[www.novusbio.com](http://www.novusbio.com)  
Technical Support: nb-technical@bio-techne.com  
Orders: nb-customerservice@bio-techne.com  
General: novus@novusbio.com

### **Limitations**

This product is for research use only and is not approved for use in humans or in clinical diagnosis. Primary Antibodies are guaranteed for 1 year from date of receipt.

For more information on our 100% guarantee, please visit [www.novusbio.com/guarantee](http://www.novusbio.com/guarantee)

Earn gift cards/discounts by submitting a review: [www.novusbio.com/reviews/submit/NBP3-05658](http://www.novusbio.com/reviews/submit/NBP3-05658)

Earn gift cards/discounts by submitting a publication using this product:  
[www.novusbio.com/publications](http://www.novusbio.com/publications)

