

Product Datasheet

beta-Synuclein Antibody - BSA Free NBP3-05556-100ul

Unit Size: 100 ul

Store at 4C short term. Store at -20C long term. Avoid freeze-thaw cycles.

www.novusbio.com



technical@novusbio.com

Protocols, Publications, Related Products, Reviews, Research Tools and Images at:
www.novusbio.com/NBP3-05556

Updated 2/26/2025 v.20.1

Earn rewards for product
reviews and publications.

Submit a publication at www.novusbio.com/publications

Submit a review at www.novusbio.com/reviews/destination/NBP3-05556



NBP3-05556-100ul

beta-Synuclein Antibody - BSA Free

Product Information	
Unit Size	100 ul
Concentration	1 mg/ml
Storage	Store at 4C short term. Store at -20C long term. Avoid freeze-thaw cycles.
Clonality	Polyclonal
Preservative	0.035% Sodium Azide
Isotype	IgG1
Purity	Immunogen affinity purified
Buffer	50% PBS, 50% glycerol
Target Molecular Weight	15 kDa

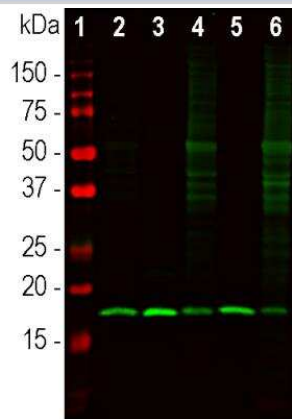
Product Description	
Host	Rabbit
Gene ID	6620
Gene Symbol	SNCB
Species	Human, Mouse, Rat
Immunogen	C-terminal peptide of human beta-Synuclein EPEGESYEDPPQEEYQEYEPEA coupled to KLH

Product Application Details	
Applications	Western Blot, Immunocytochemistry/ Immunofluorescence
Recommended Dilutions	Western Blot 1:1000-2000, Immunocytochemistry/ Immunofluorescence 1:1000-2000

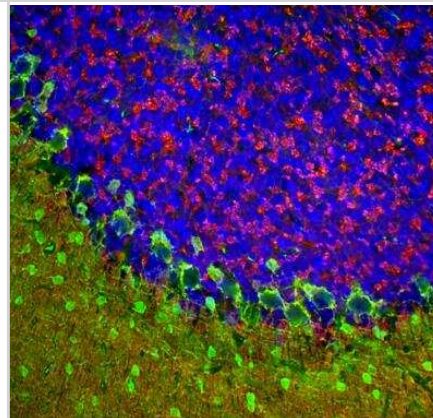


Images

Western Blot: beta-Synuclein Antibody [NBP3-05556] - Western blot analysis of different tissue lysates using beta-Synuclein Antibody at a dilution of 1:1,000 in green: [1] protein standard (red), [2] mouse cerebellum [3] mouse hippocampus, [4] rat cerebellum, [5] rat hippocampus, and [6] cow cerebellum. Strong band at about 17kDa corresponds to the beta-Synuclein protein.



Immunocytochemistry/Immunofluorescence: beta-Synuclein Antibody [NBP3-05556] - Immunofluorescent analysis of rat cerebellum section stained with beta-Synuclein Antibody at a dilution of 1:1,000 in red, and costained with chicken pAb to parvalbumin at a dilution of 1:5,000 in green. The blue is Hoechst staining of nuclear DNA. Following transcardial perfusion of rat with 4% paraformaldehyde, brain was post fixed for 24 hours, cut to 45uM, and free-floating sections were stained with above antibodies. The beta-Synuclein antibody detects protein concentrated in synaptic regions, and parvalbumin antibody labels the perikarya and dendrites of Purkinje cells, and interneurons in the molecular layer of the cerebellum.





Novus Biologicals USA

10730 E. Briarwood Avenue
Centennial, CO 80112
USA
Phone: 303.730.1950
Toll Free: 1.888.506.6887
Fax: 303.730.1966
nb-customerservice@bio-techne.com

Bio-Techne Canada

21 Canmotor Ave
Toronto, ON M8Z 4E6
Canada
Phone: 905.827.6400
Toll Free: 855.668.8722
Fax: 905.827.6402
canada.inquires@bio-techne.com

Bio-Techne Ltd

19 Barton Lane
Abingdon Science Park
Abingdon, OX14 3NB, United Kingdom
Phone: (44) (0) 1235 529449
Free Phone: 0800 37 34 15
Fax: (44) (0) 1235 533420
info.EMEA@bio-techne.com

General Contact Information

www.novusbio.com
Technical Support: nb-technical@bio-techne.com
Orders: nb-customerservice@bio-techne.com
General: novus@novusbio.com

Products Related to NBP3-05556-100ul

HAF008	Goat anti-Rabbit IgG Secondary Antibody [HRP]
NB7160	Goat anti-Rabbit IgG (H+L) Secondary Antibody [HRP]
NBP3-14775-100ug	Recombinant Human beta-Synuclein Active, Monomer Protein
NBP3-14777-100ug	Recombinant Human beta-Synuclein Active, Pre-formed Fibrils, (Type 1) Protein

Limitations

This product is for research use only and is not approved for use in humans or in clinical diagnosis. Primary Antibodies are guaranteed for 1 year from date of receipt.

For more information on our 100% guarantee, please visit www.novusbio.com/guarantee

Earn gift cards/discounts by submitting a review: www.novusbio.com/reviews/submit/NBP3-05556

Earn gift cards/discounts by submitting a publication using this product:
www.novusbio.com/publications

