

Product Datasheet

beta-Synuclein Antibody (6A10) - BSA Free NBP3-05529-100ul

Unit Size: 100 ul

Store at 4C short term. Store at -20C long term. Avoid freeze-thaw cycles.

www.novusbio.com



technical@novusbio.com

Protocols, Publications, Related Products, Reviews, Research Tools and Images at:
www.novusbio.com/NBP3-05529

Updated 2/26/2025 v.20.1

Earn rewards for product
reviews and publications.

Submit a publication at www.novusbio.com/publications

Submit a review at www.novusbio.com/reviews/destination/NBP3-05529



NBP3-05529-100ul

beta-Synuclein Antibody (6A10) - BSA Free

Product Information	
Unit Size	100 ul
Concentration	1 mg/ml
Storage	Store at 4C short term. Store at -20C long term. Avoid freeze-thaw cycles.
Clonality	Monoclonal
Clone	6A10
Preservative	0.035% Sodium Azide
Isotype	IgG1
Purity	Immunogen affinity purified
Buffer	50% PBS, 50% glycerol
Target Molecular Weight	17 kDa

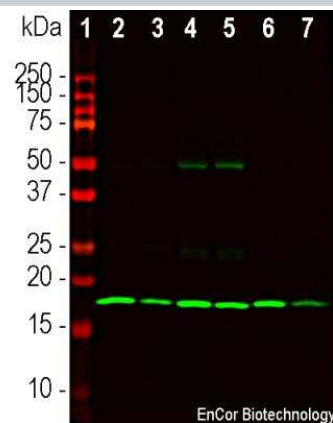
Product Description	
Host	Mouse
Gene ID	6620
Gene Symbol	SNCB
Species	Human, Mouse, Rat, Porcine, Bovine
Immunogen	C-terminal peptide of human beta-Synuclein EPEGESYEDPPQEEYQEYEPEA coupled to KLH

Product Application Details	
Applications	Western Blot, Immunocytochemistry/ Immunofluorescence, Immunohistochemistry
Recommended Dilutions	Western Blot 1:1000, Immunohistochemistry, Immunocytochemistry/ Immunofluorescence 1:500 - 1:1000

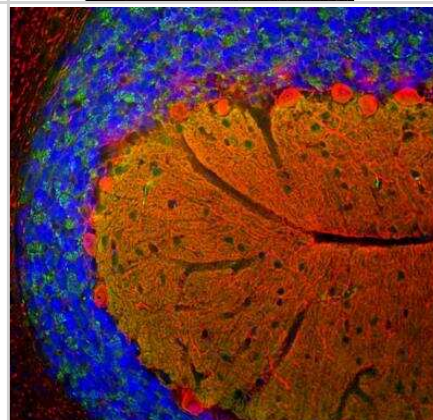


Images

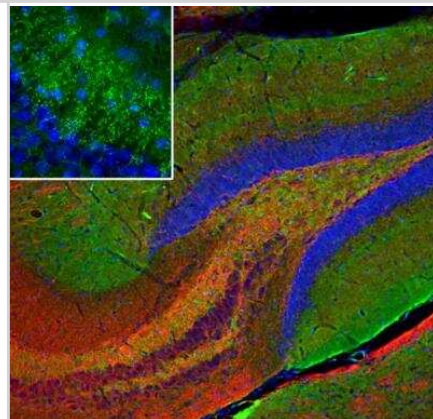
Western Blot: beta-Synuclein Antibody [NBP3-05529] - Western blot analysis of different tissue lysates using beta-Synuclein Antibody at a dilution of 1:1,000 in green: [1] protein standard (red), [2] rat cortex [3] rat cerebellum, [4] mouse cortex, [5] mouse cerebellum, [6] cow cortex, and [7] cow cerebellum. Strong band at about 17 kDa corresponds to beta-Synuclein protein.



Immunocytochemistry/Immunofluorescence: beta-Synuclein Antibody [NBP3-05529] - Immunofluorescent analysis of mouse hippocampus section stained with beta-Synuclein Antibody at a dilution of 1:500 in green, and costained with rabbit polyclonal antibody to C-terminal peptide of rat NF-L at a dilution of 1:5,000, in red. The blue is Hoechst staining of nuclear DNA. Following transcardial perfusion of mouse with 4% paraformaldehyde, brain was post fixed for 24 hours, cut to 45uM, and free-floating sections were stained with above antibodies. The beta-Synuclein antibody detects protein concentrated in synaptic regions, while the NF-L antibody labels dendrites and axons of neuronal cells.



Immunocytochemistry/Immunofluorescence: beta-Synuclein Antibody [NBP3-05529] - Immunofluorescent analysis of mouse hippocampus section stained with beta-Synuclein Antibody at a dilution of 1:500 in green, and costained with rabbit polyclonal antibody to C-terminal peptide of rat NF-L at a dilution of 1:5,000, in red. The blue is Hoechst staining of nuclear DNA. Following transcardial perfusion of mouse with 4% paraformaldehyde, brain was post fixed for 24 hours, cut to 45uM, and free-floating sections were stained with above antibodies. The beta-Synuclein Antibody detects protein concentrated in synaptic regions, while the NF-L antibody labels dendrites and axons of neuronal cells.





Novus Biologicals USA

10730 E. Briarwood Avenue
Centennial, CO 80112
USA
Phone: 303.730.1950
Toll Free: 1.888.506.6887
Fax: 303.730.1966
nb-customerservice@bio-techne.com

Bio-Techne Canada

21 Canmotor Ave
Toronto, ON M8Z 4E6
Canada
Phone: 905.827.6400
Toll Free: 855.668.8722
Fax: 905.827.6402
canada.inquires@bio-techne.com

Bio-Techne Ltd

19 Barton Lane
Abingdon Science Park
Abingdon, OX14 3NB, United Kingdom
Phone: (44) (0) 1235 529449
Free Phone: 0800 37 34 15
Fax: (44) (0) 1235 533420
info.EMEA@bio-techne.com

General Contact Information

www.novusbio.com
Technical Support: nb-technical@bio-techne.com
Orders: nb-customerservice@bio-techne.com
General: novus@novusbio.com

Products Related to NBP3-05529-100ul

HAF007	Goat anti-Mouse IgG Secondary Antibody [HRP]
NB720-B	Rabbit anti-Mouse IgG (H+L) Secondary Antibody [Biotin]
NBP1-97005-0.5mg	Mouse IgG1 Isotype Control (MG1)
NBP3-14775-100ug	Recombinant Human beta-Synuclein Active, Monomer Protein

Limitations

This product is for research use only and is not approved for use in humans or in clinical diagnosis. Primary Antibodies are guaranteed for 1 year from date of receipt.

For more information on our 100% guarantee, please visit www.novusbio.com/guarantee

Earn gift cards/discounts by submitting a review: www.novusbio.com/reviews/submit/NBP3-05529

Earn gift cards/discounts by submitting a publication using this product:
www.novusbio.com/publications

