

Product Datasheet

PA28 Activator gamma Subunit/PSME3 Antibody - Azide and BSA Free NBP3-03887-100ul

Unit Size: 100 ul

Store at -20C. Avoid freeze-thaw cycles.

www.novusbio.com



technical@novusbio.com

Protocols, Publications, Related Products, Reviews, Research Tools and Images at:
www.novusbio.com/NBP3-03887

Updated 9/9/2025 v.20.1

Earn rewards for product
reviews and publications.

Submit a publication at www.novusbio.com/publications

Submit a review at www.novusbio.com/reviews/destination/NBP3-03887



NBP3-03887-100ul

PA28 Activator gamma Subunit/PSME3 Antibody - Azide and BSA Free

Product Information

| | |
|----------------------|---|
| Unit Size | 100 ul |
| Concentration | Please see the vial label for concentration. If unlisted please contact technical services. |
| Storage | Store at -20C. Avoid freeze-thaw cycles. |
| Clonality | Polyclonal |
| Preservative | 0.01% Thimerosal |
| Isotype | IgG |
| Purity | Affinity purified |
| Buffer | PBS (pH 7.3), 50% glycerol |

Product Description

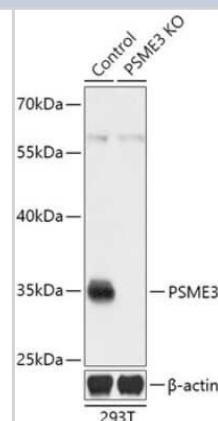
| | |
|--------------------|--|
| Description | Novus Biologicals Knockout (KO) Validated Rabbit PA28 Activator gamma Subunit/PSME3 Antibody - Azide and BSA Free (NBP3-03887) is a polyclonal antibody validated for use in WB. All Novus Biologicals antibodies are covered by our 100% guarantee. |
| Host | Rabbit |
| Gene ID | 10197 |
| Gene Symbol | PSME3 |
| Species | Human, Mouse |
| Immunogen | A synthetic peptide corresponding to a sequence within amino acids 200-254 of human PA28 Activator gamma Subunit/PSME3 (NP_005780.2). EDYRRTVTEIDEKEYISLRLLISELRNQYVTLHDMILKNIEKIKRPRSSNAETLY |

Product Application Details

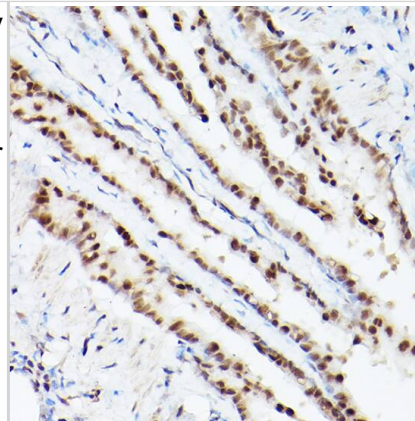
| | |
|------------------------------|--|
| Applications | Western Blot, Knockout Validated |
| Recommended Dilutions | Western Blot 1:1000 - 1:2000, Knockout Validated |

Images

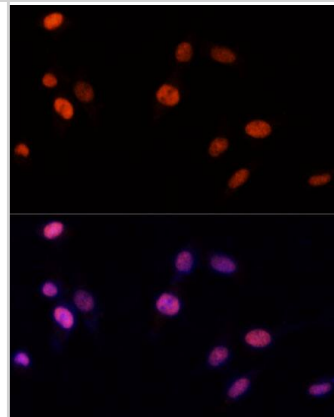
Western Blot: PA28 Activator gamma Subunit/PSME3 Antibody [NBP3-03887] - Analysis of extracts from normal (control) and PSME3 knockout (KO) 293T cells, using PA28 Activator gamma Subunit/PSME3 antibody at 1:3000 dilution. Secondary antibody: HRP Goat Anti-Rabbit IgG (H+L) at 1:10000 dilution. Lysates/proteins: 25ug per lane. Blocking buffer: 3% nonfat dry milk in TBST.



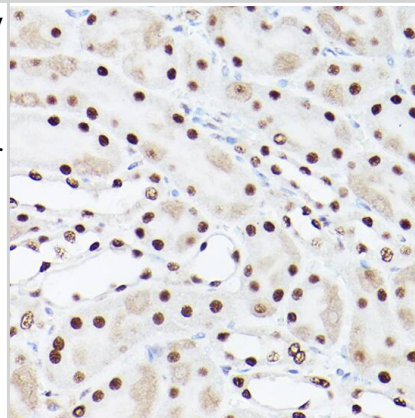
Immunohistochemistry: PA28 Activator gamma Subunit/PSME3 Antibody - Azide and BSA Free [PA28 Activator gamma Subunit/PSME3] -
Immunohistochemistry analysis of paraffin-embedded Mouse lung using PA28 Activator gamma Subunit/PSME3 Rabbit pAb at dilution of 1:100 (40x lens). Microwave antigen retrieval performed with 0.01M PBS Buffer (pH 7.2) prior to IHC staining.



Immunocytochemistry/ Immunofluorescence: PA28 Activator gamma Subunit/PSME3 Antibody - Azide and BSA Free [PA28 Activator gamma Subunit/PSME3] -
Immunofluorescence analysis of NIH-3T3 cells using PA28 Activator gamma Subunit/PSME3 Rabbit pAb at dilution of 1:100 (40x lens). Secondary antibody: Cy3-conjugated Goat anti-Rabbit IgG (H +L) at 1:500 dilution. Blue: DAPI for nuclear staining.



Immunohistochemistry: PA28 Activator gamma Subunit/PSME3 Antibody - Azide and BSA Free [PA28 Activator gamma Subunit/PSME3] -
Immunohistochemistry analysis of paraffin-embedded Rat kidney using PA28 Activator gamma Subunit/PSME3 Rabbit pAb at dilution of 1:100 (40x lens). Microwave antigen retrieval performed with 0.01M PBS Buffer (pH 7.2) prior to IHC staining.



Western Blot: PA28 Activator gamma Subunit/PSME3 Antibody - Azide and BSA Free [PA28 Activator gamma Subunit/PSME3] -
Western blot analysis of various lysates using PA28 Activator gamma Subunit/PSME3 Rabbit pAb at 1:3000 dilution.

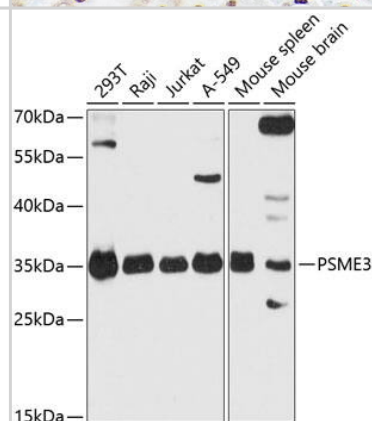
Secondary antibody: HRP-conjugated Goat anti-Rabbit IgG (H+L) at 1:10000 dilution.

Lysates/proteins: 25ug per lane.

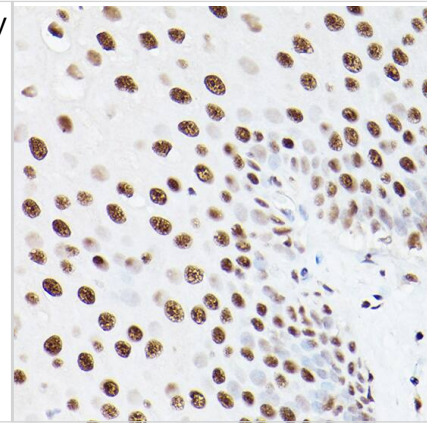
Blocking buffer: 3% nonfat dry milk in TBST.

Detection: ECL Basic Kit .

Exposure time: 30s.



Immunohistochemistry: PA28 Activator gamma Subunit/PSME3 Antibody - Azide and BSA Free [PA28 Activator gamma Subunit/PSME3] - Immunohistochemistry analysis of paraffin-embedded Human esophageal using PA28 Activator gamma Subunit/PSME3 Rabbit pAb at dilution of 1:100 (40x lens). Microwave antigen retrieval performed with 0.01M PBS Buffer (pH 7.2) prior to IHC staining.





Novus Biologicals USA

10730 E. Briarwood Avenue
Centennial, CO 80112
USA
Phone: 303.730.1950
Toll Free: 1.888.506.6887
Fax: 303.730.1966
nb-customerservice@bio-techne.com

Bio-Techne Canada

21 Canmotor Ave
Toronto, ON M8Z 4E6
Canada
Phone: 905.827.6400
Toll Free: 855.668.8722
Fax: 905.827.6402
canada.inquires@bio-techne.com

Bio-Techne Ltd

19 Barton Lane
Abingdon Science Park
Abingdon, OX14 3NB, United Kingdom
Phone: (44) (0) 1235 529449
Free Phone: 0800 37 34 15
Fax: (44) (0) 1235 533420
info.EMEA@bio-techne.com

General Contact Information

www.novusbio.com
Technical Support: nb-technical@bio-techne.com
Orders: nb-customerservice@bio-techne.com
General: novus@novusbio.com

Products Related to NBP3-03887-100ul

| | |
|---------------|--|
| HAF008 | Goat anti-Rabbit IgG Secondary Antibody [HRP] |
| NB7160 | Goat anti-Rabbit IgG (H+L) Secondary Antibody [HRP] |
| NBP2-24891 | Rabbit IgG Isotype Control |
| NBP1-83063PEP | PA28 Activator gamma Subunit/PSME3 Recombinant Protein Antigen |

Limitations

This product is for research use only and is not approved for use in humans or in clinical diagnosis. Primary Antibodies are guaranteed for 1 year from date of receipt.

For more information on our 100% guarantee, please visit www.novusbio.com/guarantee

Earn gift cards/discounts by submitting a review: www.novusbio.com/reviews/submit/NBP3-03887

Earn gift cards/discounts by submitting a publication using this product:
www.novusbio.com/publications

