

Product Datasheet

Rainbow Calibration Particle Set (6 peaks) NBP3-00505

Unit Size: 5 ml

Store at 4C in the dark. Do not freeze.

www.novusbio.com



technical@novusbio.com

Protocols, Publications, Related Products, Reviews, Research Tools and Images at:
www.novusbio.com/NBP3-00505

Updated 8/16/2020 v.20.1

Earn rewards for product
reviews and publications.

Submit a publication at www.novusbio.com/publications

Submit a review at www.novusbio.com/reviews/destination/NBP3-00505



NBP3-00505

Rainbow Calibration Particle Set (6 peaks)

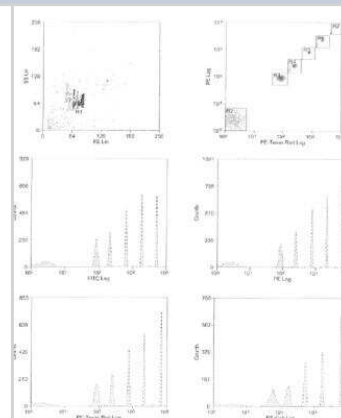
Product Information	
Unit Size	5 ml
Concentration	Please see the protocols for proper use of this product. If no protocol is available, contact technical services for assistance.
Storage	Store at 4C in the dark. Do not freeze.
Preservative	0.02% Sodium Azide
Buffer	Deionized water, 0.01% NP-40

Product Description	
Description	<p>Rainbow Calibration Particles are a mixture of fluorophore incorporated particles with 6 different fluorescent intensities that are used for calibrating flow cytometers:</p> <ul style="list-style-type: none"> • Excite particles at any wavelength from 365 to 650 nm. • Calibrate multiple channels with the same set of particles. • Enable non-spectral matching to common fluorophores such as FITC, PE, PE-Cy5. • Deliver durable performance since fluorophores are encased within particles, not on the surface. • Remain stable for several years. • Packaged in a dropper bottle for easy dispensing and storage. <p>Concentration: 1×10^7 particles / mL</p> <p>Particle size: 3.2 (+/- 0.1) micron</p> <p>Particle material: polystyrene</p> <p>Uses: Long term performance tracking or routine calibration of flow cytometers. Routine alignment and calibration in fluorescence and confocal fluorescence microscopy.</p>

Product Application Details	
Applications	Flow Cytometry, Fluorescence Imaging
Recommended Dilutions	Flow Cytometry, Fluorescence Imaging
Application Notes	Shake vigorously or vortex briefly before use. Inclusion of a small amount of detergent in the diluent will help increase the number of singles. Diluted particles can be stored at 4C for future use.

Images

Rainbow Calibration Particle Set (6 peaks) [NBP3-00505] - Front scatter x side scatter population dot plot, as well as a PE Log x PE-TR Log scatter dot plot, with 6 gated populations. Based on those gates we see histograms with 6 peaks for FITC, PE, PE-Cy5, and PE-TR channels.





Novus Biologicals USA

10730 E. Briarwood Avenue
Centennial, CO 80112
USA
Phone: 303.730.1950
Toll Free: 1.888.506.6887
Fax: 303.730.1966
nb-customerservice@bio-techne.com

Bio-Techne Canada

21 Canmotor Ave
Toronto, ON M8Z 4E6
Canada
Phone: 905.827.6400
Toll Free: 855.668.8722
Fax: 905.827.6402
canada.inquires@bio-techne.com

Bio-Techne Ltd

19 Barton Lane
Abingdon Science Park
Abingdon, OX14 3NB, United Kingdom
Phone: (44) (0) 1235 529449
Free Phone: 0800 37 34 15
Fax: (44) (0) 1235 533420
info.EMEA@bio-techne.com

General Contact Information

www.novusbio.com
Technical Support: nb-technical@bio-techne.com
Orders: nb-customerservice@bio-techne.com
General: novus@novusbio.com

Limitations

This product is for research use only and is not approved for use in humans or in clinical diagnosis. Support products are guaranteed for 6 months from date of receipt.

For more information on our 100% guarantee, please visit www.novusbio.com/guarantee

Earn gift cards/discounts by submitting a review: www.novusbio.com/reviews/submit/NBP3-00505

Earn gift cards/discounts by submitting a publication using this product:
www.novusbio.com/publications

