

# Product Datasheet

## Rainbow Calibration Particle Set (8 peaks) NBP3-00504

Unit Size: 5 ml

Store at 4C in the dark. Do not freeze.

[www.novusbio.com](http://www.novusbio.com)



[technical@novusbio.com](mailto:technical@novusbio.com)

Protocols, Publications, Related Products, Reviews, Research Tools and Images at:  
[www.novusbio.com/NBP3-00504](http://www.novusbio.com/NBP3-00504)

Updated 10/11/2022 v.20.1

Earn rewards for product  
reviews and publications.

Submit a publication at [www.novusbio.com/publications](http://www.novusbio.com/publications)

Submit a review at [www.novusbio.com/reviews/destination/NBP3-00504](http://www.novusbio.com/reviews/destination/NBP3-00504)

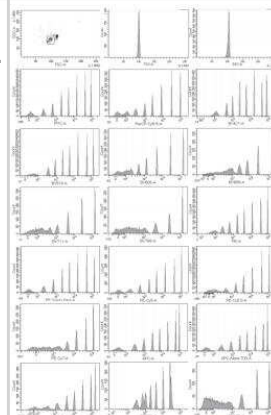


**NBP3-00504****Rainbow Calibration Particle Set (8 peaks)**

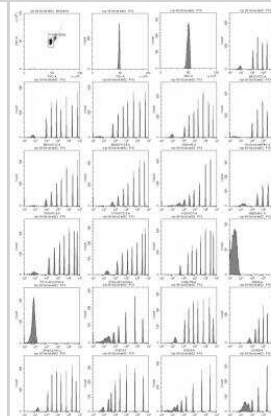
<b>Product Information</b>	
<b>Unit Size</b>	5 ml
<b>Concentration</b>	Please see the protocols for proper use of this product. If no protocol is available, contact technical services for assistance.
<b>Storage</b>	Store at 4C in the dark. Do not freeze.
<b>Preservative</b>	0.02% Sodium Azide
<b>Buffer</b>	Deionized water, 0.01% NP-40
<b>Product Description</b>	
<b>Description</b>	<p>Rainbow Calibration Particles are a mixture of fluorophore incorporated particles with 8 different fluorescent intensities that are used for calibrating flow cytometers:</p> <ul style="list-style-type: none"> <li>• Excite particles at any wavelength from 365 to 650 nm.</li> <li>• Calibrate multiple channels with the same set of particles.</li> <li>• Enable non-spectral matching to common fluorophores such as FITC, PE, PE-Cy5.</li> <li>• Deliver durable performance since fluorophores are encased within particles, not on the surface.</li> <li>• Remain stable for several years.</li> <li>• Packaged in a dropper bottle for easy dispensing and storage.</li> </ul> <p>Concentration: <math>10^7</math> particles / mL</p> <p>Particle size: 3.0 - 3.4 micron</p> <p>Particle material: polystyrene</p> <p>Uses: Long term performance tracking or routine calibration of flow cytometers. Routine alignment and calibration in fluorescence and confocal fluorescence microscopy.</p>
<b>Product Application Details</b>	
<b>Applications</b>	Flow Cytometry, Fluorescence Imaging
<b>Recommended Dilutions</b>	Flow Cytometry, Fluorescence Imaging
<b>Application Notes</b>	Use in routine calibration of flow cytometers. Dilution of 3 - 5 drops to 1 mL will provide adequate number of particles for flow cytometry. Shake vigorously or vortex briefly before use. Inclusion of a small amount of detergent in the diluent will help increase the number of singles. Diluted particles can be stored at 4C for future use.

## Images

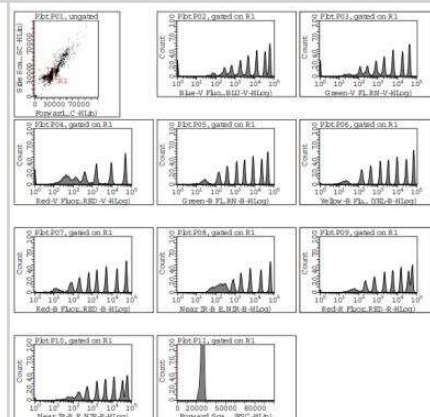
Rainbow Calibration Particle Set (8 peaks) [NBP3-00504] - Dot plot and histogram of NBP3-00504 from a BD Bioscience LSRFortessa(TM) X-20.



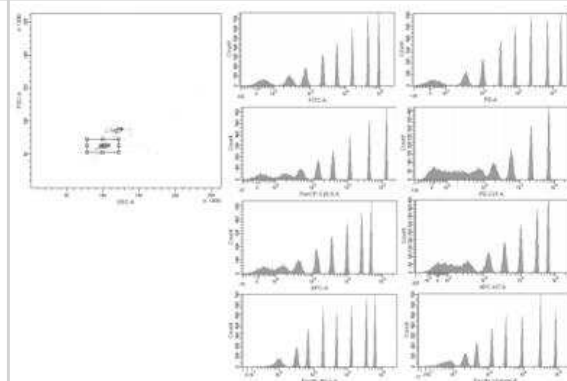
Rainbow Calibration Particle Set (8 peaks) [NBP3-00504] - Dot plot and histogram of NBP3-00504 from a Beckman Coulter CytoFLEX LX.



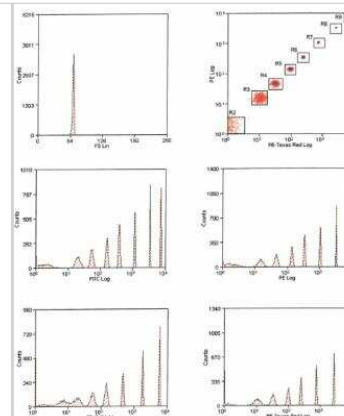
Rainbow Calibration Particle Set (8 peaks) [NBP3-00504] - Dot plot and histogram of NBP3-00504 from a Guava easyCyte 12.



Rainbow Calibration Particle Set (8 peaks) [NBP3-00504] - Dot plot and histograms of NBP3-00504 from a BD FACSanto(TM)II.



Rainbow Calibration Particle Set (8 peaks) [NBP3-00504] - Front scatter population histogram and PE Log x PE-TR Log scatter dot plot with 8 populations. Based on these gates, histograms show 8 peaks for FITC, PE, PE-Cy5 and PE-TR channels.





### **Novus Biologicals USA**

10730 E. Briarwood Avenue  
Centennial, CO 80112  
USA  
Phone: 303.730.1950  
Toll Free: 1.888.506.6887  
Fax: 303.730.1966  
nb-customerservice@bio-techne.com

### **Bio-Techne Canada**

21 Canmotor Ave  
Toronto, ON M8Z 4E6  
Canada  
Phone: 905.827.6400  
Toll Free: 855.668.8722  
Fax: 905.827.6402  
canada.inquires@bio-techne.com

### **Bio-Techne Ltd**

19 Barton Lane  
Abingdon Science Park  
Abingdon, OX14 3NB, United Kingdom  
Phone: (44) (0) 1235 529449  
Free Phone: 0800 37 34 15  
Fax: (44) (0) 1235 533420  
info.EMEA@bio-techne.com

### **General Contact Information**

www.novusbio.com  
Technical Support: nb-technical@bio-  
techne.com  
Orders: nb-customerservice@bio-techne.com  
General: novus@novusbio.com

### **Limitations**

This product is for research use only and is not approved for use in humans or in clinical diagnosis. Support products are guaranteed for 6 months from date of receipt.

For more information on our 100% guarantee, please visit [www.novusbio.com/guarantee](http://www.novusbio.com/guarantee)

Earn gift cards/discounts by submitting a review: [www.novusbio.com/reviews/submit/NBP3-00504](http://www.novusbio.com/reviews/submit/NBP3-00504)

Earn gift cards/discounts by submitting a publication using this product:  
[www.novusbio.com/publications](http://www.novusbio.com/publications)

