

# Product Datasheet

## EMAP-II/AIMP1 Antibody - Azide and BSA Free NBP2-99128-200ul

Unit Size: 200 ul

Store at 4C short term. Aliquot and store at -20C long term. Avoid freeze-thaw cycles.

[www.novusbio.com](http://www.novusbio.com)



[technical@novusbio.com](mailto:technical@novusbio.com)

Protocols, Publications, Related Products, Reviews, Research Tools and Images at:  
[www.novusbio.com/NBP2-99128](http://www.novusbio.com/NBP2-99128)

Updated 2/26/2025 v.20.1

Earn rewards for product  
reviews and publications.

Submit a publication at [www.novusbio.com/publications](http://www.novusbio.com/publications)

Submit a review at [www.novusbio.com/reviews/destination/NBP2-99128](http://www.novusbio.com/reviews/destination/NBP2-99128)



**NBP2-99128-200ul**

EMAP-II/AIMP1 Antibody - Azide and BSA Free

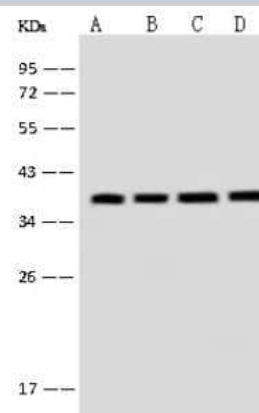
Product Information	
Unit Size	200 ul
Concentration	Please see the vial label for concentration. If unlisted please contact technical services.
Storage	Store at 4C short term. Aliquot and store at -20C long term. Avoid freeze-thaw cycles.
Clonality	Polyclonal
Preservative	No Preservative
Isotype	IgG
Purity	Antigen and protein A Affinity-purified
Buffer	0.2 um filtered solution in PBS

Product Description	
Description	This antibody can be stored at 2C to 8C for one month without detectable loss of activity. Antibody products are stable for twelve months from date of receipt when stored at -20C to -80C. Avoid repeated freeze-thaw cycles.
Host	Rabbit
Gene ID	9255
Gene Symbol	AIMP1
Species	Human
Immunogen	Produced in rabbits immunized with purified, recombinant Human EMAP-II/AIMP1 (Accession#: NP_004748.2; Ala2-Lys312)

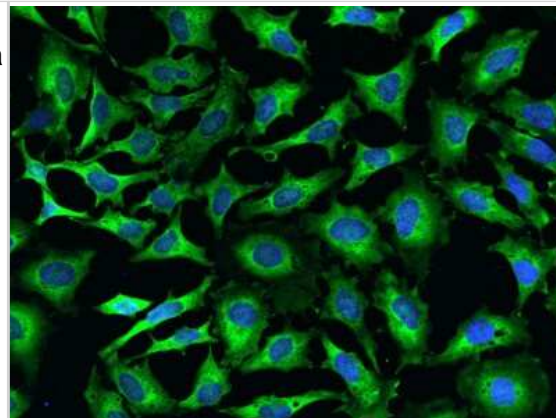
Product Application Details	
Applications	Western Blot, ELISA, Immunocytochemistry/ Immunofluorescence, Immunohistochemistry-Paraffin, Immunoprecipitation
Recommended Dilutions	Western Blot 1:500-1:2000, ELISA 1:5000-1:10000, Immunocytochemistry/ Immunofluorescence 1:200-1:1000, Immunoprecipitation 1-5uL/mg of lysate, Immunohistochemistry-Paraffin 1:1000-1:10000

**Images**

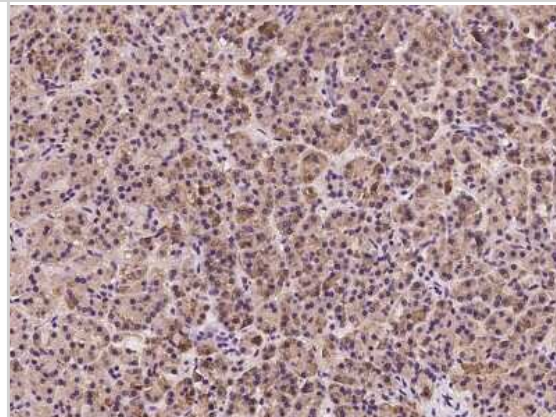
Western Blot: EMAP-II/AIMP1 Antibody [NBP2-99128] - Anti-EMAP-II/AIMP1 rabbit polyclonal antibody at 1:500 dilution. Lane A: H1299 Whole Cell Lysate. Lane B: HepG2 Whole Cell Lysate. Lane C: HEK293 Whole Cell Lysate. Lane D: Jurkat Whole Cell Lysate. Lysates/proteins at 30 ug per lane. Secondary Goat Anti-Rabbit IgG (H+L)/HRP at 1/10000 dilution. Developed using the ECL technique. Performed under reducing conditions. Predicted band size: 34 kDa. Observed band size: 38 kDa



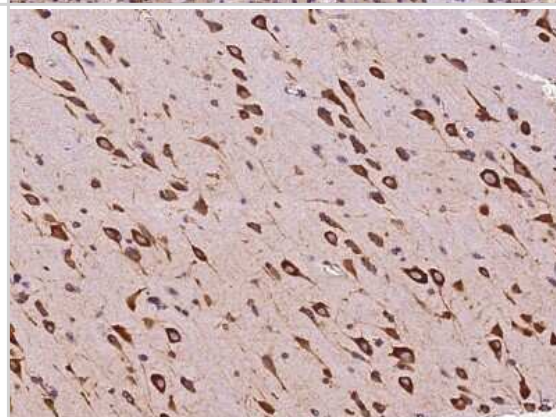
Immunocytochemistry/Immunofluorescence: EMAP-II/AIMP1 Antibody [NBP2-99128] - Immunofluorescence staining of EMAP-II/AIMP1 in HeLa cells. Cells were fixed with 4% PFA, permeabilized with 0.1% Triton X-100 in PBS, blocked with 10% serum, and incubated with rabbit anti-Human EMAP-II/AIMP1 polyclonal antibody (dilution ratio 1:500) at 4C overnight. Then cells were stained with the Alexa Fluor(R)488-conjugated Goat Anti-rabbit IgG Secondary antibody (green) and counterstained with DAPI (blue). Positive staining was localized to Cytoplasm.



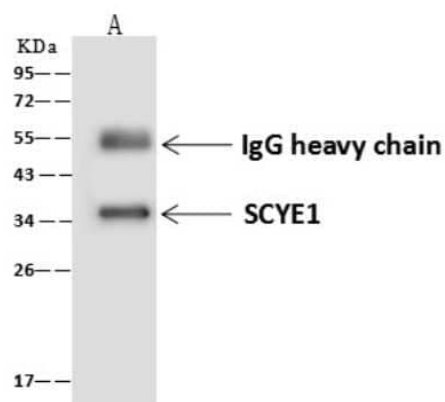
Immunohistochemistry-Paraffin: EMAP-II/AIMP1 Antibody [NBP2-99128] - Staining of human EMAP-II/AIMP1 in human pancreas with rabbit polyclonal antibody at 1:5000 dilution.



Immunohistochemistry-Paraffin: EMAP-II/AIMP1 Antibody [NBP2-99128] - Staining of human EMAP-II/AIMP1 in human brain with rabbit polyclonal antibody at 1:5000 dilution.



Immunoprecipitation: EMAP-II/AIMP1 Antibody [NBP2-99128] - EMAP-II/AIMP1 was immunoprecipitated using: Lane A: 0.5 mg HepG2 Whole Cell Lysate. 4 ul anti-EMAP-II/AIMP1 rabbit polyclonal antibody and 60 ug of Immunomagnetic beads. Protein A/G. Primary antibody: Anti-EMAP-II/AIMP1 rabbit polyclonal antibody, at 1:100 dilution. Secondary antibody: Goat Anti-Rabbit IgG (H+L)/HRP at 1/10000 dilution. Developed using the ECL technique. Performed under reducing conditions. Predicted band size: 35 kDa. Observed band size: 35 kDa





### **Novus Biologicals USA**

10730 E. Briarwood Avenue  
Centennial, CO 80112  
USA  
Phone: 303.730.1950  
Toll Free: 1.888.506.6887  
Fax: 303.730.1966  
nb-customerservice@bio-techne.com

### **Bio-Techne Canada**

21 Canmotor Ave  
Toronto, ON M8Z 4E6  
Canada  
Phone: 905.827.6400  
Toll Free: 855.668.8722  
Fax: 905.827.6402  
canada.inquires@bio-techne.com

### **Bio-Techne Ltd**

19 Barton Lane  
Abingdon Science Park  
Abingdon, OX14 3NB, United Kingdom  
Phone: (44) (0) 1235 529449  
Free Phone: 0800 37 34 15  
Fax: (44) (0) 1235 533420  
info.EMEA@bio-techne.com

### **General Contact Information**

www.novusbio.com  
Technical Support: nb-technical@bio-techne.com  
Orders: nb-customerservice@bio-techne.com  
General: novus@novusbio.com

### **Limitations**

This product is for research use only and is not approved for use in humans or in clinical diagnosis. Primary Antibodies are guaranteed for 1 year from date of receipt.

For more information on our 100% guarantee, please visit [www.novusbio.com/guarantee](http://www.novusbio.com/guarantee)

Earn gift cards/discounts by submitting a review: [www.novusbio.com/reviews/submit/NBP2-99128](http://www.novusbio.com/reviews/submit/NBP2-99128)

Earn gift cards/discounts by submitting a publication using this product:  
[www.novusbio.com/publications](http://www.novusbio.com/publications)

