

Product Datasheet

KIF1-binding protein Antibody - Azide and BSA Free NBP2-97110-100ul

Unit Size: 100 ul

Store at 4C short term. Aliquot and store at -20C long term. Avoid freeze-thaw cycles.

www.novusbio.com



technical@novusbio.com

Protocols, Publications, Related Products, Reviews, Research Tools and Images at:
www.novusbio.com/NBP2-97110

Updated 2/26/2025 v.20.1

Earn rewards for product
reviews and publications.

Submit a publication at www.novusbio.com/publications

Submit a review at www.novusbio.com/reviews/destination/NBP2-97110



NBP2-97110-100ul

KIF1-binding protein Antibody - Azide and BSA Free

| Product Information | |
|----------------------------|---|
| Unit Size | 100 ul |
| Concentration | Please see the vial label for concentration. If unlisted please contact technical services. |
| Storage | Store at 4C short term. Aliquot and store at -20C long term. Avoid freeze-thaw cycles. |
| Clonality | Polyclonal |
| Preservative | No Preservative |
| Isotype | IgG |
| Purity | Antigen and protein A Affinity-purified |
| Buffer | 0.2 um filtered solution in PBS |

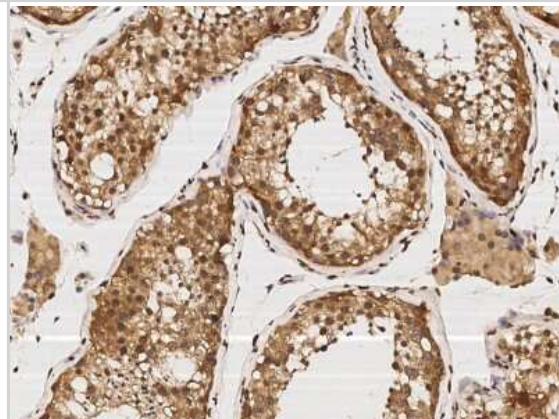
| Product Description | |
|----------------------------|--|
| Description | This antibody can be stored at 2C to 8C for one month without detectable loss of activity. Antibody products are stable for twelve months from date of receipt when stored at -20C to -80C. Avoid repeated freeze-thaw cycles. |
| Host | Rabbit |
| Gene ID | 26128 |
| Gene Symbol | KIFBP |
| Species | Human |
| Immunogen | Produced in rabbits immunized with purified, recombinant Human KIF1-binding protein (Uniprot#: Q96EK5; Met1-Thr621) |

| Product Application Details | |
|------------------------------------|---|
| Applications | ELISA, Immunohistochemistry-Paraffin |
| Recommended Dilutions | ELISA 1:5000-1:10000, Immunohistochemistry-Paraffin 1:1000-1:4000 |

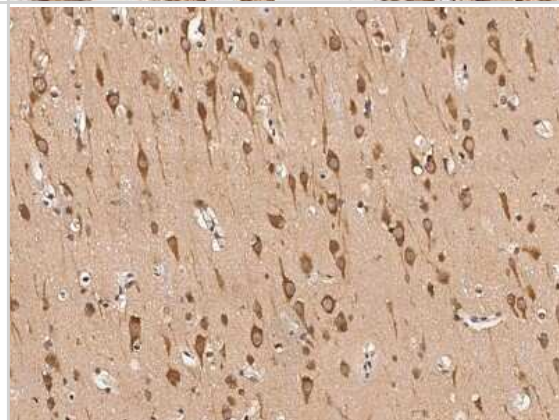


Images

Immunohistochemistry-Paraffin: KIF1-binding protein Antibody [NBP2-97110] - Immunochemical staining of human KIF1-binding protein in human testis with rabbit polyclonal antibody (1:2000, formalin-fixed paraffin embedded sections).



Immunohistochemistry-Paraffin: KIF1-binding protein Antibody [NBP2-97110] - Immunochemical staining of human KIF1-binding protein in human brain with rabbit polyclonal antibody (1:2000, formalin-fixed paraffin embedded sections).





Novus Biologicals USA

10730 E. Briarwood Avenue
Centennial, CO 80112
USA
Phone: 303.730.1950
Toll Free: 1.888.506.6887
Fax: 303.730.1966
nb-customerservice@bio-techne.com

Bio-Techne Canada

21 Canmotor Ave
Toronto, ON M8Z 4E6
Canada
Phone: 905.827.6400
Toll Free: 855.668.8722
Fax: 905.827.6402
canada.inquires@bio-techne.com

Bio-Techne Ltd

19 Barton Lane
Abingdon Science Park
Abingdon, OX14 3NB, United Kingdom
Phone: (44) (0) 1235 529449
Free Phone: 0800 37 34 15
Fax: (44) (0) 1235 533420
info.EMEA@bio-techne.com

General Contact Information

www.novusbio.com
Technical Support: nb-technical@bio-techne.com
Orders: nb-customerservice@bio-techne.com
General: novus@novusbio.com

Products Related to NBP2-97110-100ul

| | |
|--------------------|---|
| HAF008 | Goat anti-Rabbit IgG Secondary Antibody [HRP] |
| NB7160 | Goat anti-Rabbit IgG (H+L) Secondary Antibody [HRP] |
| NBP2-24891 | Rabbit IgG Isotype Control |
| H00026128-P01-10ug | Recombinant Human KIF1-binding protein GST (N-Term) Protein |

Limitations

This product is for research use only and is not approved for use in humans or in clinical diagnosis. Primary Antibodies are guaranteed for 1 year from date of receipt.

For more information on our 100% guarantee, please visit www.novusbio.com/guarantee

Earn gift cards/discounts by submitting a review: www.novusbio.com/reviews/submit/NBP2-97110

Earn gift cards/discounts by submitting a publication using this product:
www.novusbio.com/publications

