

# Product Datasheet

## Pyruvate Dehydrogenase E1-alpha subunit Antibody NBP2-95269

Unit Size: 50 uL

Store at -20C. Avoid freeze-thaw cycles.

[www.novusbio.com](http://www.novusbio.com)



[technical@novusbio.com](mailto:technical@novusbio.com)

Protocols, Publications, Related Products, Reviews, Research Tools and Images at:  
[www.novusbio.com/NBP2-95269](http://www.novusbio.com/NBP2-95269)

Updated 12/11/2024 v.20.1

Earn rewards for product  
reviews and publications.

Submit a publication at [www.novusbio.com/publications](http://www.novusbio.com/publications)

Submit a review at [www.novusbio.com/reviews/destination/NBP2-95269](http://www.novusbio.com/reviews/destination/NBP2-95269)



**NBP2-95269**

## Pyruvate Dehydrogenase E1-alpha subunit Antibody

Product Information	
Unit Size	50 uL
Concentration	Please see the vial label for concentration. If unlisted please contact technical services.
Storage	Store at -20C. Avoid freeze-thaw cycles.
Clonality	Polyclonal
Preservative	0.05% Proclin 300
Isotype	IgG
Purity	IgG purified
Buffer	PBS

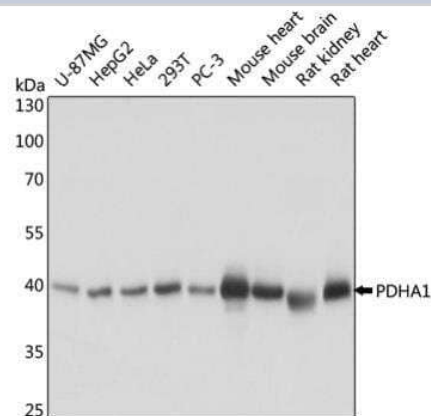
Product Description	
Host	Rabbit
Gene ID	5160
Gene Symbol	PDHA1
Species	Human
Reactivity Notes	Predicted cross-reactivities: Mouse, Rat
Immunogen	Recombinant protein of human PDHA1

Product Application Details	
Applications	Western Blot, Immunohistochemistry, Immunohistochemistry-Paraffin
Recommended Dilutions	Western Blot 1:500 - 1:2000, Immunohistochemistry, Immunohistochemistry-Paraffin 1:50 - 1:200

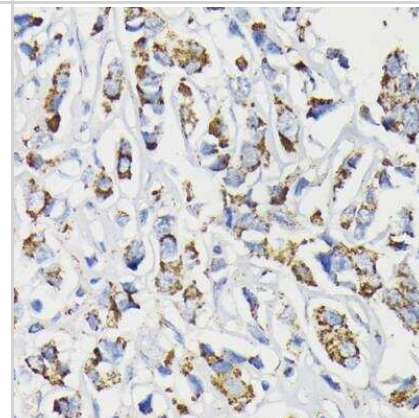


## Images

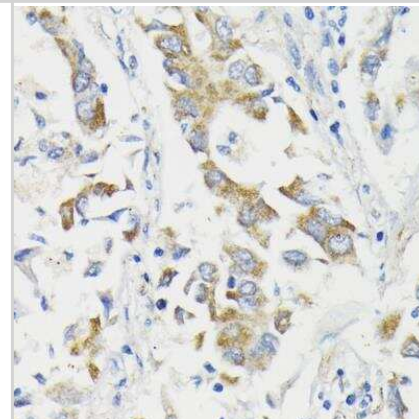
Western Blot: PDHA2 Antibody [NBP2-95269] - Western blot analysis was performed by loading 25 ug of various whole cell lysates probed with Rabbit anti PDHA1 (NBP2-95269) at 1:1000 dilution. Arrow points to PDHA1 (molecular weight 43 kDa).



Immunohistochemistry-Paraffin: PDHA2 Antibody [NBP2-95269] - Immunohistochemistry microscopy image of paraffin embedded human mammary cancer stained with Rabbit anti PDHA1 (NBP2-95269) at 1:200 dilution.



Immunohistochemistry-Paraffin: PDHA2 Antibody [NBP2-95269] - Immunohistochemistry microscopy image of paraffin embedded human lung cancer stained with Rabbit anti PDHA1 (NBP2-95269) at 1:200 dilution.





### **Novus Biologicals USA**

10730 E. Briarwood Avenue  
Centennial, CO 80112  
USA  
Phone: 303.730.1950  
Toll Free: 1.888.506.6887  
Fax: 303.730.1966  
nb-customerservice@bio-techne.com

### **Bio-Techne Canada**

21 Canmotor Ave  
Toronto, ON M8Z 4E6  
Canada  
Phone: 905.827.6400  
Toll Free: 855.668.8722  
Fax: 905.827.6402  
canada.inquires@bio-techne.com

### **Bio-Techne Ltd**

19 Barton Lane  
Abingdon Science Park  
Abingdon, OX14 3NB, United Kingdom  
Phone: (44) (0) 1235 529449  
Free Phone: 0800 37 34 15  
Fax: (44) (0) 1235 533420  
info.EMEA@bio-techne.com

### **General Contact Information**

www.novusbio.com  
Technical Support: nb-technical@bio-techne.com  
Orders: nb-customerservice@bio-techne.com  
General: novus@novusbio.com

### **Limitations**

This product is for research use only and is not approved for use in humans or in clinical diagnosis. Primary Antibodies are guaranteed for 1 year from date of receipt.

For more information on our 100% guarantee, please visit [www.novusbio.com/guarantee](http://www.novusbio.com/guarantee)

Earn gift cards/discounts by submitting a review: [www.novusbio.com/reviews/submit/NBP2-95269](http://www.novusbio.com/reviews/submit/NBP2-95269)

Earn gift cards/discounts by submitting a publication using this product:  
[www.novusbio.com/publications](http://www.novusbio.com/publications)

