

Product Datasheet

IRE1 alpha Antibody - Azide and BSA Free NBP2-95252-0.1ml

Unit Size: 0.1 ml

Store at -20C. Avoid freeze-thaw cycles.

www.novusbio.com



technical@novusbio.com

Protocols, Publications, Related Products, Reviews, Research Tools and Images at:
www.novusbio.com/NBP2-95252

Updated 7/31/2024 v.20.1

Earn rewards for product
reviews and publications.

Submit a publication at www.novusbio.com/publications

Submit a review at www.novusbio.com/reviews/destination/NBP2-95252



NBP2-95252-0.1ml

IRE1 alpha Antibody - Azide and BSA Free

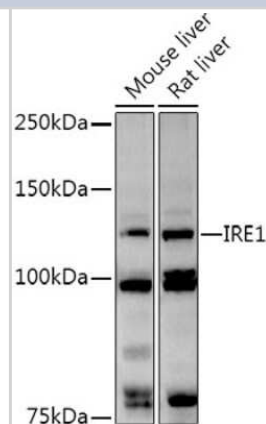
Product Information	
Unit Size	0.1 ml
Concentration	Please see the vial label for concentration. If unlisted please contact technical services.
Storage	Store at -20C. Avoid freeze-thaw cycles.
Clonality	Polyclonal
Preservative	0.05% Proclin 300
Isotype	IgG
Purity	Affinity purified
Buffer	PBS (pH 7.3), 50% glycerol
Target Molecular Weight	110 kDa

Product Description	
Host	Rabbit
Gene ID	2081
Gene Symbol	ERN1
Species	Human, Mouse, Rat
Immunogen	Recombinant fusion protein containing a sequence corresponding to amino acids 286-435 of human IRE1 alpha (NP_001424.3). VGKYSTSLYASPSMVHEGVAVVPRGSTLPLLEGPQTDGVTIGDKGECVITPST DVKFDPGLKSKNKLNYLRNYWLLIGHHETPLSASTKMLERFPNNLPKHRENVIP ADSEKKSFEVINLVDQTSNAPTTVSRDVEEKPAHAPARPEA

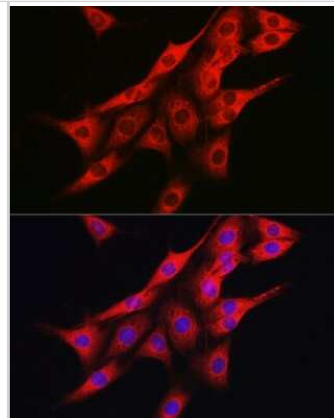
Product Application Details	
Applications	Western Blot, Immunocytochemistry/ Immunofluorescence, Immunohistochemistry, Immunohistochemistry-Paraffin
Recommended Dilutions	Western Blot 1:500 - 1:1000, Immunohistochemistry 1:50 - 1:200, Immunocytochemistry/ Immunofluorescence 1:50 - 1:200, Immunohistochemistry-Paraffin

Images

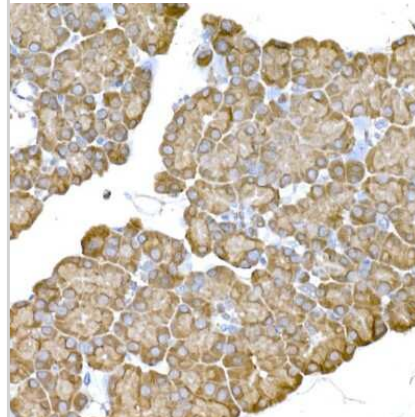
Western Blot: IRE1 alpha Antibody [NBP2-95252] - Analysis of extracts of various cell lines, using IRE1 alpha antibody (NBP2-95252) at 1:1000 dilution. Secondary antibody: HRP Goat Anti-Rabbit IgG (H+L) at 1:10000 dilution. Lysates/proteins: 25ug per lane. Blocking buffer: 3% nonfat dry milk in TBST. Detection: ECL Basic Kit. Exposure time: 90s.



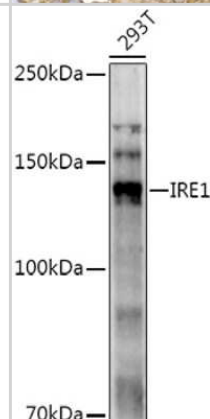
Immunocytochemistry/Immunofluorescence: IRE1 alpha Antibody [NBP2-95252] - Immunofluorescence analysis of PC-12 cells using IRE1 alpha Rabbit pAb (NBP2-95252) at dilution of 1:100 (40x lens). Blue: DAPI for nuclear staining.



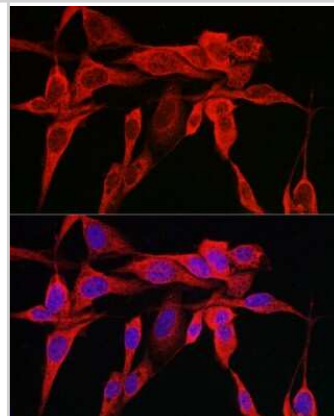
Immunohistochemistry-Paraffin: IRE1 alpha Antibody [NBP2-95252] - Rat pancreas using IRE1 alpha Rabbit pAb (NBP2-95252) at dilution of 1:100 (40x lens). Perform high pressure antigen retrieval with 10 mM citrate buffer pH 6.0 before commencing with IHC staining protocol.



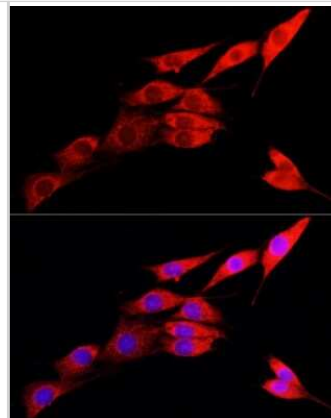
Western Blot: IRE1 alpha Antibody [NBP2-95252] - Analysis of extracts of 293T cells, using IRE1 alpha antibody (NBP2-95252) at 1:1000 dilution. Secondary antibody: HRP Goat Anti-Rabbit IgG (H+L) at 1:10000 dilution. Lysates/proteins: 25ug per lane. Blocking buffer: 3% nonfat dry milk in TBST. Detection: ECL Enhanced Kit. Exposure time: 120s.



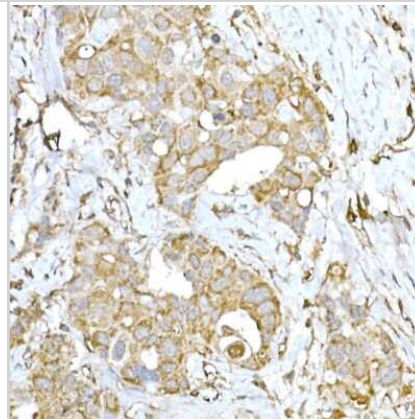
Immunocytochemistry/Immunofluorescence: IRE1 alpha Antibody [NBP2-95252] - Immunofluorescence analysis of U2OS cells using IRE1 alpha Rabbit pAb (NBP2-95252) at dilution of 1:150 (40x lens). Blue: DAPI for nuclear staining.



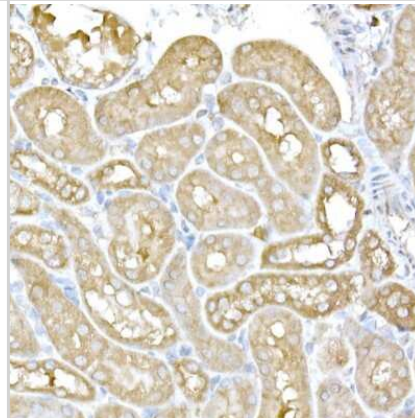
Immunocytochemistry/Immunofluorescence: IRE1 alpha Antibody [NBP2-95252] - Immunofluorescence analysis of NIH/3T3 cells using IRE1 alpha Rabbit pAb (NBP2-95252) at dilution of 1:100 (40x lens). Blue: DAPI for nuclear staining.



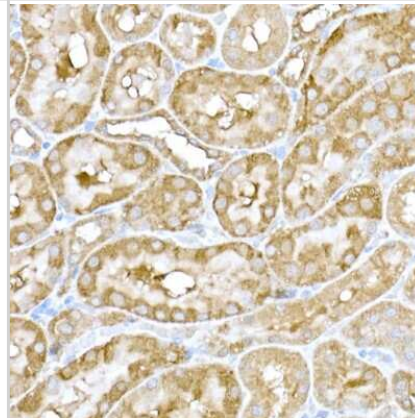
Immunohistochemistry-Paraffin: IRE1 alpha Antibody [NBP2-95252] - Human breast cancer using IRE1 alpha Rabbit pAb (NBP2-95252) at dilution of 1:100 (40x lens). Perform high pressure antigen retrieval with 10 mM citrate buffer pH 6.0 before commencing with IHC staining protocol.



Immunohistochemistry-Paraffin: IRE1 alpha Antibody [NBP2-95252] - Mouse kidney using IRE1 alpha Rabbit pAb (NBP2-95252) at dilution of 1:100 (40x lens). Perform high pressure antigen retrieval with 10 mM citrate buffer pH 6.0 before commencing with IHC staining protocol.



Immunohistochemistry-Paraffin: IRE1 alpha Antibody [NBP2-95252] - Rat kidney using IRE1 alpha Rabbit pAb (NBP2-95252) at dilution of 1:100 (40x lens). Perform high pressure antigen retrieval with 10 mM citrate buffer pH 6.0 before commencing with IHC staining protocol.





Novus Biologicals USA

10730 E. Briarwood Avenue
Centennial, CO 80112
USA
Phone: 303.730.1950
Toll Free: 1.888.506.6887
Fax: 303.730.1966
nb-customerservice@bio-techne.com

Bio-Techne Canada

21 Canmotor Ave
Toronto, ON M8Z 4E6
Canada
Phone: 905.827.6400
Toll Free: 855.668.8722
Fax: 905.827.6402
canada.inquires@bio-techne.com

Bio-Techne Ltd

19 Barton Lane
Abingdon Science Park
Abingdon, OX14 3NB, United Kingdom
Phone: (44) (0) 1235 529449
Free Phone: 0800 37 34 15
Fax: (44) (0) 1235 533420
info.EMEA@bio-techne.com

General Contact Information

www.novusbio.com
Technical Support: nb-technical@bio-techne.com
Orders: nb-customerservice@bio-techne.com
General: novus@novusbio.com

Products Related to NBP2-95252-0.1ml

HAF008	Goat anti-Rabbit IgG Secondary Antibody [HRP]
NB7160	Goat anti-Rabbit IgG (H+L) Secondary Antibody [HRP]
NBP2-24891	Rabbit IgG Isotype Control
NB100-2323PEP	IRE1 alpha [p Ser724] Antibody Blocking Peptide

Limitations

This product is for research use only and is not approved for use in humans or in clinical diagnosis. Primary Antibodies are guaranteed for 1 year from date of receipt.

For more information on our 100% guarantee, please visit www.novusbio.com/guarantee

Earn gift cards/discounts by submitting a review: www.novusbio.com/reviews/submit/NBP2-95252

Earn gift cards/discounts by submitting a publication using this product:
www.novusbio.com/publications

