

Product Datasheet

Motilin Antibody - BSA Free NBP2-93868-0.1ml

Unit Size: 0.1 ml

Store at -20C. Avoid freeze-thaw cycles.

www.novusbio.com



technical@novusbio.com

Publications: 1

Protocols, Publications, Related Products, Reviews, Research Tools and Images at:
www.novusbio.com/NBP2-93868

Updated 9/9/2025 v.20.1

Earn rewards for product
reviews and publications.

Submit a publication at www.novusbio.com/publications

Submit a review at www.novusbio.com/reviews/destination/NBP2-93868



NBP2-93868-0.1ml

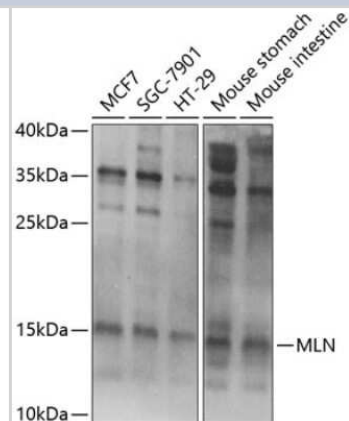
Motilin Antibody - BSA Free

Product Information	
Unit Size	0.1 ml
Concentration	Please see the vial label for concentration. If unlisted please contact technical services.
Storage	Store at -20C. Avoid freeze-thaw cycles.
Clonality	Polyclonal
Preservative	0.02% Sodium Azide
Isotype	IgG
Purity	Affinity purified
Buffer	PBS (pH 7.3), 50% glycerol
Target Molecular Weight	12 kDa
Product Description	
Description	Novus Biologicals Rabbit Motilin Antibody - BSA Free (NBP2-93868) is a polyclonal antibody validated for use in IHC and WB. Anti-Motilin Antibody: Cited in 1 publication. All Novus Biologicals antibodies are covered by our 100% guarantee.
Host	Rabbit
Gene ID	4295
Gene Symbol	MLN
Species	Human, Mouse
Immunogen	Recombinant fusion protein containing a sequence corresponding to amino acids 26-115 of human MLN (NP_002409.1). FVPIFTYGELQRMQEKERNKGQKKSLSVWQRSGEEGPVDPAEPIREEENEMIK LTAPLEIGMRMNSRQLEKYPATLEGLLSEMLPQHAAK
Product Application Details	
Applications	Western Blot, Immunohistochemistry-Paraffin, Immunohistochemistry
Recommended Dilutions	Western Blot 1:500 - 1:2000, Immunohistochemistry 1:50 - 1:100, Immunohistochemistry-Paraffin

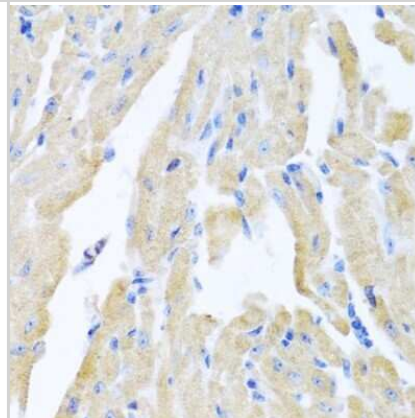


Images

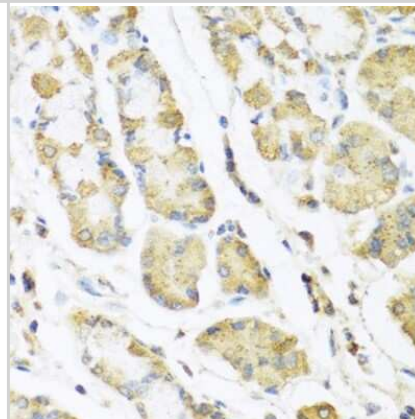
Western Blot: Motilin Antibody [NBP2-93868] - Analysis of extracts of various cell lines, using Motilin at 1:1000 dilution. Secondary antibody: HRP Goat Anti-Rabbit IgG (H+L) at 1:10000 dilution. Lysates/proteins: 25ug per lane. Blocking buffer: 3% nonfat dry milk in TBST. Detection: ECL Basic Kit .Exposure time: 1s.



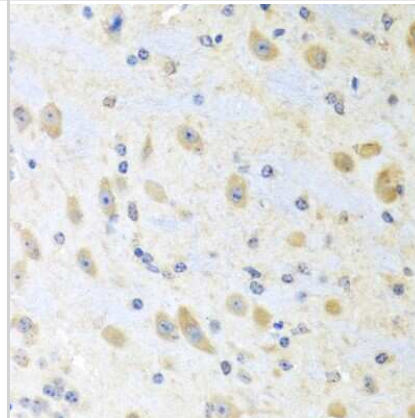
Immunohistochemistry-Paraffin: Motilin Antibody [NBP2-93868] - Paraffin-embedded mouse heart using Motilin .



Immunohistochemistry-Paraffin: Motilin Antibody [NBP2-93868] - Paraffin-embedded human stomach using Motilin .



Immunohistochemistry-Paraffin: Motilin Antibody [NBP2-93868] - Paraffin-embedded mouse brain using Motilin .



Publications

Zhang Y, Zhao J, Hu N et al. Motilin and its receptor are expressed in the dorsal horn in a rat model of acute incisional pain: Intrathecal motilin injection alleviates pain behaviors *Frontiers in neuroscience* 2023-02-02 [PMID: 36816129] (WB, Rat)



Novus Biologicals USA

10730 E. Briarwood Avenue
Centennial, CO 80112
USA

Phone: 303.730.1950

Toll Free: 1.888.506.6887

Fax: 303.730.1966

nb-customerservice@bio-techne.com

Bio-Techne Canada

21 Canmotor Ave
Toronto, ON M8Z 4E6
Canada

Phone: 905.827.6400

Toll Free: 855.668.8722

Fax: 905.827.6402

canada.inquires@bio-techne.com

Bio-Techne Ltd

19 Barton Lane
Abingdon Science Park
Abingdon, OX14 3NB, United Kingdom

Phone: (44) (0) 1235 529449

Free Phone: 0800 37 34 15

Fax: (44) (0) 1235 533420

info.EMEA@bio-techne.com

General Contact Information

www.novusbio.com

Technical Support: nb-technical@bio-techne.com

Orders: nb-customerservice@bio-techne.com

General: novus@novusbio.com

Products Related to NBP2-93868-0.1ml

NBP2-33376H	Blue Marker Antibody (6F4-F6) [HRP]
HAF008	Goat anti-Rabbit IgG Secondary Antibody [HRP]
NB7160	Goat anti-Rabbit IgG (H+L) Secondary Antibody [HRP]
NBP2-24891	Rabbit IgG Isotype Control

Limitations

This product is for research use only and is not approved for use in humans or in clinical diagnosis. Primary Antibodies are guaranteed for 1 year from date of receipt.

For more information on our 100% guarantee, please visit www.novusbio.com/guarantee

Earn gift cards/discounts by submitting a review: www.novusbio.com/reviews/submit/NBP2-93868

Earn gift cards/discounts by submitting a publication using this product:

www.novusbio.com/publications

