

# Product Datasheet

## SEL1L Antibody - Azide and BSA Free NBP2-93746-0.1ml

Unit Size: 0.1 ml

Store at -20C. Avoid freeze-thaw cycles.

[www.novusbio.com](http://www.novusbio.com)



[technical@novusbio.com](mailto:technical@novusbio.com)

### Publications: 1

Protocols, Publications, Related Products, Reviews, Research Tools and Images at:  
[www.novusbio.com/NBP2-93746](http://www.novusbio.com/NBP2-93746)

Updated 1/5/2025 v.20.1

Earn rewards for product  
reviews and publications.

Submit a publication at [www.novusbio.com/publications](http://www.novusbio.com/publications)

Submit a review at [www.novusbio.com/reviews/destination/NBP2-93746](http://www.novusbio.com/reviews/destination/NBP2-93746)



**NBP2-93746-0.1ml**

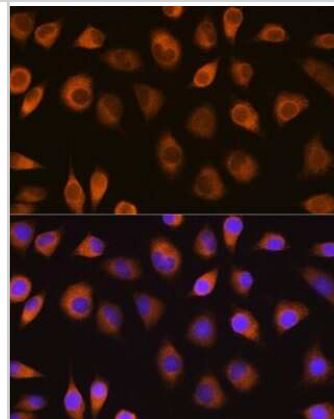
SEL1L Antibody - Azide and BSA Free

| Product Information         |   |
|-----------------------------|---|
| Unit Size                   | 0.1 ml  |
| Concentration               | Please see the vial label for concentration. If unlisted please contact technical services.   |
| Storage                     | Store at -20C. Avoid freeze-thaw cycles.  |
| Clonality                   | Polyclonal  |
| Preservative                | 0.09% Sodium Azide  |
| Isotype                     | IgG   |
| Purity                      | Affinity purified   |
| Buffer                      | PBS (pH 7.3), 50% glycerol  |
| Target Molecular Weight     | 89 kDa  |
| Product Description         |   |
| Host                        | Rabbit  |
| Gene ID                     | 6400  |
| Gene Symbol                 | SEL1L   |
| Species                     | Human, Mouse, Rat   |
| Immunogen                   | Recombinant fusion protein containing a sequence corresponding to amino acids 22-190 of human SEL1L (NP_005056.3).<br>SSDEEGSQDESLSKTTLTSDSVKDHTTAGRVVAGQIFLDSEEESELESSIQEE<br>EDSLKSQEGESVTEDISFLESPNPENKDYEPPKKVRKPALTAIEGTAHGEPCHF<br>PFLFLDKEYDECTSDGREDGRLWCATTYDYKADEKKGFCETEEEAARRQM<br>QEAEMMYQTG |
| Product Application Details |   |
| Applications                | Western Blot, ELISA, Immunocytochemistry/ Immunofluorescence  |
| Recommended Dilutions       | Western Blot 1:500-1:2000, ELISA, Immunocytochemistry/ Immunofluorescence 1:50-1:200  |

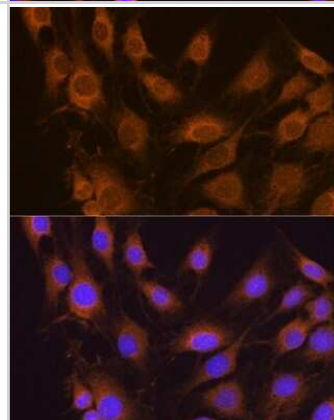


## Images

Immunocytochemistry/Immunofluorescence: SEL1L Antibody [NBP2-93746] - Analysis of L929 cells using SEL1L at dilution of 1:100. Blue: DAPI for nuclear staining.



Immunocytochemistry/Immunofluorescence: SEL1L Antibody [NBP2-93746] - Analysis of C6 cells using SEL1L at dilution of 1:100. Blue: DAPI for nuclear staining.



Western Blot: SEL1L Antibody - Azide and BSA Free [SEL1L] - Western blot analysis of various lysates, using SEL1L Rabbit pAb at 1:1000 dilution.

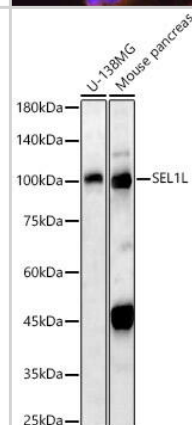
Secondary antibody: HRP-conjugated Goat anti-Rabbit IgG (H+L) at 1:10000 dilution.

Lysates/proteins: 25ug per lane.

Blocking buffer: 3% nonfat dry milk in TBST.

Detection: ECL Basic Kit .

Exposure time: 180s.



## Publications

Sarah Poliquin, Gerald Nwosu, Karishma Randhave, Wangzhen Shen, Carson Flamm, Jing-Qiong Kang, Henry Hing Cheong Lee Modulating Endoplasmic Reticulum Chaperones and Mutant Protein Degradation in GABRG2(Q390X) Associated with Genetic Epilepsy with Febrile Seizures Plus and Dravet Syndrome International Journal of Molecular Sciences 2024-04-23 [PMID: 38731820]



### **Novus Biologicals USA**

10730 E. Briarwood Avenue  
Centennial, CO 80112  
USA  
Phone: 303.730.1950  
Toll Free: 1.888.506.6887  
Fax: 303.730.1966  
nb-customerservice@bio-techne.com

### **Bio-Techne Canada**

21 Canmotor Ave  
Toronto, ON M8Z 4E6  
Canada  
Phone: 905.827.6400  
Toll Free: 855.668.8722  
Fax: 905.827.6402  
canada.inquires@bio-techne.com

### **Bio-Techne Ltd**

19 Barton Lane  
Abingdon Science Park  
Abingdon, OX14 3NB, United Kingdom  
Phone: (44) (0) 1235 529449  
Free Phone: 0800 37 34 15  
Fax: (44) (0) 1235 533420  
info.EMEA@bio-techne.com

### **General Contact Information**

www.novusbio.com  
Technical Support: nb-technical@bio-  
techne.com  
Orders: nb-customerservice@bio-techne.com  
General: novus@novusbio.com

### **Products Related to NBP2-93746-0.1ml**

---

|               |   |
|---------------|---|
| HAF008        | Goat anti-Rabbit IgG Secondary Antibody [HRP]       |
| NB7160        | Goat anti-Rabbit IgG (H+L) Secondary Antibody [HRP] |
| NBP2-24891    | Rabbit IgG Isotype Control                          |
| NBP1-81623PEP | SEL1L Recombinant Protein Antigen                   |

---

### **Limitations**

This product is for research use only and is not approved for use in humans or in clinical diagnosis. Primary Antibodies are guaranteed for 1 year from date of receipt.

For more information on our 100% guarantee, please visit [www.novusbio.com/guarantee](http://www.novusbio.com/guarantee)

Earn gift cards/discounts by submitting a review: [www.novusbio.com/reviews/submit/NBP2-93746](http://www.novusbio.com/reviews/submit/NBP2-93746)

Earn gift cards/discounts by submitting a publication using this product:  
[www.novusbio.com/publications](http://www.novusbio.com/publications)

