

Product Datasheet

PEPT1/SLC15A1 Antibody - BSA Free NBP2-93362-0.1ml

Unit Size: 0.1 ml

Store at -20C. Avoid freeze-thaw cycles.

www.novusbio.com



technical@novusbio.com

Protocols, Publications, Related Products, Reviews, Research Tools and Images at:
www.novusbio.com/NBP2-93362

Updated 4/30/2025 v.20.1

Earn rewards for product
reviews and publications.

Submit a publication at www.novusbio.com/publications

Submit a review at www.novusbio.com/reviews/destination/NBP2-93362



NBP2-93362-0.1ml

PEPT1/SLC15A1 Antibody - BSA Free

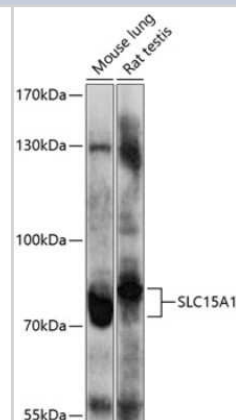
Product Information	
Unit Size	0.1 ml
Concentration	Please see the vial label for concentration. If unlisted please contact technical services.
Storage	Store at -20C. Avoid freeze-thaw cycles.
Clonality	Polyclonal
Preservative	0.02% Sodium Azide
Isotype	IgG
Purity	Affinity purified
Buffer	PBS (pH 7.3), 50% glycerol
Target Molecular Weight	78 kDa

Product Description	
Host	Rabbit
Gene ID	6564
Gene Symbol	SLC15A1
Species	Mouse, Rat
Immunogen	A synthetic peptide corresponding to a sequence within amino acids 600-700 of human SLC15A1 (NP_005064.1). VTGLEFSYSQAPSNMKSVLQAGWLLTVAVGNIIVLIVAGAGQFSKQWAEYILFA ALLLVVCVIFAIMARFYTYINPAEIEAQFDEDEKKNRLEKSNPYFMS

Product Application Details	
Applications	Western Blot
Recommended Dilutions	Western Blot 1:500-1:2000

Images

Western Blot: PEPT1/SLC15A1 Antibody [NBP2-93362] - Analysis of extracts of various cell lines, using PEPT1/SLC15A1 . Exposure time: 90s.





Novus Biologicals USA

10730 E. Briarwood Avenue
Centennial, CO 80112
USA
Phone: 303.730.1950
Toll Free: 1.888.506.6887
Fax: 303.730.1966
nb-customerservice@bio-techne.com

Bio-Techne Canada

21 Canmotor Ave
Toronto, ON M8Z 4E6
Canada
Phone: 905.827.6400
Toll Free: 855.668.8722
Fax: 905.827.6402
canada.inquires@bio-techne.com

Bio-Techne Ltd

19 Barton Lane
Abingdon Science Park
Abingdon, OX14 3NB, United Kingdom
Phone: (44) (0) 1235 529449
Free Phone: 0800 37 34 15
Fax: (44) (0) 1235 533420
info.EMEA@bio-techne.com

General Contact Information

www.novusbio.com
Technical Support: nb-technical@bio-
techne.com
Orders: nb-customerservice@bio-techne.com
General: novus@novusbio.com

Limitations

This product is for research use only and is not approved for use in humans or in clinical diagnosis. Primary Antibodies are guaranteed for 1 year from date of receipt.

For more information on our 100% guarantee, please visit www.novusbio.com/guarantee

Earn gift cards/discounts by submitting a review: www.novusbio.com/reviews/submit/NBP2-93362

Earn gift cards/discounts by submitting a publication using this product:
www.novusbio.com/publications

