

Product Datasheet

LAMP-1/CD107a Antibody (107) - Azide and BSA Free NBP2-89844-100ul

Unit Size: 100 ul

Store at 4C short term. Aliquot and store at -20C long term. Avoid freeze-thaw cycles.

www.novusbio.com



technical@novusbio.com

Publications: 1

Protocols, Publications, Related Products, Reviews, Research Tools and Images at:
www.novusbio.com/NBP2-89844

Updated 2/26/2025 v.20.1

Earn rewards for product
reviews and publications.

Submit a publication at www.novusbio.com/publications

Submit a review at www.novusbio.com/reviews/destination/NBP2-89844



NBP2-89844-100ul

LAMP-1/CD107a Antibody (107) - Azide and BSA Free

Product Information

Unit Size	100 ul
Concentration	Please see the vial label for concentration. If unlisted please contact technical services.
Storage	Store at 4C short term. Aliquot and store at -20C long term. Avoid freeze-thaw cycles.
Clonality	Monoclonal
Clone	107
Preservative	No Preservative
Isotype	IgG
Purity	Protein A purified
Buffer	0.2 um filtered solution in PBS

Product Description

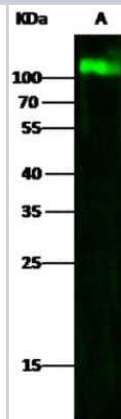
Description	This antibody can be stored at 2C-8C for one month without detectable loss of activity. Antibody products are stable for twelve months from date of receipt when stored at -20C to -80C. Avoid repeated freeze-thaw cycles.
Host	Rabbit
Gene ID	3916
Gene Symbol	LAMP1
Species	Human
Immunogen	This antibody was obtained from a rabbit immunized with purified, recombinant Human LAMP-1/CD107a (Accession#: NP_005552.3; Met 1-Met 382).

Product Application Details

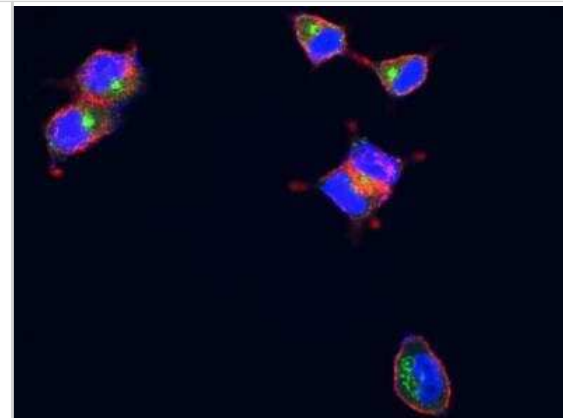
Applications	ELISA, Flow Cytometry, Immunocytochemistry/ Immunofluorescence, Immunohistochemistry-Paraffin, Immunoprecipitation
Recommended Dilutions	Flow Cytometry 1:20-1:100, ELISA 1:5000-1:10000, Immunocytochemistry/ Immunofluorescence 1:20-1:100, Immunoprecipitation 0.2-1 uL/mg of lysate, Immunohistochemistry-Paraffin 1:100-1:500

Images

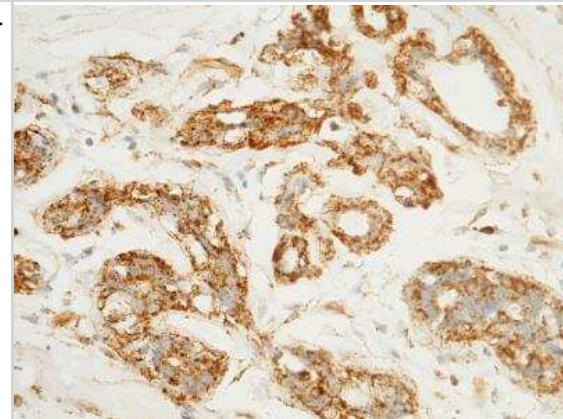
Western Blot: LAMP-1/CD107a Antibody (107) [NBP2-89844] - Lane A: Jurkat Whole Cell Lysate Lysates/proteins at 30 ug per lane. Secondary Goat Anti-Rabbit IgG H&L (Dylight800) at 1/10000 dilution. Developed using the Odyssey technique. Performed under reducing conditions. Predicted band size:120 kDa Observed band size:120 kDa



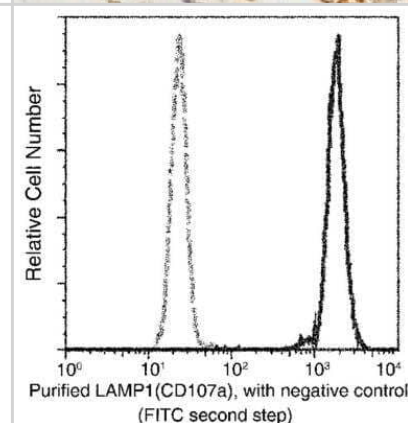
Immunocytochemistry/Immunofluorescence: LAMP-1/CD107a Antibody (107) [NBP2-89844] - Analysis of Human LAMP1 in MCF7 cells. Cells were fixed with 4% PFA, permeabilized with 1% Triton X-100 in PBS, blocked with 10% serum, and incubated with Rabbit anti-Human LAMP1 monoclonal antibody (1:300). Then cells were stained with the Alexa Fluor® 488-conjugated Goat Anti-rabbit IgG secondary antibody, countstained with Alexa Fluor(R) 546-conjugated phallotoxins (red) and DAPI (blue). Positive staining was localized to lysosome membrane.



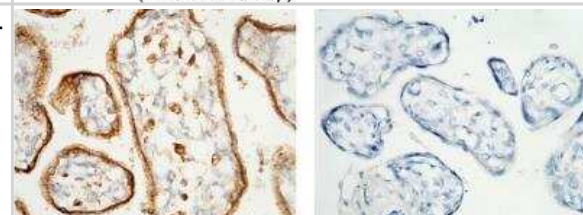
Immunohistochemistry-Paraffin: LAMP-1/CD107a Antibody (107) [NBP2-89844] - Staining of human LAMP1 in human breast carcinoma with rabbit monoclonal antibody (1:1000).



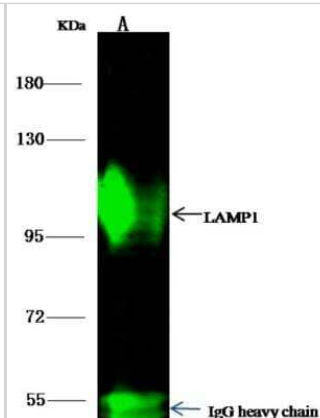
Flow Cytometry: LAMP-1/CD107a Antibody (107) [NBP2-89844] - Analysis of Human LAMP1(CD107a) on Jurkat cells. Cells were treated, stained with purified anti-Human LAMP1(CD107a), then a FITC-conjugated second step antibody. The histogram were derived from gated events with the forward and side light-scatter characteristics of intact cells.



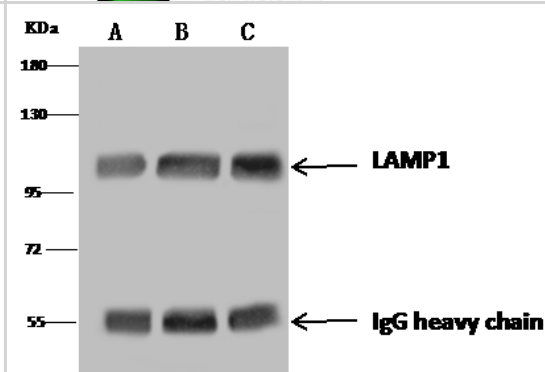
Immunohistochemistry-Paraffin: LAMP-1/CD107a Antibody (107) [NBP2-89844] - Staining of human LAMP1 in human placenta with rabbit monoclonal antibody (1:1000). The left panel: tissue incubated with primary antibody; The right panel: tissue incubated with the mixture of primary antibody and antigen (recombinant protein).



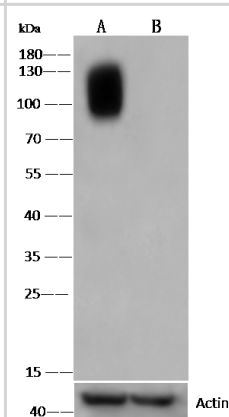
Immunoprecipitation: LAMP-1/CD107a Antibody (107) [NBP2-89844] - Lane A: 0.5 mg Jurkat Whole Cell Lysate 1 uL anti-LAMP1 rabbit monoclonal antibody and 15 ul of 50 % Protein G agarose. Primary antibody: Anti-LAMP1 rabbit monoclonal antibody, at 1:500 dilution Secondary antibody: Dylight 800-labeled antibody to rabbit IgG (H+L), at 1:5000 dilution Developed using the odssey technique. Performed under reducing conditions. Predicted band size: 45 kDa Observed band size: 113 kDa



LAMP-1/CD107a was immunoprecipitated using NBP2-89844 at a 1:100 dilution and 60ug Immunomagnetic beads Protein A/G and Goat Anti-Rabbit IgG (H+L)[HRP] as a secondary antibody at 1/10000 dilution: Lane A: 0.5 mg Jurkat Whole Cell Lysate. Lane B: 0.5 mg Hela Whole Cell Lysate. Lane C: 0.5 mg Daudi Whole Cell Lysate. Developed using the ECL technique. Performed under reducing conditions. Predicted band size: 45 kDa. Observed band size: 120 kDa



Western Blot: LAMP-1/CD107a Antibody (107) [NBP2-89844] - NBP2-89844 at 1:500 dilution. Lane A: Hela Whole Cell Lysate. Lane B: LAMP-1/CD107a knockout Hela Whole Cell Lysate. Lysates/proteins at 30 ug per lane. Secondary Goat Anti-Rabbit IgG (H+L) [HRP] at 1/10000 dilution. Developed using the ECL technique. Performed under reducing conditions. Predicted band size: 120 kDa. Observed band size: 100-130 kDa



Publications

Popescu NI, Cochran J, Duggan E et al. Internalization of Polymeric Bacterial Peptidoglycan Occurs through Either Actin or Dynamin Dependent Pathways Microorganisms Mar 3 2022 12:00AM [PMID: 35336127] (ICC/IF, Human)



Novus Biologicals USA

10730 E. Briarwood Avenue
Centennial, CO 80112
USA
Phone: 303.730.1950
Toll Free: 1.888.506.6887
Fax: 303.730.1966
nb-customerservice@bio-techne.com

Bio-Techne Canada

21 Canmotor Ave
Toronto, ON M8Z 4E6
Canada
Phone: 905.827.6400
Toll Free: 855.668.8722
Fax: 905.827.6402
canada.inquires@bio-techne.com

Bio-Techne Ltd

19 Barton Lane
Abingdon Science Park
Abingdon, OX14 3NB, United Kingdom
Phone: (44) (0) 1235 529449
Free Phone: 0800 37 34 15
Fax: (44) (0) 1235 533420
info.EMEA@bio-techne.com

General Contact Information

www.novusbio.com
Technical Support: nb-technical@bio-techne.com
Orders: nb-customerservice@bio-techne.com
General: novus@novusbio.com

Products Related to NBP2-89844-100ul

HAF008	Goat anti-Rabbit IgG Secondary Antibody [HRP]
NB7160	Goat anti-Rabbit IgG (H+L) Secondary Antibody [HRP]
NBP2-24891	Rabbit IgG Isotype Control
NBP2-61619PEP	LAMP-1/CD107a Recombinant Protein Antigen

Limitations

This product is for research use only and is not approved for use in humans or in clinical diagnosis. Primary Antibodies are guaranteed for 1 year from date of receipt.

For more information on our 100% guarantee, please visit www.novusbio.com/guarantee

Earn gift cards/discounts by submitting a review: www.novusbio.com/reviews/submit/NBP2-89844

Earn gift cards/discounts by submitting a publication using this product:
www.novusbio.com/publications

