

Product Datasheet

EpCAM/TROP1 Antibody (28) - Azide and BSA Free NBP2-89605-100ul

Unit Size: 100 ul

Store at 4C short term. Aliquot and store at -20C long term. Avoid freeze-thaw cycles.

www.novusbio.com



technical@novusbio.com

Protocols, Publications, Related Products, Reviews, Research Tools and Images at:
www.novusbio.com/NBP2-89605

Updated 2/26/2025 v.20.1

Earn rewards for product
reviews and publications.

Submit a publication at www.novusbio.com/publications

Submit a review at www.novusbio.com/reviews/destination/NBP2-89605



NBP2-89605-100ul

EpCAM/TROP1 Antibody (28) - Azide and BSA Free

Product Information	
Unit Size	100 ul
Concentration	Please see the vial label for concentration. If unlisted please contact technical services.
Storage	Store at 4C short term. Aliquot and store at -20C long term. Avoid freeze-thaw cycles.
Clonality	Monoclonal
Clone	28
Preservative	No Preservative
Isotype	IgG
Purity	Protein A purified
Buffer	0.2 um filtered solution in PBS

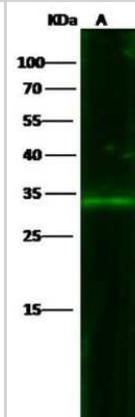
Product Description	
Description	This antibody can be stored at 2C-8C for one month without detectable loss of activity. Antibody products are stable for twelve months from date of receipt when stored at -20C to -80C. Avoid repeated freeze-thaw cycles.
Host	Rabbit
Gene ID	4072
Gene Symbol	EPCAM
Species	Human
Specificity/Sensitivity	No cross-reactivity in ELISA with: Human CD146 / MCAM Human CD171 / N-CAML1 / L1CAM Human OBCAM / OPCML Human TROP2 / TACSTD2
Immunogen	This antibody was obtained from a rabbit immunized with purified, recombinant Human EpCAM/TROP1 (Accession#: NP_002345.1; Met 1-Lys 265).

Product Application Details	
Applications	Western Blot, ELISA, Flow Cytometry, Immunocytochemistry/ Immunofluorescence, Immunohistochemistry, Immunohistochemistry-Paraffin, Immunoprecipitation, Sandwich ELISA Detection
Recommended Dilutions	Western Blot 1:500-1:1000, Flow Cytometry 1:100-1:500, ELISA 1:25000-1:50000, Immunohistochemistry, Immunocytochemistry/ Immunofluorescence 1:250-1:5000, Immunoprecipitation 0.2-1 ul/mg of lysate, Immunohistochemistry-Paraffin 1:1000-1:5000, Sandwich ELISA Detection 1:5000-1:50000

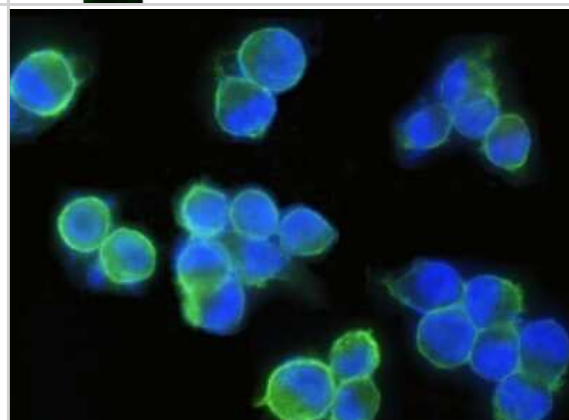


Images

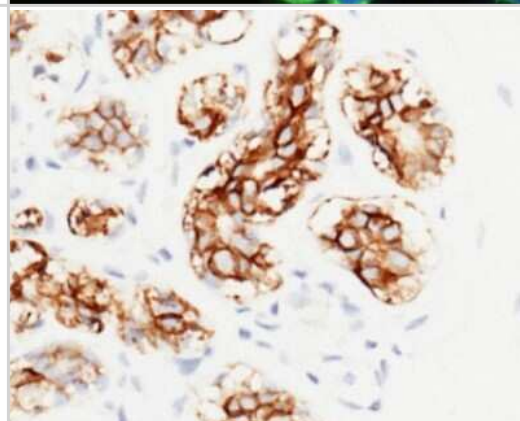
Western Blot: EpCAM/TROP1 Antibody (28) [NBP2-89605] - Lane A: MCF-7 Whole Cell Lysate Lysates/proteins at 30 ug per lane. Secondary Goat Anti-Rabbit IgG H&L (Dylight800) at 1/10000 dilution. Developed using the Odyssey technique. Performed under reducing conditions. Predicted band size:34 kDa Observed band size:38 kDa



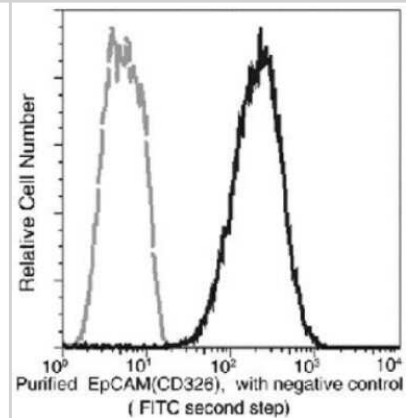
Immunocytochemistry/Immunofluorescence: EpCAM/TROP1 Antibody (28) [NBP2-89605] - Staining of Human EpCAM in SKBR3 cells. Cells were fixed with 4% PFA, blocked with 10% serum, and incubated with Rabbit anti-Human EpCAM monoclonal antibody (1:500) at 4c overnight. Then cells were stained with the Alexa Fluor(R) 488-conjugated Goat Anti-rabbit IgG secondary antibody (green) and counterstained with DAPI (blue). Positive staining was localized to plasma membrane.



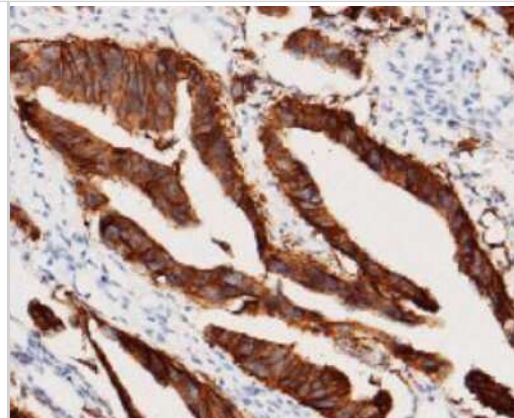
Immunohistochemistry-Paraffin: EpCAM/TROP1 Antibody (28) [NBP2-89605] - Human mammary gland with rabbit monoclonal antibody at 1:2500 dilution, formalin-fixed paraffin embedded sections. Positive staining was localized to membrane of alveolus epithelium.



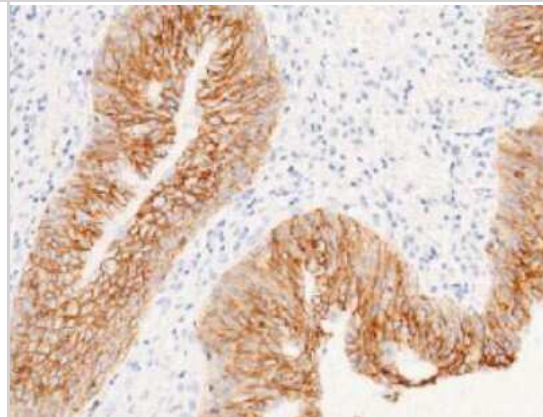
Flow Cytometry: EpCAM/TROP1 Antibody (28) [NBP2-89605] - Analysis of anti-EpCAM (CD326) reactivity on SKBR3 cells. SKBR3 cells were stained with anti-EpCAM (CD326) Monoclonal Ab, then a FITC-conjugated second step antibody. The histogram were derived from the gated events based on light scattering characteristics of viable cells.



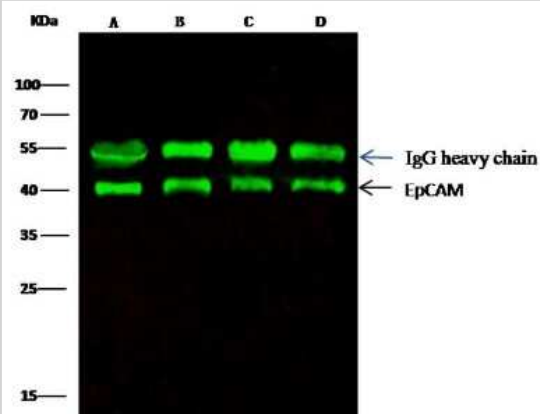
Immunohistochemistry-Paraffin: EpCAM/TROP1 Antibody (28) [NBP2-89605] - Staining of human EpCAM in human colon carcinoma with rabbit monoclonal antibody at 1:2500 dilution. Positive staining was localized to membrane of colonic gland epithelium.



Immunohistochemistry-Paraffin: EpCAM/TROP1 Antibody (28) [NBP2-89605] - Staining of human EpCAM in human bladder carcinoma with rabbit monoclonal antibody at 1:2500 dilution. Positive staining was localized to membrane of transitional epithelium.



Immunoprecipitation: EpCAM/TROP1 Antibody (28) [NBP2-89605] - Lane A:0.5 mg MCF-7 Whole Cell Lysate Lane B:0.5 mg A431 Whole Cell Lysate Lane C:0.5 mg HepG2 Whole Cell Lysate Lane D:0.5 mg Caco-2 Whole Cell Lysate 0.5 uL anti-EpCAM rabbit monoclonal antibody and 15 ul of 50 % Protein G agarose. Primary antibody: Anti-EpCAM rabbit monoclonal antibody, at 1:5000 dilution Secondary antibody: Dylight 800-labeled antibody to rabbit IgG (H+L), at 1:5000 dilution Developed using the odssey technique. Performed under reducing conditions. Predicted band size: 40 kDa Observed band size: 40 kDa





Novus Biologicals USA

10730 E. Briarwood Avenue
Centennial, CO 80112
USA
Phone: 303.730.1950
Toll Free: 1.888.506.6887
Fax: 303.730.1966
nb-customerservice@bio-techne.com

Bio-Techne Canada

21 Canmotor Ave
Toronto, ON M8Z 4E6
Canada
Phone: 905.827.6400
Toll Free: 855.668.8722
Fax: 905.827.6402
canada.inquires@bio-techne.com

Bio-Techne Ltd

19 Barton Lane
Abingdon Science Park
Abingdon, OX14 3NB, United Kingdom
Phone: (44) (0) 1235 529449
Free Phone: 0800 37 34 15
Fax: (44) (0) 1235 533420
info.EMEA@bio-techne.com

General Contact Information

www.novusbio.com
Technical Support: nb-technical@bio-techne.com
Orders: nb-customerservice@bio-techne.com
General: novus@novusbio.com

Products Related to NBP2-89605-100ul

HAF008	Goat anti-Rabbit IgG Secondary Antibody [HRP]
NB7160	Goat anti-Rabbit IgG (H+L) Secondary Antibody [HRP]
NBP2-24891	Rabbit IgG Isotype Control
NBP2-52190-0.05mg	Recombinant Human EpCAM/TROP1 His Protein

Limitations

This product is for research use only and is not approved for use in humans or in clinical diagnosis. Primary Antibodies are guaranteed for 1 year from date of receipt.

For more information on our 100% guarantee, please visit www.novusbio.com/guarantee

Earn gift cards/discounts by submitting a review: www.novusbio.com/reviews/submit/NBP2-89605

Earn gift cards/discounts by submitting a publication using this product:
www.novusbio.com/publications

