

Product Datasheet

EMMPRIN/CD147 Antibody (125) - Azide and BSA Free NBP2-89320-100ul

Unit Size: 100 ul

Store at 4C short term. Aliquot and store at -20C long term. Avoid freeze-thaw cycles.

www.novusbio.com



technical@novusbio.com

Protocols, Publications, Related Products, Reviews, Research Tools and Images at:
www.novusbio.com/NBP2-89320

Updated 2/26/2025 v.20.1

Earn rewards for product
reviews and publications.

Submit a publication at www.novusbio.com/publications

Submit a review at www.novusbio.com/reviews/destination/NBP2-89320



NBP2-89320-100ul

EMMPRIN/CD147 Antibody (125) - Azide and BSA Free

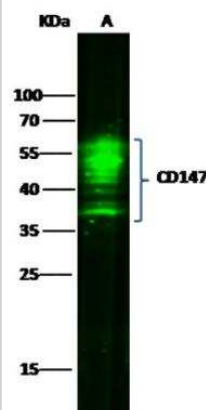
Product Information	
Unit Size	100 ul
Concentration	Please see the vial label for concentration. If unlisted please contact technical services.
Storage	Store at 4C short term. Aliquot and store at -20C long term. Avoid freeze-thaw cycles.
Clonality	Monoclonal
Clone	125
Preservative	No Preservative
Isotype	IgG
Purity	Protein A purified
Buffer	0.2 um filtered solution in PBS

Product Description	
Description	This antibody can be stored at 2C-8C for one month without detectable loss of activity. Antibody products are stable for twelve months from date of receipt when stored at -20C to -80C. Avoid repeated freeze-thaw cycles.
Host	Rabbit
Gene ID	682
Gene Symbol	BSG
Species	Human
Immunogen	This antibody was obtained from a rabbit immunized with purified, recombinant Human EMMPRIN/CD147 (Accession#: NP_940991.1; Met 1-His 205).

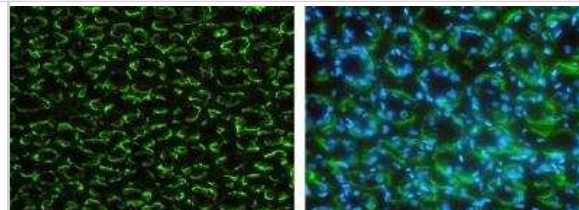
Product Application Details	
Applications	Western Blot, ELISA, Flow Cytometry, Immunocytochemistry/ Immunofluorescence, Immunohistochemistry-Frozen, Immunohistochemistry-Paraffin, Immunoprecipitation
Recommended Dilutions	Western Blot 1:500-1:2000, Flow Cytometry 1:25-1:100, ELISA 1:5000-1:10000, Immunocytochemistry/ Immunofluorescence 1:50-1:1000, Immunoprecipitation 4-6 uL/mg of lysate, Immunohistochemistry-Paraffin 1:2500-1:10000, Immunohistochemistry-Frozen 1:500-1:2000

Images

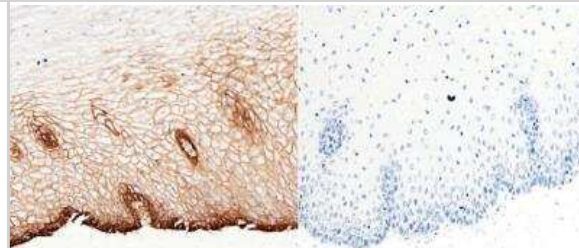
Western Blot: EMMPRIN/CD147 Antibody (125) [NBP2-89320] - Lane A: A431 Whole Cell Lysate Lysates/proteins at 30 ug per lane. Secondary Goat Anti-Rabbit IgG H&L (Dylight800) at 1/10000 dilution. Developed using the Odyssey technique. Performed under reducing conditions. Predicted band size:42 kDa Observed band size:54 kDa



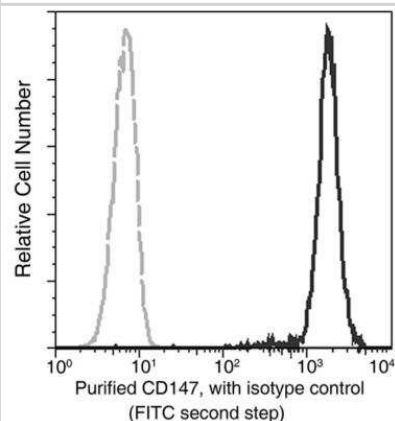
Immunocytochemistry/Immunofluorescence: EMMPRIN/CD147 Antibody (125) [NBP2-89320] - Staining of CD147 in monkey stomach with rabbit monoclonal antibody (1:1000, frozen section). The image showing membrane staining of gastric gland cell. The right panel: merge with DAPI



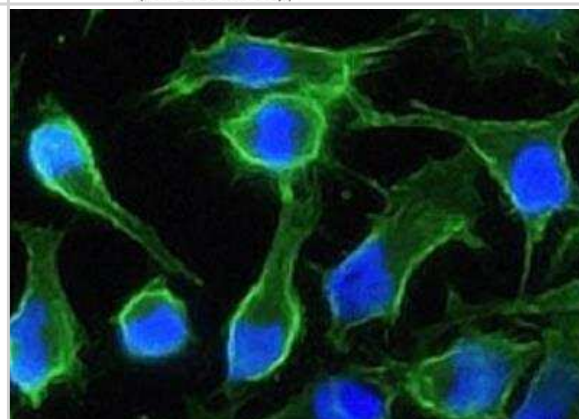
Immunohistochemistry-Paraffin: EMMPRIN/CD147 Antibody (125) [NBP2-89320] - Staining of human CD147 in human esophagus with rabbit monoclonal antibody (1:5000). The image showing membrane staining of squamous epithelium cell. The left panel: tissue incubated with primary antibody; The right panel: tissue incubated with the mixture of primary antibody and antigen (recombinant protein).



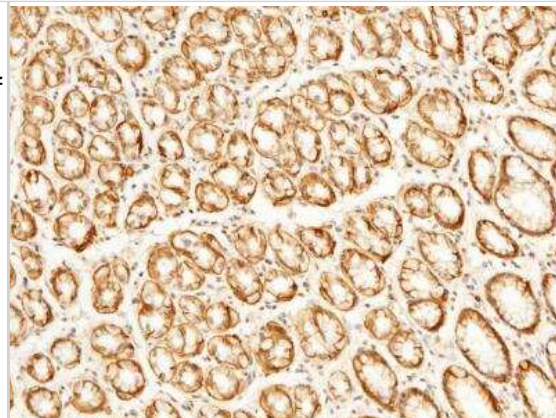
Flow Cytometry: EMMPRIN/CD147 Antibody (125) [NBP2-89320] - Analysis of anti-CD147 reactivity on HeLa cells.



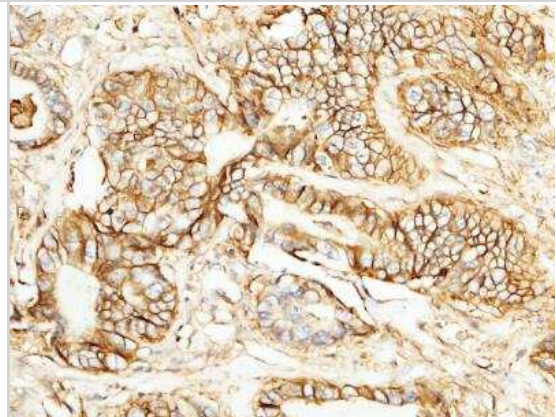
Immunocytochemistry/Immunofluorescence: EMMPRIN/CD147 Antibody (125) [NBP2-89320] - Staining of human CD147 in HeLa cells with rabbit monoclonal antibody (1:200). The image showing membrane staining of HeLa cells.



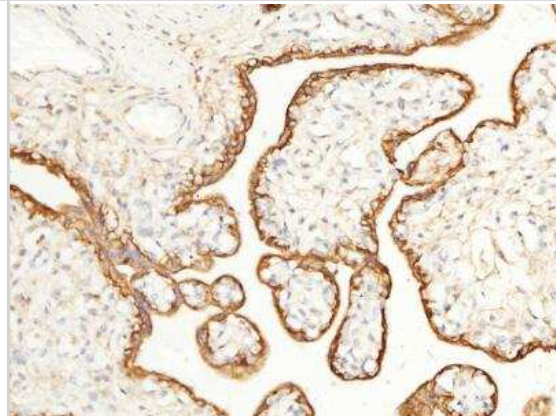
Immunohistochemistry-Paraffin: EMMPRIN/CD147 Antibody (125) [NBP2-89320] - Staining of human CD147 in human stomach with rabbit monoclonal antibody (1:5000). The image showing membrane staining of epithelium cell.



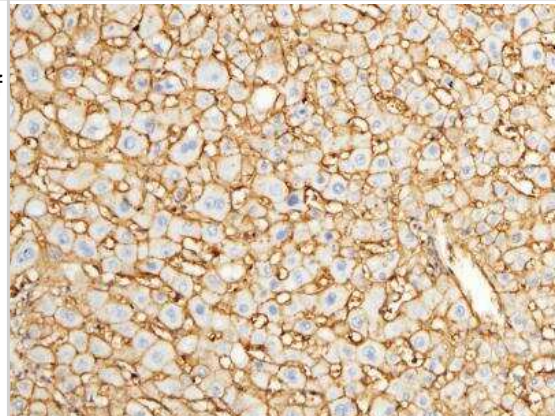
Immunohistochemistry-Paraffin: EMMPRIN/CD147 Antibody (125) [NBP2-89320] - Staining of human CD147 in human rectal cancer with rabbit monoclonal antibody (1:5000). The image showing membrane staining of epithelium cell in intestinal gland.



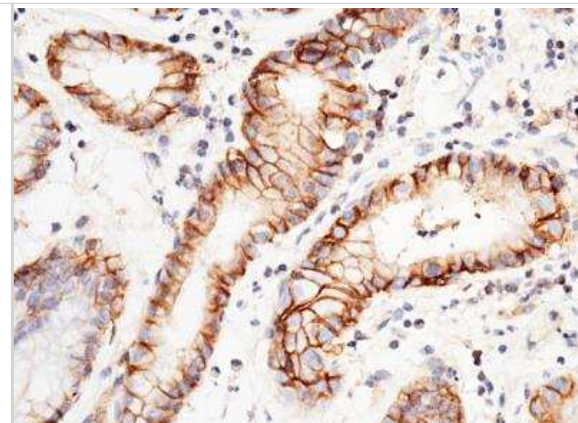
Immunohistochemistry-Paraffin: EMMPRIN/CD147 Antibody (125) [NBP2-89320] - Staining of human CD147 in human placenta with rabbit monoclonal antibody (1:5000). The image showing positive staining of trophoblast.



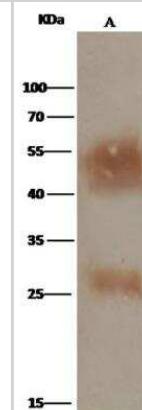
Immunohistochemistry-Paraffin: EMMPRIN/CD147 Antibody (125) [NBP2-89320] - Staining of human CD147 in human liver with rabbit monoclonal antibody (1:5000). The image showing membrane staining of hepatocyte.



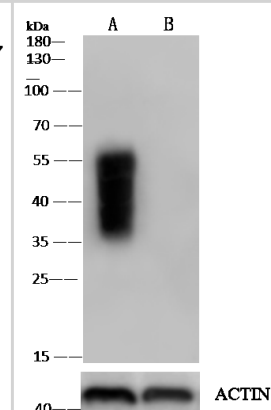
Immunohistochemistry-Paraffin: EMMPRIN/CD147 Antibody (125) [NBP2-89320] - Staining of human CD147 in human gastric cancer with rabbit monoclonal antibody (1:5000). The image showing membrane staining of epithelium cell.



Immunoprecipitation: EMMPRIN/CD147 Antibody (125) [NBP2-89320] - Lane A: 0.5 mg K562 Whole Cell Lysate 2 uL anti-CD147 rabbit monoclonal antibody and 15 ul of 50 % Protein G agarose. Primary antibody: Anti-CD147 rabbit monoclonal antibody, at 1:100 dilution Secondary antibody: Clean-Bloto IP Detection Reagent (HRP) at 1:1000 dilution Developed using the DAB staining technique. Performed under reducing conditions. Predicted band size: 42 kDa Observed band size: 50 kDa



Western Blot: EMMPRIN/CD147 Antibody (125) [NBP2-89320] - NBP2-89320 at 1:500 dilution. Lane A: HeLa Whole Cell Lysate. Lane B: CD147 knockout HeLa Whole Cell Lysate. Lysates/proteins at 30 ug per lane. Secondary Goat Anti-Rabbit IgG (H+L) [HRP] at 1/10000 dilution. Developed using the ECL technique. Performed under reducing conditions. Predicted band size: 42 kDa. Observed band size: 35-55 kDa





Novus Biologicals USA

10730 E. Briarwood Avenue
Centennial, CO 80112
USA
Phone: 303.730.1950
Toll Free: 1.888.506.6887
Fax: 303.730.1966
nb-customerservice@bio-techne.com

Bio-Techne Canada

21 Canmotor Ave
Toronto, ON M8Z 4E6
Canada
Phone: 905.827.6400
Toll Free: 855.668.8722
Fax: 905.827.6402
canada.inquires@bio-techne.com

Bio-Techne Ltd

19 Barton Lane
Abingdon Science Park
Abingdon, OX14 3NB, United Kingdom
Phone: (44) (0) 1235 529449
Free Phone: 0800 37 34 15
Fax: (44) (0) 1235 533420
info.EMEA@bio-techne.com

General Contact Information

www.novusbio.com
Technical Support: nb-technical@bio-techne.com
Orders: nb-customerservice@bio-techne.com
General: novus@novusbio.com

Products Related to NBP2-89320-100ul

HAF008	Goat anti-Rabbit IgG Secondary Antibody [HRP]
NB7160	Goat anti-Rabbit IgG (H+L) Secondary Antibody [HRP]
NBP2-24891	Rabbit IgG Isotype Control
NBP2-57810PEP	EMMPRIN/CD147 Recombinant Protein Antigen

Limitations

This product is for research use only and is not approved for use in humans or in clinical diagnosis. Primary Antibodies are guaranteed for 1 year from date of receipt.

For more information on our 100% guarantee, please visit www.novusbio.com/guarantee

Earn gift cards/discounts by submitting a review: www.novusbio.com/reviews/submit/NBP2-89320

Earn gift cards/discounts by submitting a publication using this product:
www.novusbio.com/publications

