

Product Datasheet

L1CAM Antibody (014) - Azide and BSA Free NBP2-89294-100ul

Unit Size: 100 ul

Store at 4C short term. Aliquot and store at -20C long term. Avoid freeze-thaw cycles.

www.novusbio.com



technical@novusbio.com

Protocols, Publications, Related Products, Reviews, Research Tools and Images at:
www.novusbio.com/NBP2-89294

Updated 2/26/2025 v.20.1

Earn rewards for product
reviews and publications.

Submit a publication at www.novusbio.com/publications

Submit a review at www.novusbio.com/reviews/destination/NBP2-89294



NBP2-89294-100ul

L1CAM Antibody (014) - Azide and BSA Free

| Product Information | |
|----------------------------|---|
| Unit Size | 100 ul |
| Concentration | Please see the vial label for concentration. If unlisted please contact technical services. |
| Storage | Store at 4C short term. Aliquot and store at -20C long term. Avoid freeze-thaw cycles. |
| Clonality | Monoclonal |
| Clone | 014 |
| Preservative | No Preservative |
| Isotype | IgG |
| Purity | Protein A purified |
| Buffer | 0.2 um filtered solution in PBS |

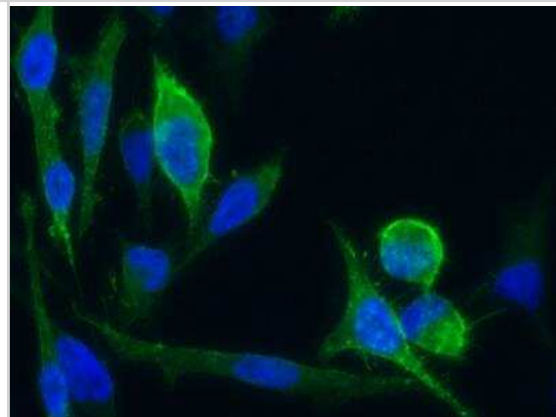
| Product Description | |
|----------------------------|---|
| Description | This antibody can be stored at 2C-8C for one month without detectable loss of activity. Antibody products are stable for twelve months from date of receipt when stored at -20C to -80C. Avoid repeated freeze-thaw cycles. |
| Host | Rabbit |
| Gene ID | 3897 |
| Gene Symbol | L1CAM |
| Species | Human |
| Immunogen | This antibody was obtained from a rabbit immunized with purified, recombinant Human L1CAM (Accession#: NP_000416.1; Met1-Glu1120). |

| Product Application Details | |
|------------------------------------|---|
| Applications | Flow Cytometry, Immunocytochemistry/ Immunofluorescence, Immunohistochemistry, Immunohistochemistry-Paraffin, Sandwich ELISA Detection |
| Recommended Dilutions | Flow Cytometry 1:25-1:100, Immunohistochemistry 1:100-1:500, Immunocytochemistry/ Immunofluorescence 1:20-1:100, Immunohistochemistry-Paraffin 1:100-1:500, Sandwich ELISA Detection 1:1000-1:10000 |
| Application Notes | This antibody will detect Human L1CAM in ELISA pair set (Catalog: # NBP2-79446). In a sandwich ELISA, it can be used as a detection antibody when paired with (Catalog: # NBP2-89292). |

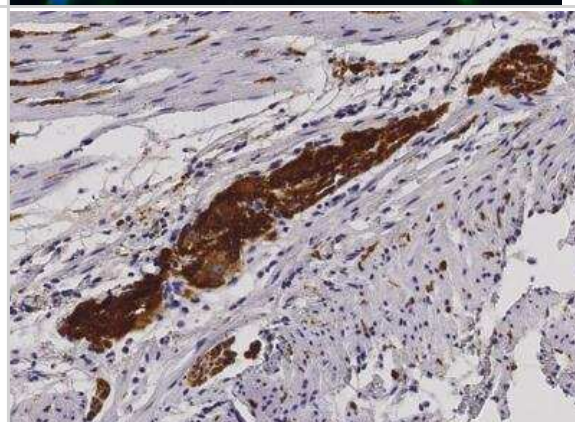


Images

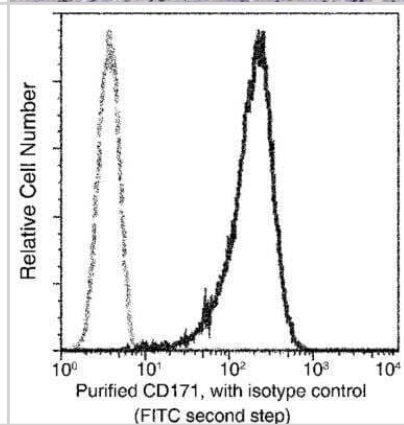
Immunocytochemistry/Immunofluorescence: L1CAM Antibody (014) [NBP2-89294] - Staining of Human CD171 in HeLa cells. Cells were fixed with 4% PFA, blocked with 10% serum, and incubated with rabbit anti-Human CD171 monoclonal antibody (1:60) at 37c 1 hour. Then cells were stained with the Alexa Fluor (R) 488-conjugated Goat Anti-rabbit IgG secondary antibody (green) and counterstained with DAPI (blue). Positive staining was localized to cells membrane.



Immunohistochemistry-Paraffin: L1CAM Antibody (014) [NBP2-89294] - Staining of human CD171 in human appendix with rabbit monoclonal antibody (1:200). Positive staining was localized to myenteric nerve plexus.



Flow Cytometry: L1CAM Antibody (014) [NBP2-89294] - Analysis of human CD171 expression on HeLa cells. Cells were stained with purified anti-Human CD171, then a FITC-conjugated second step antibody. The histogram were derived from events with the forward and side light-scatter characteristics of intact cells.





Novus Biologicals USA

10730 E. Briarwood Avenue
Centennial, CO 80112
USA
Phone: 303.730.1950
Toll Free: 1.888.506.6887
Fax: 303.730.1966
nb-customerservice@bio-techne.com

Bio-Techne Canada

21 Canmotor Ave
Toronto, ON M8Z 4E6
Canada
Phone: 905.827.6400
Toll Free: 855.668.8722
Fax: 905.827.6402
canada.inquires@bio-techne.com

Bio-Techne Ltd

19 Barton Lane
Abingdon Science Park
Abingdon, OX14 3NB, United Kingdom
Phone: (44) (0) 1235 529449
Free Phone: 0800 37 34 15
Fax: (44) (0) 1235 533420
info.EMEA@bio-techne.com

General Contact Information

www.novusbio.com
Technical Support: nb-technical@bio-techne.com
Orders: nb-customerservice@bio-techne.com
General: novus@novusbio.com

Products Related to NBP2-89294-100ul

| | |
|-----------------|---|
| HAF008 | Goat anti-Rabbit IgG Secondary Antibody [HRP] |
| NB7160 | Goat anti-Rabbit IgG (H+L) Secondary Antibody [HRP] |
| NBP2-24891 | Rabbit IgG Isotype Control |
| NBP2-59904-50ug | Recombinant Human L1CAM His Protein |

Limitations

This product is for research use only and is not approved for use in humans or in clinical diagnosis. Primary Antibodies are guaranteed for 1 year from date of receipt.

For more information on our 100% guarantee, please visit www.novusbio.com/guarantee

Earn gift cards/discounts by submitting a review: www.novusbio.com/reviews/submit/NBP2-89294

Earn gift cards/discounts by submitting a publication using this product:
www.novusbio.com/publications

