

# Product Datasheet

## Dopamine D2R/DRD2 Antibody - BSA Free NBP2-88996

Unit Size: 50 ul

Store at 4C short term. Aliquot and store at -20C long term. Avoid freeze-thaw cycles.

[www.novusbio.com](http://www.novusbio.com)



[technical@novusbio.com](mailto:technical@novusbio.com)

Protocols, Publications, Related Products, Reviews, Research Tools and Images at:  
[www.novusbio.com/NBP2-88996](http://www.novusbio.com/NBP2-88996)

Updated 2/26/2025 v.20.1

Earn rewards for product  
reviews and publications.

Submit a publication at [www.novusbio.com/publications](http://www.novusbio.com/publications)

Submit a review at [www.novusbio.com/reviews/destination/NBP2-88996](http://www.novusbio.com/reviews/destination/NBP2-88996)



**NBP2-88996**

Dopamine D2R/DRD2 Antibody - BSA Free

<b>Product Information</b>	
<b>Unit Size</b>	50 ul
<b>Concentration</b>	Please see the vial label for concentration. If unlisted please contact technical services.
<b>Storage</b>	Store at 4C short term. Aliquot and store at -20C long term. Avoid freeze-thaw cycles.
<b>Clonality</b>	Polyclonal
<b>Preservative</b>	0.01% Sodium Azide
<b>Purity</b>	Peptide affinity purified
<b>Buffer</b>	PBS containing 50% glycerol
<b>Target Molecular Weight</b>	51 kDa

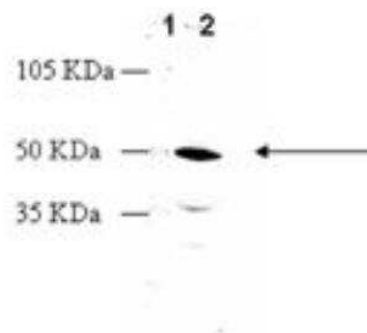
<b>Product Description</b>	
<b>Host</b>	Rabbit
<b>Gene ID</b>	1813
<b>Gene Symbol</b>	DRD2
<b>Species</b>	Human, Mouse, Rat, Avian
<b>Reactivity Notes</b>	Predicted species reactivity based on epitope sequence homology: rhesus macaque, chimpanzee, horse, arctic fox, dog, opossum, ferret. Avian reactivity reported from a verified customer review.
<b>Immunogen</b>	Synthetic peptide corresponding to the sequence near the N-terminus of mouse Dopamine D2R/DRD2.

<b>Product Application Details</b>	
<b>Applications</b>	Western Blot, ELISA, Immunohistochemistry
<b>Recommended Dilutions</b>	Western Blot, ELISA, Immunohistochemistry

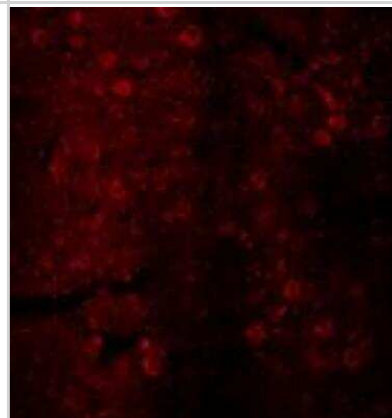


## Images

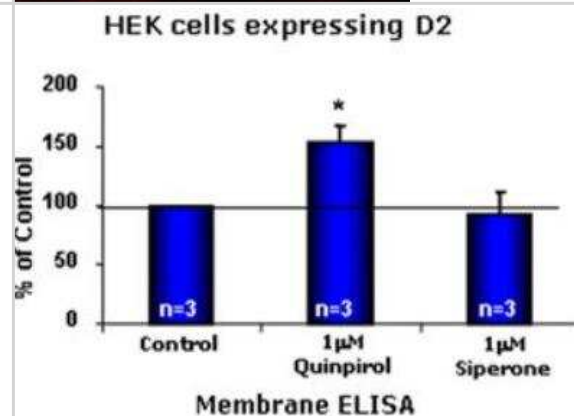
Western Blot: Dopamine D2R/DRD2 Antibody [NBP2-88996] - MW marker (1) and 10ug of rat heart membrane extract (2) probed with Dopamine Receptor (D2) pAb at 4.0ug/ml.



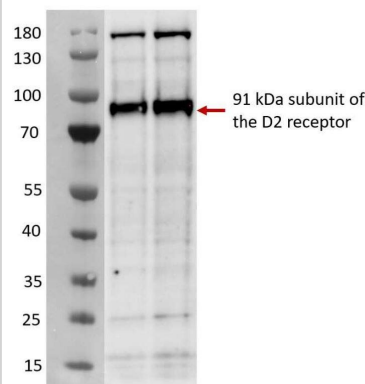
Immunohistochemistry: Dopamine D2R/DRD2 Antibody [NBP2-88996] - Rat cerebral cortex. Neurons are labeled with Dopamine Receptor (D2) pAb in conjunction with Cy3 conjugated rabbit IgG antibody (H+L).



ELISA: Dopamine D2R/DRD2 Antibody [NBP2-88996] - HEK293 cells expressing dopamine receptor (D2) were treated with indicated concentrations of agonist (Quinpirol) and antagonist (Siperone) and probed with Dopamine Receptor (D2) pAb (1:1000 of a stock solution of 1ug/uL) by cellular ELISA. Data from vehicle treated cells were taken as 100%. Results are the mean  $\pm$ SEM (n=3).



Western Blot: Dopamine D2R/DRD2 Antibody [NBP2-88996] - Dopamine D2R/DRD2 antibody [NBP2-88996]. Left image is the MW marker and right is two replicates of ~20 ug protein extract from one hemisphere of house sparrow brain tissue stained with D2 primary antibody at 1.0 ug/ml. Image from verified customer review.





### Novus Biologicals USA

10730 E. Briarwood Avenue  
Centennial, CO 80112  
USA  
Phone: 303.730.1950  
Toll Free: 1.888.506.6887  
Fax: 303.730.1966  
nb-customerservice@bio-techne.com

### Bio-Techne Canada

21 Canmotor Ave  
Toronto, ON M8Z 4E6  
Canada  
Phone: 905.827.6400  
Toll Free: 855.668.8722  
Fax: 905.827.6402  
canada.inquires@bio-techne.com

### Bio-Techne Ltd

19 Barton Lane  
Abingdon Science Park  
Abingdon, OX14 3NB, United Kingdom  
Phone: (44) (0) 1235 529449  
Free Phone: 0800 37 34 15  
Fax: (44) (0) 1235 533420  
info.EMEA@bio-techne.com

### General Contact Information

www.novusbio.com  
Technical Support: nb-technical@bio-techne.com  
Orders: nb-customerservice@bio-techne.com  
General: novus@novusbio.com

### Products Related to NBP2-88996

---

HAF008	Goat anti-Rabbit IgG Secondary Antibody [HRP]
NB7160	Goat anti-Rabbit IgG (H+L) Secondary Antibody [HRP]
H00001813-Q01-10ug	Recombinant Human Dopamine D2R/DRD2 GST (N-Term) Protein
NBP2-67264	Human Dopamine D2R/DRD2 ELISA Kit (Colorimetric)

---

### Limitations

This product is for research use only and is not approved for use in humans or in clinical diagnosis. Primary Antibodies are guaranteed for 1 year from date of receipt.

For more information on our 100% guarantee, please visit [www.novusbio.com/guarantee](http://www.novusbio.com/guarantee)

Earn gift cards/discounts by submitting a review: [www.novusbio.com/reviews/submit/NBP2-88996](http://www.novusbio.com/reviews/submit/NBP2-88996)

Earn gift cards/discounts by submitting a publication using this product:  
[www.novusbio.com/publications](http://www.novusbio.com/publications)

