

# Product Datasheet

## SPDEF Antibody - BSA Free

### NBP2-88355

Unit Size: 100 ul

Store at 4C short term. Aliquot and store at -20C long term. Avoid freeze-thaw cycles.

[www.novusbio.com](http://www.novusbio.com)



[technical@novusbio.com](mailto:technical@novusbio.com)

Protocols, Publications, Related Products, Reviews, Research Tools and Images at:  
[www.novusbio.com/NBP2-88355](http://www.novusbio.com/NBP2-88355)

Updated 2/26/2025 v.20.1

Earn rewards for product  
reviews and publications.

Submit a publication at [www.novusbio.com/publications](http://www.novusbio.com/publications)

Submit a review at [www.novusbio.com/reviews/destination/NBP2-88355](http://www.novusbio.com/reviews/destination/NBP2-88355)



**NBP2-88355**

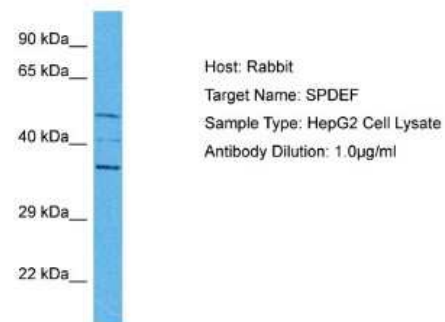
SPDEF Antibody - BSA Free

Product Information	
Unit Size	100 ul
Concentration	0.5 mg/ml
Storage	Store at 4C short term. Aliquot and store at -20C long term. Avoid freeze-thaw cycles.
Clonality	Polyclonal
Preservative	0.09% Sodium Azide
Purity	Affinity purified
Buffer	PBS, 2% Sucrose
Product Description	
Host	Rabbit
Gene ID	25803
Gene Symbol	SPDEF
Species	Human
Immunogen	The immunogen is a synthetic peptide directed towards the middle region of human SPDEF. Peptide sequence: ELCAMSEEQFRQRSPLGGDVLHAHLDIWKSAAWMKERTSPGAIHYCASTS The peptide sequence for this immunogen was taken from within the described region.
Product Application Details	
Applications	Western Blot
Recommended Dilutions	Western Blot 1.0 ug/ml



## Images

Western Blot: SPDEF Antibody [NBP2-88355] - Host: Rabbit. Target Name: SPDEF. Sample Tissue: Human HepG2 Whole Cell. Antibody Dilution: 1ug/ml



Western Blot: SPDEF Antibody [NBP2-88355] - WB Suggested Anti-SPDEF Antibody Titration: 0.2-1 ug/ml. Positive Control: Human Placenta



Western Blot: SPDEF Antibody [NBP2-88355] - Host: Rabbit. Target Name: SPDEF. Sample Tissue: Human Jurkat Whole Cell. Antibody Dilution: 1ug/ml



**Novus Biologicals USA**

10730 E. Briarwood Avenue  
Centennial, CO 80112  
USA  
Phone: 303.730.1950  
Toll Free: 1.888.506.6887  
Fax: 303.730.1966  
nb-customerservice@bio-techne.com

**Bio-Techne Canada**

21 Canmotor Ave  
Toronto, ON M8Z 4E6  
Canada  
Phone: 905.827.6400  
Toll Free: 855.668.8722  
Fax: 905.827.6402  
canada.inquires@bio-techne.com

**Bio-Techne Ltd**

19 Barton Lane  
Abingdon Science Park  
Abingdon, OX14 3NB, United Kingdom  
Phone: (44) (0) 1235 529449  
Free Phone: 0800 37 34 15  
Fax: (44) (0) 1235 533420  
info.EMEA@bio-techne.com

**General Contact Information**

[www.novusbio.com](http://www.novusbio.com)  
Technical Support: nb-technical@bio-techne.com  
Orders: nb-customerservice@bio-techne.com  
General: novus@novusbio.com

**Products Related to NBP2-88355**

---

HAF008	Goat anti-Rabbit IgG Secondary Antibody [HRP]
NB7160	Goat anti-Rabbit IgG (H+L) Secondary Antibody [HRP]
H00025803-P01-10ug	Recombinant Human SPDEF GST (N-Term) Protein
DY413-05	IL-13 [Biotin]

---

**Limitations**

This product is for research use only and is not approved for use in humans or in clinical diagnosis. Primary Antibodies are guaranteed for 1 year from date of receipt.

For more information on our 100% guarantee, please visit [www.novusbio.com/guarantee](http://www.novusbio.com/guarantee)

Earn gift cards/discounts by submitting a review: [www.novusbio.com/reviews/submit/NBP2-88355](http://www.novusbio.com/reviews/submit/NBP2-88355)

Earn gift cards/discounts by submitting a publication using this product:  
[www.novusbio.com/publications](http://www.novusbio.com/publications)

