

Product Datasheet

KDM6A Antibody - BSA Free

NBP2-87672

Unit Size: 100 ul

Store at 4C short term. Aliquot and store at -20C long term. Avoid freeze-thaw cycles.

www.novusbio.com



technical@novusbio.com

Protocols, Publications, Related Products, Reviews, Research Tools and Images at:
www.novusbio.com/NBP2-87672

Updated 2/26/2025 v.20.1

Earn rewards for product
reviews and publications.

Submit a publication at www.novusbio.com/publications

Submit a review at www.novusbio.com/reviews/destination/NBP2-87672



NBP2-87672

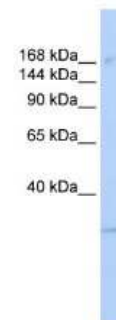
KDM6A Antibody - BSA Free

Product Information	
Unit Size	100 ul
Concentration	0.5 mg/ml
Storage	Store at 4C short term. Aliquot and store at -20C long term. Avoid freeze-thaw cycles.
Clonality	Polyclonal
Preservative	0.09% Sodium Azide
Purity	Affinity purified
Buffer	PBS, 2% Sucrose
Product Description	
Host	Rabbit
Gene ID	7403
Gene Symbol	KDM6A
Species	Human
Immunogen	The immunogen is a synthetic peptide directed towards the C-terminal region of human KDM6A. Peptide Sequence KTYIVHCQDCARKTSGNLENFVVLEQYKMEDLMQVYDQFTLAPPLPSASS. The peptide sequence for this immunogen was taken from within the described region.
Product Application Details	
Applications	Western Blot
Recommended Dilutions	Western Blot 1.0 ug/ml

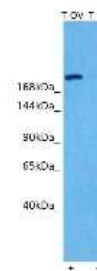


Images

Western Blot: KDM6A Antibody [NBP2-87672] - WB Suggested Anti-UTX Antibody Titration: 0.2-1 ug/ml. ELISA Titer: 1:312500. Positive Control: MCF7 cell lysate KDM6A is strongly supported by BioGPS gene expression data to be expressed in Human MCF7 cells



Western Blot: KDM6A Antibody [NBP2-87672] - Host: Rabbit. Target: KDM6A. Positive control (+): Human Ovary (OV). Negative control (-): Human liver (LI). Antibody concentration: 1ug/ml



Host: Rabbit
Target name: KDM6A
Positive control: ~25ug Human Ovary Tumor (T-OV)
Negative control: ~25ug Human Liver Tumor (T-LI)
Antibody concentration: 1ug/ml



Novus Biologicals USA

10730 E. Briarwood Avenue
Centennial, CO 80112
USA
Phone: 303.730.1950
Toll Free: 1.888.506.6887
Fax: 303.730.1966
nb-customerservice@bio-techne.com

Bio-Techne Canada

21 Canmotor Ave
Toronto, ON M8Z 4E6
Canada
Phone: 905.827.6400
Toll Free: 855.668.8722
Fax: 905.827.6402
canada.inquires@bio-techne.com

Bio-Techne Ltd

19 Barton Lane
Abingdon Science Park
Abingdon, OX14 3NB, United Kingdom
Phone: (44) (0) 1235 529449
Free Phone: 0800 37 34 15
Fax: (44) (0) 1235 533420
info.EMEA@bio-techne.com

General Contact Information

www.novusbio.com
Technical Support: nb-technical@bio-techne.com
Orders: nb-customerservice@bio-techne.com
General: novus@novusbio.com

Products Related to NBP2-87672

HAF008	Goat anti-Rabbit IgG Secondary Antibody [HRP]
NB7160	Goat anti-Rabbit IgG (H+L) Secondary Antibody [HRP]
H00007403-Q01-10ug	Recombinant Human KDM6A GST (N-Term) Protein
NBL1-17682	KDM6A Overexpression Lysate

Limitations

This product is for research use only and is not approved for use in humans or in clinical diagnosis. Primary Antibodies are guaranteed for 1 year from date of receipt.

For more information on our 100% guarantee, please visit www.novusbio.com/guarantee

Earn gift cards/discounts by submitting a review: www.novusbio.com/reviews/submit/NBP2-87672

Earn gift cards/discounts by submitting a publication using this product:
www.novusbio.com/publications

