

# Product Datasheet

## GlyT2/SLC6A5 Antibody - BSA Free NBP2-86653-0.1ml

Unit Size: 0.1ml

Store at 4C short term. Aliquot and store at -20C long term. Avoid freeze-thaw cycles.

[www.novusbio.com](http://www.novusbio.com)



[technical@novusbio.com](mailto:technical@novusbio.com)

Protocols, Publications, Related Products, Reviews, Research Tools and Images at:  
[www.novusbio.com/NBP2-86653](http://www.novusbio.com/NBP2-86653)

Updated 2/26/2025 v.20.1

Earn rewards for product  
reviews and publications.

Submit a publication at [www.novusbio.com/publications](http://www.novusbio.com/publications)

Submit a review at [www.novusbio.com/reviews/destination/NBP2-86653](http://www.novusbio.com/reviews/destination/NBP2-86653)



**NBP2-86653-0.1ml**

GlyT2/SLC6A5 Antibody - BSA Free

<b>Product Information</b>	
<b>Unit Size</b>	0.1ml
<b>Concentration</b>	0.5 mg/ml
<b>Storage</b>	Store at 4C short term. Aliquot and store at -20C long term. Avoid freeze-thaw cycles.
<b>Clonality</b>	Polyclonal
<b>Preservative</b>	0.09% Sodium Azide
<b>Purity</b>	Affinity purified
<b>Buffer</b>	PBS, 2% Sucrose
<b>Product Description</b>	
<b>Host</b>	Rabbit
<b>Gene ID</b>	9152
<b>Gene Symbol</b>	SLC6A5
<b>Species</b>	Human
<b>Immunogen</b>	The immunogen is a synthetic peptide directed towards the N-terminal region of human GlyT2/SLC6A5. Peptide sequence: KNSTFCMTAYPNVTMVNFTSQANKTFVSGSEEYFKYFVLKISAGIEYPGE The peptide sequence for this immunogen was taken from within the described region.
<b>Product Application Details</b>	
<b>Applications</b>	Western Blot, Immunohistochemistry, Immunohistochemistry-Paraffin
<b>Recommended Dilutions</b>	Western Blot 1.0 ug/ml, Immunohistochemistry, Immunohistochemistry-Paraffin

## Images

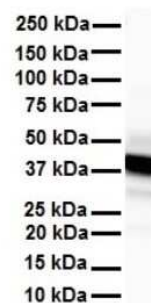
Western Blot: GlyT2/SLC6A5 Antibody [NBP2-86653] - Host: Rabbit.  
Target Name: SLC6A5. Sample Type: COLO205 Whole cell lysates.  
Antibody Dilution: 1.0ug/ml



Immunohistochemistry-Paraffin: GlyT2/SLC6A5 Antibody [NBP2-86653]  
- Rabbit Anti-SLC6A5 Antibody. Formalin Fixed Paraffin Embedded  
Tissue: Human Adult heart. Observed Staining: Cytoplasmic. Primary  
Antibody Concentration: 1:600. Secondary Antibody: Donkey anti-  
Rabbit-Cy2/3. Secondary Antibody



Western Blot: GlyT2/SLC6A5 Antibody [NBP2-86653] - WB Suggested  
Anti-SLC6A5 antibody Titration: 1 ug/mL. Sample Type: Human heart





### Novus Biologicals USA

10730 E. Briarwood Avenue  
Centennial, CO 80112  
USA  
Phone: 303.730.1950  
Toll Free: 1.888.506.6887  
Fax: 303.730.1966  
nb-customerservice@bio-techne.com

### Bio-Techne Canada

21 Canmotor Ave  
Toronto, ON M8Z 4E6  
Canada  
Phone: 905.827.6400  
Toll Free: 855.668.8722  
Fax: 905.827.6402  
canada.inquires@bio-techne.com

### Bio-Techne Ltd

19 Barton Lane  
Abingdon Science Park  
Abingdon, OX14 3NB, United Kingdom  
Phone: (44) (0) 1235 529449  
Free Phone: 0800 37 34 15  
Fax: (44) (0) 1235 533420  
info.EMEA@bio-techne.com

### General Contact Information

www.novusbio.com  
Technical Support: nb-technical@bio-techne.com  
Orders: nb-customerservice@bio-techne.com  
General: novus@novusbio.com

### Products Related to NBP2-86653-0.1ml

---

HAF008	Goat anti-Rabbit IgG Secondary Antibody [HRP]
NB7160	Goat anti-Rabbit IgG (H+L) Secondary Antibody [HRP]
H00009152-Q01-10ug	Recombinant Human GlyT2/SLC6A5 GST (N-Term) Protein
8334-GT-025	MGAT1 [Unconjugated]

---

### Limitations

This product is for research use only and is not approved for use in humans or in clinical diagnosis. Primary Antibodies are guaranteed for 1 year from date of receipt.

For more information on our 100% guarantee, please visit [www.novusbio.com/guarantee](http://www.novusbio.com/guarantee)

Earn gift cards/discounts by submitting a review: [www.novusbio.com/reviews/submit/NBP2-86653](http://www.novusbio.com/reviews/submit/NBP2-86653)

Earn gift cards/discounts by submitting a publication using this product:  
[www.novusbio.com/publications](http://www.novusbio.com/publications)

