

Product Datasheet

Rat LDHD ELISA Kit (Colorimetric) NBP2-82463

Unit Size: 1 Kit

Storage of components varies. See protocol for specific instructions.

www.novusbio.com



technical@novusbio.com

Protocols, Publications, Related Products, Reviews, Research Tools and Images at:
www.novusbio.com/NBP2-82463

Updated 9/23/2021 v.20.1

Earn rewards for product
reviews and publications.

Submit a publication at www.novusbio.com/publications

Submit a review at www.novusbio.com/reviews/destination/NBP2-82463



NBP2-82463**Rat LDHD ELISA Kit (Colorimetric)**

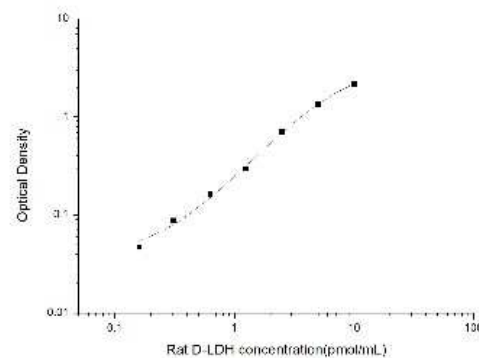
| Product Information | |
|----------------------------|--|
| Unit Size | 1 Kit |
| Concentration | Concentration is not relevant for this product. Please see the protocols for proper use of this product. |
| Storage | Storage of components varies. See protocol for specific instructions. |

| Product Description | |
|--------------------------------|--|
| Gene ID | 197257 |
| Gene Symbol | LDHD |
| Species | Rat |
| Specificity/Sensitivity | This kit recognizes Rat LDHD in samples. No Significant cross-reactivity or interference between Rat LDHD and analogues was observed. |
| Kit Components | Micro ELISA Plate(Dismountable), Reference Standard, Concentrated Biotinylated Detection Ab (100x), Concentrated HRP Conjugate (100x), Reference Standard & Sample Diluent, Biotinylated Detection Ab Diluent, HRP Conjugate Diluent, Concentrated Wash Buffer (25x), Substrate Reagent, Stop Solution, Plate Sealer, Product Description, Certificate of Analysis |
| Standard Curve Range | 0.16 - 10 pmol/mL |
| Sensitivity | 0.09 pmol/mL |
| Inter Assay | CV% < 6.24 |
| Intra Assay | CV% < 5.15 |
| Assay Type | Sandwich-ELISA |
| Spiking Recovery | 86-107% |
| Suitable Sample Type | Serum, plasma, cell supernatant, and other biological fluids. |
| Sample Volume | 100 ul |

| Product Application Details | |
|------------------------------------|-------|
| Applications | ELISA |
| Recommended Dilutions | ELISA |

Images

ELISA: Rat LDHD ELISA Kit (Colorimetric) [NBP2-82463] - Standard Curve Reference





Novus Biologicals USA

10730 E. Briarwood Avenue
Centennial, CO 80112
USA
Phone: 303.730.1950
Toll Free: 1.888.506.6887
Fax: 303.730.1966
nb-customerservice@bio-techne.com

Bio-Techne Canada

21 Canmotor Ave
Toronto, ON M8Z 4E6
Canada
Phone: 905.827.6400
Toll Free: 855.668.8722
Fax: 905.827.6402
canada.inquires@bio-techne.com

Bio-Techne Ltd

19 Barton Lane
Abingdon Science Park
Abingdon, OX14 3NB, United Kingdom
Phone: (44) (0) 1235 529449
Free Phone: 0800 37 34 15
Fax: (44) (0) 1235 533420
info.EMEA@bio-techne.com

General Contact Information

www.novusbio.com
Technical Support: nb-technical@bio-
techne.com
Orders: nb-customerservice@bio-techne.com
General: novus@novusbio.com

Products Related to NBP2-82463

| | |
|-------------------|---|
| H00197257-P01-2ug | Recombinant Human LDHD GST (N-Term) Protein |
| NB100-182 | FANCD2 Antibody - BSA Free |
| NBP2-48748 | LDHD Antibody |
| NB100-56503 | Cytochrome c Antibody (7H8.2C12) - BSA Free |

Limitations

This product is for research use only and is not approved for use in humans or in clinical diagnosis. ELISA Kits are guaranteed for 6 months from date of receipt.

For more information on our 100% guarantee, please visit www.novusbio.com/guarantee

Earn gift cards/discounts by submitting a review: www.novusbio.com/reviews/submit/NBP2-82463

Earn gift cards/discounts by submitting a publication using this product:
www.novusbio.com/publications

