

# Product Datasheet

## KIR2DS2 Antibody - BSA Free NBP2-82102

Unit Size: 0.1 mg

Store at 4C short term. Aliquot and store at -20C long term. Avoid freeze-thaw cycles.

[www.novusbio.com](http://www.novusbio.com)



[technical@novusbio.com](mailto:technical@novusbio.com)

Protocols, Publications, Related Products, Reviews, Research Tools and Images at:  
[www.novusbio.com/NBP2-82102](http://www.novusbio.com/NBP2-82102)

Updated 10/19/2023 v.20.1

Earn rewards for product  
reviews and publications.

Submit a publication at [www.novusbio.com/publications](http://www.novusbio.com/publications)

Submit a review at [www.novusbio.com/reviews/destination/NBP2-82102](http://www.novusbio.com/reviews/destination/NBP2-82102)



**NBP2-82102**

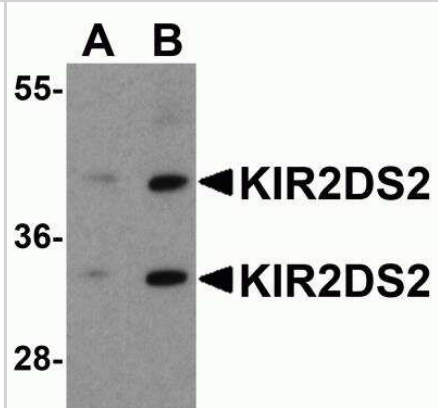
KIR2DS2 Antibody - BSA Free

<b>Product Information</b>	
<b>Unit Size</b>	0.1 mg
<b>Concentration</b>	1 mg/ml
<b>Storage</b>	Store at 4C short term. Aliquot and store at -20C long term. Avoid freeze-thaw cycles.
<b>Clonality</b>	Polyclonal
<b>Preservative</b>	0.02% Sodium Azide
<b>Isotype</b>	IgG
<b>Purity</b>	Peptide affinity purified
<b>Buffer</b>	PBS
<b>Target Molecular Weight</b>	34, 42 kDa
<b>Product Description</b>	
<b>Host</b>	Rabbit
<b>Gene ID</b>	100132285
<b>Gene Symbol</b>	KIR2DS2
<b>Species</b>	Human
<b>Specificity/Sensitivity</b>	KIR2DS2 antibody is human specific. Multiple isoforms are known to exist.
<b>Immunogen</b>	KIR2DS2 antibody was raised against an 18 amino acid peptide near the carboxy terminus of human KIR2DS2. The immunogen is located within the last 50 amino acids of KIR2DS2. Amino Acid Sequence: EPAGNRTVNSEDSDEQDH
<b>Product Application Details</b>	
<b>Applications</b>	Western Blot, ELISA, Immunocytochemistry/Immunofluorescence
<b>Recommended Dilutions</b>	Western Blot 1-2 ug/ml, ELISA, Immunocytochemistry/Immunofluorescence 20 ug/ml

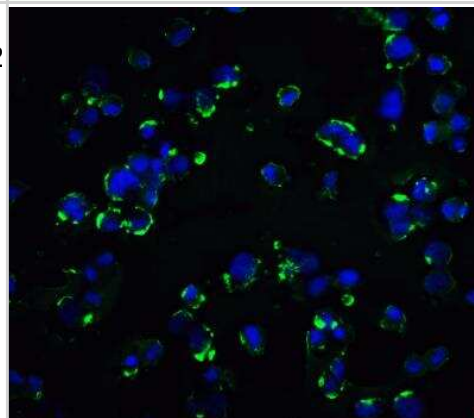


## Images

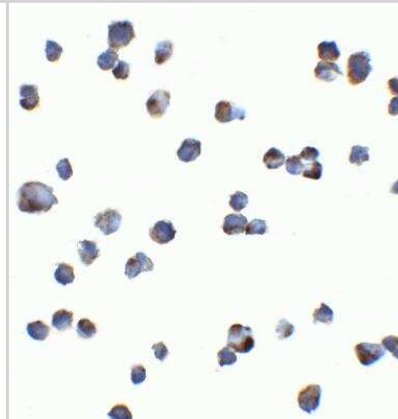
Western Blot: KIR2DS2 Antibody [NBP2-82102] - Western blot analysis of KIR2DS2 in 293 cell lysate with KIR2DS2 antibody at (A) 1 and (B) 2 ug/ml.



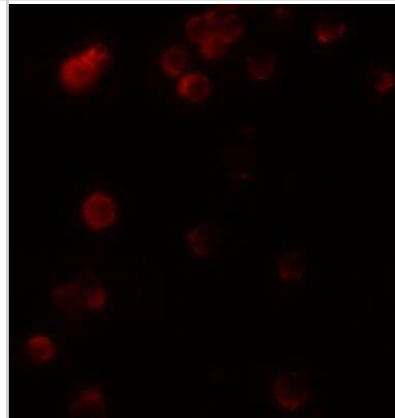
Immunocytochemistry/Immunofluorescence: KIR2DS2 Antibody [NBP2-82102] - Immunofluorescence of KIR2DS2 in Hek293 cells with KIR2DS2 antibody at 20 ug/mL. Green: KIR2DS2 Antibody (NBP2-82102). Blue: DAPI staining.



Immunocytochemistry/Immunofluorescence: KIR2DS2 Antibody [NBP2-82102] - Immunocytochemistry of KIR2DS2 in Hek293 cells with KIR2DS2 antibody at 5 ug/mL.



Immunocytochemistry/Immunofluorescence: KIR2DS2 Antibody [NBP2-82102] - Immunofluorescence of KIR2DS2 in 293 cells with KIR2DS2 antibody at 20 ug/ml.





### **Novus Biologicals USA**

10730 E. Briarwood Avenue  
Centennial, CO 80112  
USA  
Phone: 303.730.1950  
Toll Free: 1.888.506.6887  
Fax: 303.730.1966  
nb-customerservice@bio-techne.com

### **Bio-Techne Canada**

21 Canmotor Ave  
Toronto, ON M8Z 4E6  
Canada  
Phone: 905.827.6400  
Toll Free: 855.668.8722  
Fax: 905.827.6402  
canada.inquires@bio-techne.com

### **Bio-Techne Ltd**

19 Barton Lane  
Abingdon Science Park  
Abingdon, OX14 3NB, United Kingdom  
Phone: (44) (0) 1235 529449  
Free Phone: 0800 37 34 15  
Fax: (44) (0) 1235 533420  
info.EMEA@bio-techne.com

### **General Contact Information**

www.novusbio.com  
Technical Support: nb-technical@bio-techne.com  
Orders: nb-customerservice@bio-techne.com  
General: novus@novusbio.com

Error: Subreport could not be shown.

---

### **Limitations**

This product is for research use only and is not approved for use in humans or in clinical diagnosis. Primary Antibodies are guaranteed for 1 year from date of receipt.

For more information on our 100% guarantee, please visit [www.novusbio.com/guarantee](http://www.novusbio.com/guarantee)

Earn gift cards/discounts by submitting a review: [www.novusbio.com/reviews/submit/NBP2-82102](http://www.novusbio.com/reviews/submit/NBP2-82102)

Earn gift cards/discounts by submitting a publication using this product:  
[www.novusbio.com/publications](http://www.novusbio.com/publications)

