

# Product Datasheet

## **Pollen allergen Phl p 1 Antibody (Clone 25) - Azide and BSA Free**

### **NBP2-81275-0.05mg**

Unit Size: 0.05 mg

Store at 4C for up to 3 months. For longer storage, aliquot and store at -20C.

[www.novusbio.com](http://www.novusbio.com)



[technical@novusbio.com](mailto:technical@novusbio.com)

Protocols, Publications, Related Products, Reviews, Research Tools and Images at:  
[www.novusbio.com/NBP2-81275](http://www.novusbio.com/NBP2-81275)

Updated 9/9/2025 v.20.1

Earn rewards for product reviews and publications.

Submit a publication at [www.novusbio.com/publications](http://www.novusbio.com/publications)

Submit a review at [www.novusbio.com/reviews/destination/NBP2-81275](http://www.novusbio.com/reviews/destination/NBP2-81275)



**NBP2-81275-0.05mg**

Pollen allergen Phl p 1 Antibody (Clone 25) - Azide and BSA Free

**Product Information**

<b>Unit Size</b>	0.05 mg
<b>Concentration</b>	1 mg/ml
<b>Storage</b>	Store at 4C for up to 3 months. For longer storage, aliquot and store at -20C.
<b>Clonality</b>	Monoclonal
<b>Clone</b>	Clone 25
<b>Preservative</b>	0.02% Proclin 300
<b>Isotype</b>	IgE Kappa
<b>Purity</b>	Affinity purified
<b>Buffer</b>	PBS

**Product Description**

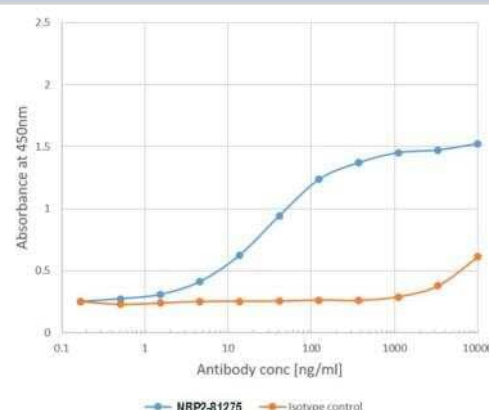
<b>Description</b>	Novus Biologicals Human Pollen allergen Phl p 1 Antibody (Clone 25) - Azide and BSA Free (NBP2-81275) is a monoclonal antibody validated for use in WB and ELISA. All Novus Biologicals antibodies are covered by our 100% guarantee.
<b>Host</b>	Human
<b>Species</b>	Plant
<b>Reactivity Notes</b>	Expected to react with Timothy-Grass (Phleum pratense).
<b>Specificity/Sensitivity</b>	This antibody binds to the Timothy grass allergen Phl p 1 and shows cotss reactivity with natural group 1 allergens from a variety of grass species such as oat, sweet vernal grass, Bermuda grass, rye grass, common reed, Kentucky blue grass, rye, wheat and maize (weak).
<b>Immunogen</b>	Recombinant Phl p 1, a grass pollen allergen.

**Product Application Details**

<b>Applications</b>	Western Blot, Dot Blot, ELISA
<b>Recommended Dilutions</b>	Western Blot, ELISA, Dot Blot
<b>Application Notes</b>	This full-length, reformatted human antibody was made using the variable domain sequences of the original Human scFv format, for improved compatibility with existing reagents, assays and techniques. This antibody binds to Phl p 1 and competes with up to 43.4% (mean 19.8%) of IgE from allergic patient serum.

**Images**

ELISA: Pollen allergen Phl p 1 Antibody (Clone 25) [NBP2-81275] - Binding curve of Pollen allergen Phl p 1 Antibody (Clone 25) [NBP2-81275] to Phl p 1 ELISA Plate coated with Phl p 1 at a concentration of 2 ug/ml. A 3-fold serial dilution from 10,000 to 0.1 ng/ml was performed using NBP2-81276. For detection, a 1:4000 dilution of HRP-labelled goat anti-human kappa antibody was used.





### **Novus Biologicals USA**

10730 E. Briarwood Avenue  
Centennial, CO 80112  
USA  
Phone: 303.730.1950  
Toll Free: 1.888.506.6887  
Fax: 303.730.1966  
nb-customerservice@bio-techne.com

### **Bio-Techne Canada**

21 Canmotor Ave  
Toronto, ON M8Z 4E6  
Canada  
Phone: 905.827.6400  
Toll Free: 855.668.8722  
Fax: 905.827.6402  
canada.inquires@bio-techne.com

### **Bio-Techne Ltd**

19 Barton Lane  
Abingdon Science Park  
Abingdon, OX14 3NB, United Kingdom  
Phone: (44) (0) 1235 529449  
Free Phone: 0800 37 34 15  
Fax: (44) (0) 1235 533420  
info.EMEA@bio-techne.com

### **General Contact Information**

www.novusbio.com  
Technical Support: nb-technical@bio-techne.com  
Orders: nb-customerservice@bio-techne.com  
General: novus@novusbio.com

### **Products Related to NBP2-81275-0.05mg**

---

G-102-C	Goat anti-Human IgG Secondary Antibody [Unconjugated]
NB7446	Goat anti-Human IgG Fc Secondary Antibody

---

### **Limitations**

This product is for research use only and is not approved for use in humans or in clinical diagnosis. Primary Antibodies are guaranteed for 1 year from date of receipt.

For more information on our 100% guarantee, please visit [www.novusbio.com/guarantee](http://www.novusbio.com/guarantee)

Earn gift cards/discounts by submitting a review: [www.novusbio.com/reviews/submit/NBP2-81275](http://www.novusbio.com/reviews/submit/NBP2-81275)

Earn gift cards/discounts by submitting a publication using this product:  
[www.novusbio.com/publications](http://www.novusbio.com/publications)

