

Product Datasheet

Fibrin beta-chain Antibody (8E5) - Chimeric - Azide and BSA Free

NBP2-81111-0.2mg

Unit Size: 0.2 mg

Store at 4C for up to 3 months. For longer storage, aliquot and store at -20C.

www.novusbio.com



technical@novusbio.com

Protocols, Publications, Related Products, Reviews, Research Tools and Images at:
www.novusbio.com/NBP2-81111

Updated 9/14/2025 v.20.1

Earn rewards for product reviews and publications.

Submit a publication at www.novusbio.com/publications

Submit a review at www.novusbio.com/reviews/destination/NBP2-81111



NBP2-81111-0.2mg

Fibrin beta-chain Antibody (8E5) - Chimeric - Azide and BSA Free

Product Information	
Unit Size	0.2 mg
Concentration	1 mg/ml
Storage	Store at 4C for up to 3 months. For longer storage, aliquot and store at -20C.
Clonality	Monoclonal
Clone	8E5
Preservative	0.02% Proclin 300
Isotype	IgG Kappa
Purity	Protein A purified
Buffer	PBS

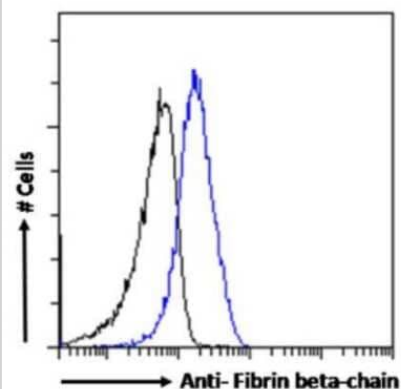
Product Description	
Description	Novus Biologicals Rabbit Fibrin beta-chain Antibody (8E5) - Chimeric - Azide and BSA Free (NBP2-81111) is a recombinant monoclonal antibody validated for use in ELISA and Flow. All Novus Biologicals antibodies are covered by our 100% guarantee.
Host	Rabbit
Gene ID	2244
Gene Symbol	FGB
Species	Human
Specificity/Sensitivity	8E5 binds to the amino-terminal region of the beta-chain of human fibrin at an epitope consisting of GHRPLDKC. Binding is possible in both the monomeric form and the polymeric form of the protein. This peptide sequence is found only in fibrin, and not in its precursor fibrinogen and so there is no cross-reactivity with fibrinogen. Fibrin is a non-globular protein which plays a role in the clotting of blood and circulates as the precursor fibrinogen. Polymerization occurs through the action of the protease thrombin, which results in the active fibrin. Fibrin polymerizes as an insoluble matrix and forms a clot along with platelets over a wound site.
Immunogen	8E5 was prepared fusing Sp2/o myeloma cells with spleen cells derived from female BALB/c mice immunized with a synthetic beta-fibrin peptide sequence GHRPLDKC conjugated to MB-KLH (maleimidobenzoylated keyhole limpet hemocyanin).

Product Application Details	
Applications	ELISA, Flow Cytometry, In vivo assay
Recommended Dilutions	Flow Cytometry, ELISA, In vivo assay
Application Notes	This chimeric rabbit antibody was made using the variable domain sequences of the original Mouse IgG1 format, for improved compatibility with existing reagents, assays and techniques. The recombinant scFv version of 8E5 retains the same antigen-binding activity of the parent antibody. 8E5 can bind to fibrin in the monomeric and polymeric form, both in vivo and ex vivo. This antibody can also be used for the immunodetection of fibrin in vivo. Standard ELISA and competitive ELISA using the epitope peptide has been conducted with both the parental antibody and the scFv.



Images

Flow Cytometry: Fibrin beta-chain Antibody (8E5) - Chimeric [NBP2-81111] - Flow-cytometry using the Fibrin beta-chain Antibody [NBP2-81111]. HepG2 cells were fixed using 2% PFA, permeabilised using 0.5% Triton and stained with anti-Fluorescein IgG antibody (isotype control, black line) or the rabbit IgG-chimeric version of 8E5 (NBP2-81111, blue line) at a dilution of 1:100 for 1h at RT. After washing, bound antibody was detected using a goat anti-rabbit IgG AlexaFluor 488 antibody at a dilution of 1:1000 and cells analyzed using a FACSCanto flow-cytometer.





Novus Biologicals USA

10730 E. Briarwood Avenue
Centennial, CO 80112
USA
Phone: 303.730.1950
Toll Free: 1.888.506.6887
Fax: 303.730.1966
nb-customerservice@bio-techne.com

Bio-Techne Canada

21 Canmotor Ave
Toronto, ON M8Z 4E6
Canada
Phone: 905.827.6400
Toll Free: 855.668.8722
Fax: 905.827.6402
canada.inquires@bio-techne.com

Bio-Techne Ltd

19 Barton Lane
Abingdon Science Park
Abingdon, OX14 3NB, United Kingdom
Phone: (44) (0) 1235 529449
Free Phone: 0800 37 34 15
Fax: (44) (0) 1235 533420
info.EMEA@bio-techne.com

General Contact Information

www.novusbio.com
Technical Support: nb-technical@bio-techne.com
Orders: nb-customerservice@bio-techne.com
General: novus@novusbio.com

Products Related to NBP2-81111-0.2mg

HAF008	Goat anti-Rabbit IgG Secondary Antibody [HRP]
NB7160	Goat anti-Rabbit IgG (H+L) Secondary Antibody [HRP]
M6000B-1	IL-6 [HRP]
DY1707	C-Reactive Protein/CRP [Biotin]

Limitations

This product is for research use only and is not approved for use in humans or in clinical diagnosis. Primary Antibodies are guaranteed for 1 year from date of receipt.

For more information on our 100% guarantee, please visit www.novusbio.com/guarantee

Earn gift cards/discounts by submitting a review: www.novusbio.com/reviews/submit/NBP2-81111

Earn gift cards/discounts by submitting a publication using this product:
www.novusbio.com/publications

