

# Product Datasheet

## EphA2 Antibody (1C1) - Azide and BSA Free NBP2-81069-0.2mg

Unit Size: 0.2 mg

Store at 4C for up to 3 months. For longer storage, aliquot and store at -20C.

[www.novusbio.com](http://www.novusbio.com)



[technical@novusbio.com](mailto:technical@novusbio.com)

Protocols, Publications, Related Products, Reviews, Research Tools and Images at:  
[www.novusbio.com/NBP2-81069](http://www.novusbio.com/NBP2-81069)

Updated 4/19/2023 v.20.1

Earn rewards for product  
reviews and publications.

Submit a publication at [www.novusbio.com/publications](http://www.novusbio.com/publications)

Submit a review at [www.novusbio.com/reviews/destination/NBP2-81069](http://www.novusbio.com/reviews/destination/NBP2-81069)



**NBP2-81069-0.2mg**

EphA2 Antibody (1C1) - Azide and BSA Free

Product Information	
Unit Size	0.2 mg
Concentration	1 mg/ml
Storage	Store at 4C for up to 3 months. For longer storage, aliquot and store at -20C.
Clonality	Monoclonal
Clone	1C1
Preservative	0.02% Proclin 300
Isotype	IgG1 Kappa
Purity	Protein A purified
Buffer	PBS

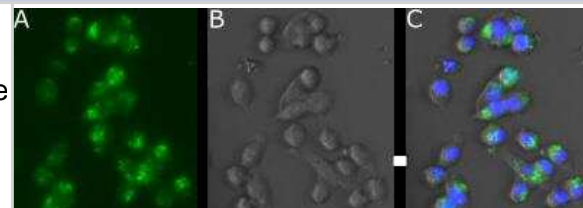
Product Description	
Host	Human
Gene ID	1969
Gene Symbol	EPHA2
Species	Human
Specificity/Sensitivity	1C1 binds specifically to the amino-terminal LBD (ligand-binding domain) region of the EphA2 ectodomain (IgG1 KD ~0.8 nM; Fab KD ~140 nM) and not to other related human Eph receptors such as EphA1, EphA2, and EphA4, or any EphB receptor family members.
Immunogen	1C1 was isolated after screening of a non-immunized human Fab phage library. Selection was based on the ability to bind soluble human recombinant EphA2 (residues 183-510). The Fab was subsequently converted to full length human IgG1.

Product Application Details	
Applications	Western Blot, ELISA, Flow Cytometry, Immunocytochemistry/Immunofluorescence, Block/Neutralize
Recommended Dilutions	Western Blot, Flow Cytometry, ELISA, Immunocytochemistry/Immunofluorescence, Block/Neutralize
Application Notes	This antibody binds to human Ephrin type-A receptor 2, a receptor tyrosine kinase that binds to membrane-bound ephrin-A ligands residing on adjacent cells, triggering contact-dependent signaling into neighboring cells. Eph2A is involved in pattern formation during development, angiogenesis and osteoblastogenesis. Eph2A has also been found to be expressed in a variety of cancers. This antibody acts as an agonist of Eph2A signaling. The agonist properties of 1C1 is due to ligand mimicry by VDR3. After cell binding, the antibody is able to induce rapid tyrosine phosphorylation, internalization, and degradation of the EphA2 receptor.

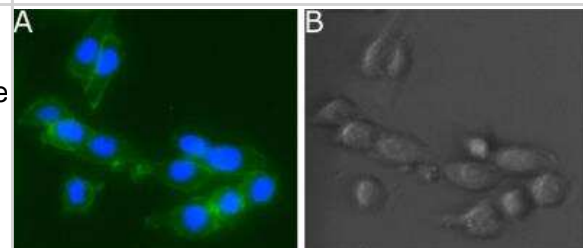


## Images

Immunocytochemistry/Immunofluorescence: EphA2 Antibody (1C1) [NBP2-81069] - Live murine Lewis Lung cells were stained with the chimeric mouse IgG1 version of 1C1 at 2 ug/ml and a donkey anti-mouse IgG-AF488 at 20 ug/ml for 90 mins. Nuclei stained with Hoechst. Cells captured at 20x magnification. Panel A shows the AF488 signal, panel B the DIC image and panel C a merge of fluorescence (AF488 + Hoechst) with the DIC image. In this live sample, antibody internalisation is observed.



Immunocytochemistry/Immunofluorescence: EphA2 Antibody (1C1) [NBP2-81069] - Fixed murine Lewis Lung cells were stained with the chimeric mouse IgG1 version of 1C1 at 2 ug/ml and a donkey anti-mouse IgG-AF488 at 20 ug/ml for 90 mins. Nuclei stained with Hoechst. Cells captured at 20x magnification. Panel A shows a merge of the fluorescence channels, whilst panel B shows the DIC image. In this fixed sample the cell membrane is clearly outlined.





### **Novus Biologicals USA**

10730 E. Briarwood Avenue  
Centennial, CO 80112  
USA  
Phone: 303.730.1950  
Toll Free: 1.888.506.6887  
Fax: 303.730.1966  
nb-customerservice@bio-techne.com

### **Bio-Techne Canada**

21 Canmotor Ave  
Toronto, ON M8Z 4E6  
Canada  
Phone: 905.827.6400  
Toll Free: 855.668.8722  
Fax: 905.827.6402  
canada.inquires@bio-techne.com

### **Bio-Techne Ltd**

19 Barton Lane  
Abingdon Science Park  
Abingdon, OX14 3NB, United Kingdom  
Phone: (44) (0) 1235 529449  
Free Phone: 0800 37 34 15  
Fax: (44) (0) 1235 533420  
info.EMEA@bio-techne.com

### **General Contact Information**

www.novusbio.com  
Technical Support: nb-technical@bio-techne.com  
Orders: nb-customerservice@bio-techne.com  
General: novus@novusbio.com

### **Products Related to NBP2-81069-0.2mg**

---

G-102-C	Goat anti-Human IgG Secondary Antibody [Unconjugated]
NB7446	Goat anti-Human IgG Fc Secondary Antibody
NBP3-06872-0.1mg	Human IgG1 Kappa Isotype Control
DVE00	VEGF [HRP]

---

### **Limitations**

This product is for research use only and is not approved for use in humans or in clinical diagnosis. Primary Antibodies are guaranteed for 1 year from date of receipt.

For more information on our 100% guarantee, please visit [www.novusbio.com/guarantee](http://www.novusbio.com/guarantee)

Earn gift cards/discounts by submitting a review: [www.novusbio.com/reviews/submit/NBP2-81069](http://www.novusbio.com/reviews/submit/NBP2-81069)

Earn gift cards/discounts by submitting a publication using this product:  
[www.novusbio.com/publications](http://www.novusbio.com/publications)

