

# Product Datasheet

## beta Tubulin Antibody (S11B) [mFluor Violet 610 SE] NBP2-81064MFV610

Unit Size: 0.1 ml

Store at 4C in the dark.

[www.novusbio.com](http://www.novusbio.com)



[technical@novusbio.com](mailto:technical@novusbio.com)

Protocols, Publications, Related Products, Reviews, Research Tools and Images at:  
[www.novusbio.com/NBP2-81064MFV610](http://www.novusbio.com/NBP2-81064MFV610)

Updated 9/20/2023 v.20.1

Earn rewards for product  
reviews and publications.

Submit a publication at [www.novusbio.com/publications](http://www.novusbio.com/publications)

Submit a review at [www.novusbio.com/reviews/destination/NBP2-81064MFV610](http://www.novusbio.com/reviews/destination/NBP2-81064MFV610)



**NBP2-81064MFV610**

beta Tubulin Antibody (S11B) [mFluor Violet 610 SE]

**Product Information**

<b>Unit Size</b>	0.1 ml
<b>Concentration</b>	Please see the vial label for concentration. If unlisted please contact technical services.
<b>Storage</b>	Store at 4C in the dark.
<b>Clonality</b>	Monoclonal
<b>Clone</b>	S11B
<b>Preservative</b>	0.05% Sodium Azide
<b>Isotype</b>	IgG Lambda
<b>Conjugate</b>	mFluor Violet 610 SE
<b>Purity</b>	Protein A purified
<b>Buffer</b>	50mM Sodium Borate

**Product Description**

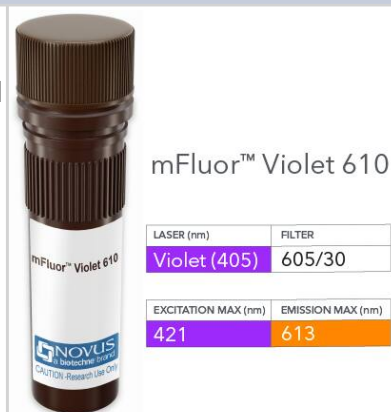
<b>Host</b>	Rabbit
<b>Gene ID</b>	203068
<b>Gene Symbol</b>	TUBB
<b>Species</b>	Human
<b>Specificity/Sensitivity</b>	Binds specifically to human beta Tubulin (no crossreactivity with alpha-tubulin).
<b>Immunogen</b>	Human MBP (microtubule-binding protein).

**Product Application Details**

<b>Applications</b>	Western Blot, ELISA, Flow Cytometry, Immunocytochemistry/Immunofluorescence, Immunohistochemistry, Immunohistochemistry-Paraffin
<b>Recommended Dilutions</b>	Western Blot, Flow Cytometry, ELISA, Immunohistochemistry, Immunocytochemistry/Immunofluorescence, Immunohistochemistry-Paraffin
<b>Application Notes</b>	Optimal dilution of this antibody should be experimentally determined.

**Images**

beta Tubulin Antibody (S11B) [mFluor Violet 610 SE] [NBP2-81064MFV610] - Vial of mFluor Violet 610 conjugated antibody. mFluor Violet 610 is optimally excited at 421 nm by the Violet laser (405 nm) and has an emission maximum of 613 nm.





### **Novus Biologicals USA**

10730 E. Briarwood Avenue  
Centennial, CO 80112  
USA  
Phone: 303.730.1950  
Toll Free: 1.888.506.6887  
Fax: 303.730.1966  
nb-customerservice@bio-techne.com

### **Bio-Techne Canada**

21 Canmotor Ave  
Toronto, ON M8Z 4E6  
Canada  
Phone: 905.827.6400  
Toll Free: 855.668.8722  
Fax: 905.827.6402  
canada.inquires@bio-techne.com

### **Bio-Techne Ltd**

19 Barton Lane  
Abingdon Science Park  
Abingdon, OX14 3NB, United Kingdom  
Phone: (44) (0) 1235 529449  
Free Phone: 0800 37 34 15  
Fax: (44) (0) 1235 533420  
info.EMEA@bio-techne.com

### **General Contact Information**

[www.novusbio.com](http://www.novusbio.com)  
Technical Support: nb-technical@bio-techne.com  
Orders: nb-customerservice@bio-techne.com  
General: novus@novusbio.com

### **Products Related to NBP2-81064MFV610**

---

NB600-936PEP	beta Tubulin Antibody Blocking Peptide
DIP100	CXCL10/IP-10/CRG-2 [HRP]
NB100-56459PEP	beta Tubulin Antibody Blocking Peptide
NB600-501	beta-Actin Antibody (AC-15)

---

### **Limitations**

This product is for research use only and is not approved for use in humans or in clinical diagnosis. Primary Antibodies are guaranteed for 1 year from date of receipt.

For more information on our 100% guarantee, please visit [www.novusbio.com/guarantee](http://www.novusbio.com/guarantee)

Earn gift cards/discounts by submitting a review: [www.novusbio.com/reviews/submit/NBP2-81064MFV610](http://www.novusbio.com/reviews/submit/NBP2-81064MFV610)

Earn gift cards/discounts by submitting a publication using this product:  
[www.novusbio.com/publications](http://www.novusbio.com/publications)

