

Product Datasheet

beta Tubulin Antibody (S11B) - Chimeric - Azide and BSA Free NBP2-81064-0.2mg

Unit Size: 0.2 mg

Store at 4C for up to 3 months. For longer storage, aliquot and store at -20C.

www.novusbio.com



technical@novusbio.com

Protocols, Publications, Related Products, Reviews, Research Tools and Images at:
www.novusbio.com/NBP2-81064

Updated 10/19/2023 v.20.1

Earn rewards for product
reviews and publications.

Submit a publication at www.novusbio.com/publications

Submit a review at www.novusbio.com/reviews/destination/NBP2-81064



NBP2-81064-0.2mg

beta Tubulin Antibody (S11B) - Chimeric - Azide and BSA Free

Product Information	
Unit Size	0.2 mg
Concentration	1 mg/ml
Storage	Store at 4C for up to 3 months. For longer storage, aliquot and store at -20C.
Clonality	Monoclonal
Clone	S11B
Preservative	0.02% Proclin 300
Isotype	IgG Lambda
Purity	Protein A purified
Buffer	PBS

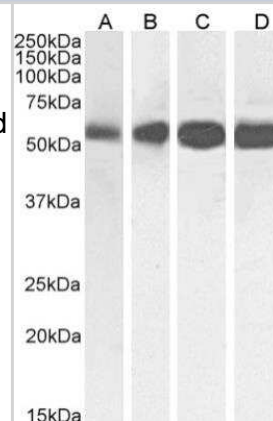
Product Description	
Host	Rabbit
Gene ID	203068
Gene Symbol	TUBB
Species	Human
Specificity/Sensitivity	Binds specifically to human beta Tubulin (no crossreactivity with alpha-tubulin).
Immunogen	Human MBP (microtubule-binding protein).

Product Application Details	
Applications	Western Blot, ELISA, Flow Cytometry, Immunocytochemistry/ Immunofluorescence, Immunohistochemistry, Immunohistochemistry-Paraffin
Recommended Dilutions	Western Blot, Flow Cytometry, ELISA, Immunohistochemistry, Immunocytochemistry/ Immunofluorescence, Immunohistochemistry-Paraffin
Application Notes	This full-length, chimeric rabbit antibody was made using the variable domain sequences of the original Human scFv format, for improved compatibility with existing reagents, assays and techniques. This antibody binds to beta-tubulin. Tubulin is the major constituent of microtubules. The beta-chain has an exchangeable GTP-binding site.



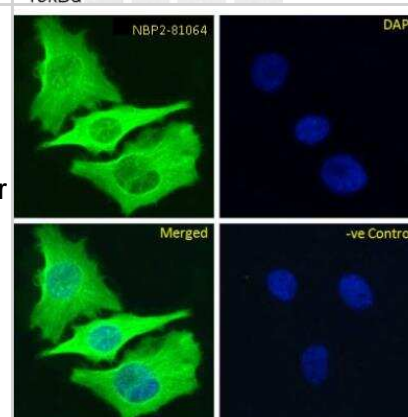
Images

Western Blot: beta Tubulin Antibody (S11B) [NBP2-81064] - Western Blot using anti-Beta-Tubulin antibody (S11B) [NBP2-81064]. HeLa (A), A431 (B), HEK293 (C) and MCF-7 (D) cell lysate samples (35ug protein in RIPA buffer) were resolved on a 10% SDS PAGE gel and blots probed with the chimeric rabbit version of S11B [NBP2-81064] at 0.01 ug/ml before detection using an anti-rabbit secondary antibody. A primary incubation of 1h was used and protein was detected by chemiluminescence. The expected band size for Beta-Tubulin is ~54kDa. NBP2-81064 successfully detected human Beta-Tubulin in HeLa, A431, HEK293 and MCF-7 cell lysate samples.

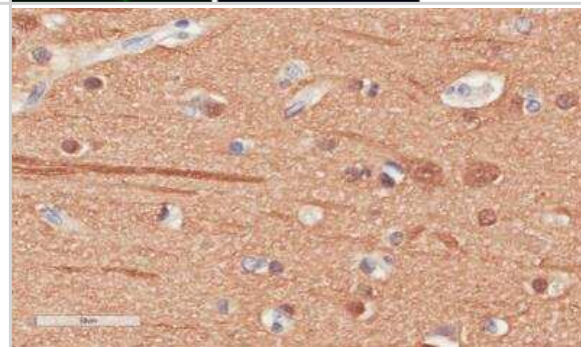


Immunocytochemistry/Immunofluorescence: beta Tubulin Antibody (S11B) [NBP2-81064] - Immunofluorescence staining of fixed HeLa cells with anti-Beta-tubulin antibody (S11B) [NBP2-81064].

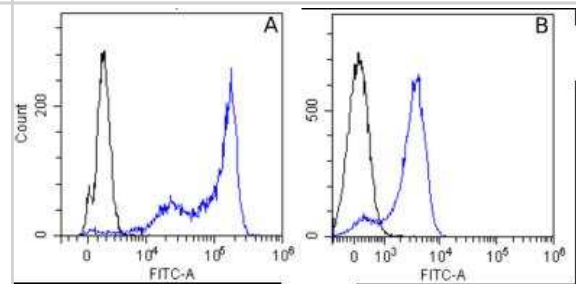
Immunofluorescence analysis of paraformaldehyde fixed HeLa cells, permeabilized with 0.15% Triton stained with the chimeric rabbit IgG version of S11B [NBP2-81064] at 10 ug/ml for 1h followed by Alexa Fluor 488 secondary antibody (1 ug/ml), showing cytoplasmic staining. The nuclear stain is DAPI (blue). Panels show from left-right, top-bottom NBP2-81064, DAPI, merged channels and a negative control. The negative control was stained with unimmunized rabbit IgG followed by Alexa Fluor 488 secondary antibody.



Immunohistochemistry-Paraffin: beta Tubulin Antibody (S11B) [NBP2-81064] - Immunohistochemical staining of human cerebral cortex tissue using [NBP2-81064]. Anti-Beta Tubulin staining of paraffin embedded human cerebral cortex tissue using the rabbit-chimeric version of S11B [NBP2-81064]. Antigen retrieval was achieved by microwaving in citrate buffer (pH6), followed by blocking with protein block serum-free buffer. Primary antibody incubation with NBP2-81064 was carried out at 4 ug/ml for 30 minutes. Samples were then incubated with an anti-rabbit IgG HRP secondary antibody for 20 mins followed by DAB (3,3'-diaminobenzidine), and counter-staining with haematoxylin. Staining of neuronal cell bodies and their processes may be observed. Recommended concentration, 2-4 ug/ml.



Flow Cytometry: beta Tubulin Antibody (S11B) [NBP2-81064] - Flow-cytometry using the anti-Beta Tubulin (S11B) [NBP2-81064]. MCF-7 (A) and HeLa (B) cells were stained with unimmunized rabbit IgG antibody (black line) or the rabbit-chimeric version of S11B (NBP2-81064, blue line) at a concentration of 10 ug/ml for 30 mins at RT. After washing, bound antibody was detected using anti-rabbit IgG JK (FITC-conjugate) antibody at 2 ug/ml and cells analyzed on a FACSCanto flow-cytometer.





Novus Biologicals USA

10730 E. Briarwood Avenue
Centennial, CO 80112
USA
Phone: 303.730.1950
Toll Free: 1.888.506.6887
Fax: 303.730.1966
nb-customerservice@bio-techne.com

Bio-Techne Canada

21 Canmotor Ave
Toronto, ON M8Z 4E6
Canada
Phone: 905.827.6400
Toll Free: 855.668.8722
Fax: 905.827.6402
canada.inquires@bio-techne.com

Bio-Techne Ltd

19 Barton Lane
Abingdon Science Park
Abingdon, OX14 3NB, United Kingdom
Phone: (44) (0) 1235 529449
Free Phone: 0800 37 34 15
Fax: (44) (0) 1235 533420
info.EMEA@bio-techne.com

General Contact Information

www.novusbio.com
Technical Support: nb-technical@bio-techne.com
Orders: nb-customerservice@bio-techne.com
General: novus@novusbio.com

Products Related to NBP2-81064-0.2mg

HAF008	Goat anti-Rabbit IgG Secondary Antibody [HRP]
NB7160	Goat anti-Rabbit IgG (H+L) Secondary Antibody [HRP]
NB600-936PEP	beta Tubulin Antibody Blocking Peptide
DIP100	CXCL10/IP-10/CRG-2 [HRP]

Limitations

This product is for research use only and is not approved for use in humans or in clinical diagnosis. Primary Antibodies are guaranteed for 1 year from date of receipt.

For more information on our 100% guarantee, please visit www.novusbio.com/guarantee

Earn gift cards/discounts by submitting a review: www.novusbio.com/reviews/submit/NBP2-81064

Earn gift cards/discounts by submitting a publication using this product:
www.novusbio.com/publications

