

# Product Datasheet

## WT1 Antibody (6F-H2) - Azide and BSA Free NBP2-81012

Unit Size: 0.1 ml

Aliquot and store at -20C or -80C. Avoid freeze-thaw cycles.

[www.novusbio.com](http://www.novusbio.com)



[technical@novusbio.com](mailto:technical@novusbio.com)

Protocols, Publications, Related Products, Reviews, Research Tools and Images at:  
[www.novusbio.com/NBP2-81012](http://www.novusbio.com/NBP2-81012)

Updated 4/13/2025 v.20.1

Earn rewards for product  
reviews and publications.

Submit a publication at [www.novusbio.com/publications](http://www.novusbio.com/publications)

Submit a review at [www.novusbio.com/reviews/destination/NBP2-81012](http://www.novusbio.com/reviews/destination/NBP2-81012)



**NBP2-81012**

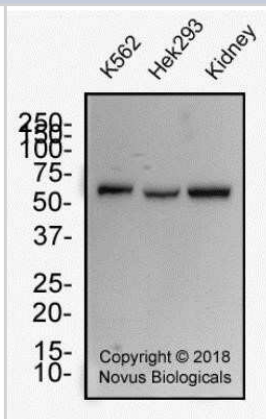
WT1 Antibody (6F-H2) - Azide and BSA Free

Product Information	
Unit Size	0.1 ml
Concentration	1 mg/ml
Storage	Aliquot and store at -20C or -80C. Avoid freeze-thaw cycles.
Clonality	Monoclonal
Clone	6F-H2
Preservative	No Preservative
Isotype	IgG1 Kappa
Purity	Protein G purified
Buffer	PBS
Target Molecular Weight	55 kDa
Product Description	
Host	Mouse
Gene ID	7490
Gene Symbol	WT1
Species	Human
Immunogen	Human recombinant Wilms Tumor 1 protein (WT1) (residues 1-181). [Swiss-Prot: P19544]
Product Application Details	
Applications	Western Blot, Simple Western, Immunocytochemistry/ Immunofluorescence, Immunohistochemistry, Immunohistochemistry-Frozen, Immunohistochemistry-Paraffin, Immunoprecipitation
Recommended Dilutions	Western Blot 2 ug/ml, Simple Western 1:50, Immunohistochemistry 1:400, Immunocytochemistry/ Immunofluorescence reported in scientific literature (PMID 25576053), Immunoprecipitation 2-10 ug/ml lysate, Immunohistochemistry-Paraffin 1:400, Immunohistochemistry-Frozen 1:400
Application Notes	In Western blot, a doublet is observed at approx. 55 kDa. Prior to immunostaining paraffin tissues, antigen retrieval with sodium citrate buffer (pH 6.0) is recommended. In immunostaining, this target may be found localized to nucleus/nucleolus and cytoplasm of cells (WT1 shuttles between nucleus and cytoplasm - PMID: 14681305). In Simple Western only 10 - 15 uL of the recommended dilution is used per data point. See <a href="#">Simple Western Antibody Database</a> for Simple Western validation: antibody dilution of 1:50. Separated by Size-Wes, Sally Sue/Peggy Sue.

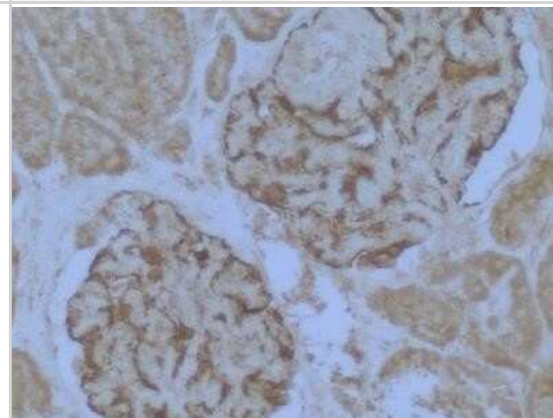


## Images

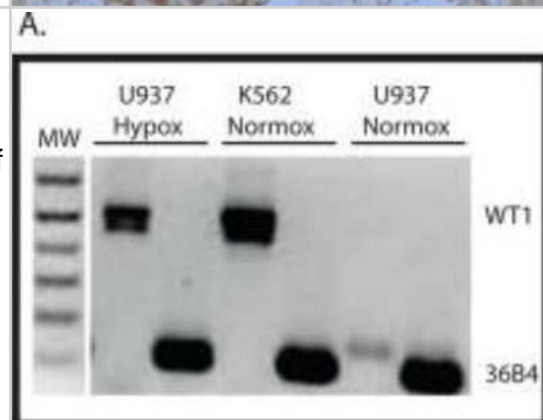
**Western Blot: WT1 Antibody (6F-H2) - Azide and BSA Free [NBP2-81012]** - Whole cell protein from human K562, HEK293 and kidney tissue was separated on a 12% gel by SDS-PAGE, transferred to PVDF membrane and blocked in 5% non-fat milk in TBST. The membrane was probed with 2.0 ug/ml anti-WT1 in block buffer and detected with an anti-mouse HRP secondary antibody using chemiluminescence. Image from the standard format of this antibody.



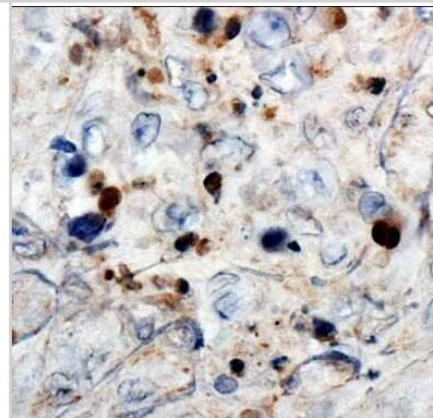
**Immunohistochemistry: WT1 Antibody (6F-H2) - Azide and BSA Free [NBP2-81012]** - Staining of human kidney glomerulus tissue. Heat mediated antigen retrieval was performed by heating in citrate buffer (pH 6) at 95C for 20 minutes. Image from verified customer review. Image from the standard format of this antibody.



**Western Blot: WT1 Antibody (6F-H2) - Azide and BSA Free [NBP2-81012]** - Hypomethylation of the Intron 1 CpG island results in WT1 expression. RNA was isolated from K562 and U937 cells growing under atmospheric conditions (Normox) and from U937 cells growing in 1% O<sub>2</sub> (Hypox) and was analyzed by RT-PCR using primers that span exon 5 of the WT1 mRNA. Ribosomal RNA 36B4 is used as a positive control, and molecular weight markers (MW) are shown. Image collected and cropped by CiteAb from the following publication (<https://dx.plos.org/10.1371/journal.pone.0119837>), licensed under a CC-BY license. Image from the standard format of this antibody.



**Immunohistochemistry: WT1 Antibody (6F-H2) - Azide and BSA Free [NBP2-81012]** - Analysis of Wilms Tumor 1 in human renal cancer using DAB with hematoxylin counterstain. Image from the standard format of this antibody.



Simple Western: WT1 Antibody (6F-H2) - Azide and BSA Free [NBP2-81012] - Lane view shows a specific band for WT1 in 0.5 mg/ml of Hek293 lysate. This experiment was performed under reducing conditions using the 12-230 kDa separation system. Image from the standard format of this antibody.





### **Novus Biologicals USA**

10730 E. Briarwood Avenue  
Centennial, CO 80112  
USA  
Phone: 303.730.1950  
Toll Free: 1.888.506.6887  
Fax: 303.730.1966  
nb-customerservice@bio-techne.com

### **Bio-Techne Canada**

21 Canmotor Ave  
Toronto, ON M8Z 4E6  
Canada  
Phone: 905.827.6400  
Toll Free: 855.668.8722  
Fax: 905.827.6402  
canada.inquires@bio-techne.com

### **Bio-Techne Ltd**

19 Barton Lane  
Abingdon Science Park  
Abingdon, OX14 3NB, United Kingdom  
Phone: (44) (0) 1235 529449  
Free Phone: 0800 37 34 15  
Fax: (44) (0) 1235 533420  
info.EMEA@bio-techne.com

### **General Contact Information**

[www.novusbio.com](http://www.novusbio.com)  
Technical Support: nb-technical@bio-techne.com  
Orders: nb-customerservice@bio-techne.com  
General: novus@novusbio.com

### **Products Related to NBP2-81012**

---

HAF007	Goat anti-Mouse IgG Secondary Antibody [HRP]
NB720-B	Rabbit anti-Mouse IgG (H+L) Secondary Antibody [Biotin]
NBP1-43319-0.5mg	Mouse IgG1 Kappa Isotype Control (P3.6.2.8.1)
H00007490-Q01-10ug	Recombinant Human WT1 GST (N-Term) Protein

---

### **Limitations**

This product is for research use only and is not approved for use in humans or in clinical diagnosis. Primary Antibodies are guaranteed for 1 year from date of receipt.

For more information on our 100% guarantee, please visit [www.novusbio.com/guarantee](http://www.novusbio.com/guarantee)

Earn gift cards/discounts by submitting a review: [www.novusbio.com/reviews/submit/NBP2-81012](http://www.novusbio.com/reviews/submit/NBP2-81012)

Earn gift cards/discounts by submitting a publication using this product:  
[www.novusbio.com/publications](http://www.novusbio.com/publications)

