

# Product Datasheet

## SREBP1 Antibody (2A4) - Azide and BSA Free NBP2-80959

Unit Size: 0.1 ml

Store at 4C short term. Aliquot and store at -20C long term. Avoid freeze-thaw cycles.

[www.novusbio.com](http://www.novusbio.com)



[technical@novusbio.com](mailto:technical@novusbio.com)

Protocols, Publications, Related Products, Reviews, Research Tools and Images at:  
[www.novusbio.com/NBP2-80959](http://www.novusbio.com/NBP2-80959)

Updated 2/17/2025 v.20.1

Earn rewards for product  
reviews and publications.

Submit a publication at [www.novusbio.com/publications](http://www.novusbio.com/publications)

Submit a review at [www.novusbio.com/reviews/destination/NBP2-80959](http://www.novusbio.com/reviews/destination/NBP2-80959)

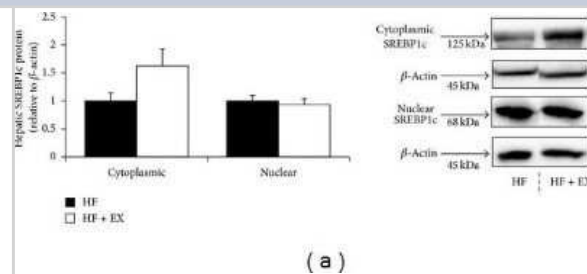


**NBP2-80959****SREBP1 Antibody (2A4) - Azide and BSA Free**

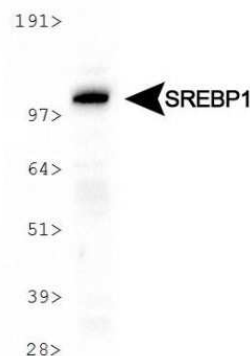
<b>Product Information</b>	
<b>Unit Size</b>	0.1 ml
<b>Concentration</b>	1 mg/ml
<b>Storage</b>	Store at 4C short term. Aliquot and store at -20C long term. Avoid freeze-thaw cycles.
<b>Clonality</b>	Monoclonal
<b>Clone</b>	2A4
<b>Preservative</b>	No Preservative
<b>Isotype</b>	IgG1 Kappa
<b>Purity</b>	Protein G purified
<b>Buffer</b>	PBS
<b>Product Description</b>	
<b>Host</b>	Mouse
<b>Gene ID</b>	6720
<b>Gene Symbol</b>	SREBF1
<b>Species</b>	Human, Mouse, Rat, Canine, Chicken, Hamster, Monkey, Golden Syrian Hamster
<b>Reactivity Notes</b>	Canine reactivity reported in scientific literature (PMID: 23720350). Hamster reactivity reported in scientific literature (PMID: 24393244). Chicken reactivity reported in multiple pieces scientific literature. Monkey reactivity reported in scientific literature (PMID: 26437365).
<b>Immunogen</b>	6 His-tag fusion protein of human SREBP1 corresponding to amino acids 301-407. [UniProt# P36956]
<b>Product Application Details</b>	
<b>Applications</b>	Western Blot, Simple Western, Immunohistochemistry, Knockout Validated
<b>Recommended Dilutions</b>	Western Blot 1-2ug/ml, Simple Western 1:12.5, Immunohistochemistry, Knockout Validated
<b>Application Notes</b>	<p>This SREBP1 (clone 2A4) antibody is useful for WB where a band can be seen at 125 kDa (precursor) and additional bands may be seen at 60-70 kDa (cleaved).</p> <p>In Simple Western only 10 - 15 uL of the recommended dilution is used per data point.</p> <p>See <a href="#">Simple Western Antibody Database</a> for Simple Western validation: antibody dilution of 1:12.5. Separated by Size-Wes, Sally Sue/Peggy Sue.</p>

## Images

Western Blot: SREBP1 Antibody (2A4) - Azide and BSA Free [NBP2-80959] - Hepatic SREBP1c and SREBP2 protein abundance in C57BL/6 mice assigned to a high-fat (HF) or a high-fat/exercise (HF + EX) group for 8 weeks. Cytosolic and nuclear SREBP1c abundance. Image collected and cropped by CiteAb from the following publication (<https://www.hindawi.com/journals/jl/2013/908048/>), licensed under a CC-BY license. Image from the standard format of this antibody.



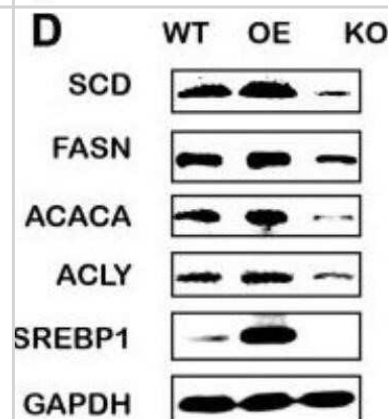
Western Blot: SREBP1 Antibody (2A4) - Azide and BSA Free [NBP2-80959] - Analysis of whole cell lysate from HeLa cells showing a single specific band for the expression of SREBP1 precursor protein (~120 kDa). Image from the standard format of this antibody.



Simple Western: SREBP1 Antibody (2A4) - Azide and BSA Free [NBP2-80959] - Lane view shows a specific band for SREBP1 in 1.0 mg/ml of HeLa lysate. This experiment was performed under reducing conditions using the 12-230 kDa separation system. Image from the standard format of this antibody.



Western Blot: SREBP1 Antibody (2A4) - Azide and BSA Free [NBP2-80959] - KO and OE of SREBP1 influenced lipid metabolism in Bel-7402 cells. The protein level of lipid-associated genes in SREBP1-KO, SREBP1-OE, and WT Bel-7402 cells. Data were expressed as mean  $\pm$  standard error of the mean. \* $P < 0.05$ , \*\* $P < 0.01$ , and \*\*\* $P < 0.001$  vs. WT group, respectively. Image from the standard format of this antibody.





### **Novus Biologicals USA**

10730 E. Briarwood Avenue  
Centennial, CO 80112  
USA  
Phone: 303.730.1950  
Toll Free: 1.888.506.6887  
Fax: 303.730.1966  
nb-customerservice@bio-techne.com

### **Bio-Techne Canada**

21 Canmotor Ave  
Toronto, ON M8Z 4E6  
Canada  
Phone: 905.827.6400  
Toll Free: 855.668.8722  
Fax: 905.827.6402  
canada.inquires@bio-techne.com

### **Bio-Techne Ltd**

19 Barton Lane  
Abingdon Science Park  
Abingdon, OX14 3NB, United Kingdom  
Phone: (44) (0) 1235 529449  
Free Phone: 0800 37 34 15  
Fax: (44) (0) 1235 533420  
info.EMEA@bio-techne.com

### **General Contact Information**

www.novusbio.com  
Technical Support: nb-technical@bio-techne.com  
Orders: nb-customerservice@bio-techne.com  
General: novus@novusbio.com

### **Products Related to NBP2-80959**

---

HAF007	Goat anti-Mouse IgG Secondary Antibody [HRP]
NB720-B	Rabbit anti-Mouse IgG (H+L) Secondary Antibody [Biotin]
NBP1-43319-0.5mg	Mouse IgG1 Kappa Isotype Control (P3.6.2.8.1)
NB100-2215PEP	SREBP1 Antibody Blocking Peptide

---

### **Limitations**

This product is for research use only and is not approved for use in humans or in clinical diagnosis. Primary Antibodies are guaranteed for 1 year from date of receipt.

For more information on our 100% guarantee, please visit [www.novusbio.com/guarantee](http://www.novusbio.com/guarantee)

Earn gift cards/discounts by submitting a review: [www.novusbio.com/reviews/submit/NBP2-80959](http://www.novusbio.com/reviews/submit/NBP2-80959)

Earn gift cards/discounts by submitting a publication using this product:  
[www.novusbio.com/publications](http://www.novusbio.com/publications)

