

# Product Datasheet

## SLC31A1/CTR1 Antibody (5E6.1B4) - Azide and BSA Free NBP2-80951

Unit Size: 0.1 mg

Store at 4C short term. Aliquot and store at -20C long term. Avoid freeze-thaw cycles.

[www.novusbio.com](http://www.novusbio.com)



[technical@novusbio.com](mailto:technical@novusbio.com)

Protocols, Publications, Related Products, Reviews, Research Tools and Images at:  
[www.novusbio.com/NBP2-80951](http://www.novusbio.com/NBP2-80951)

Updated 12/3/2020 v.20.1

Earn rewards for product  
reviews and publications.

Submit a publication at [www.novusbio.com/publications](http://www.novusbio.com/publications)

Submit a review at [www.novusbio.com/reviews/destination/NBP2-80951](http://www.novusbio.com/reviews/destination/NBP2-80951)



**NBP2-80951**

SLC31A1/CTR1 Antibody (5E6.1B4) - Azide and BSA Free

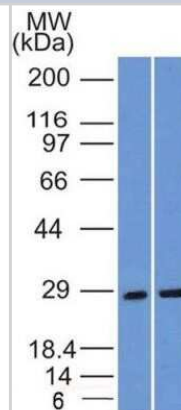
Product Information	
Unit Size	0.1 mg
Concentration	1 mg/ml
Storage	Store at 4C short term. Aliquot and store at -20C long term. Avoid freeze-thaw cycles.
Clonality	Monoclonal
Clone	5E6.1B4
Preservative	No Preservative
Isotype	IgG2b Kappa
Purity	Protein G purified
Buffer	PBS

Product Description	
Host	Mouse
Gene ID	1317
Gene Symbol	SLC31A1
Species	Human, Mouse
Immunogen	Two synthetic peptides made to internal sequences of human SLC31A1/CTR1 protein (sequences found between amino acids 50-150) [UniProt# O15431]

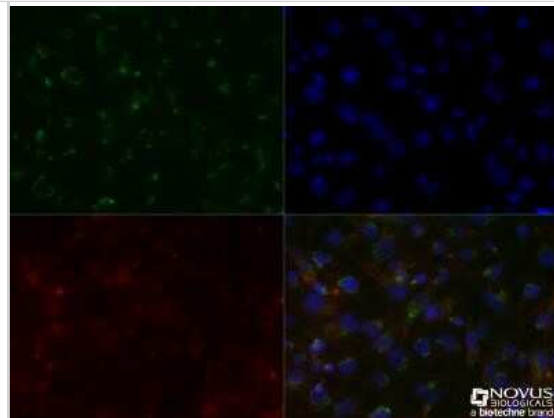
Product Application Details	
Applications	Western Blot, Immunocytochemistry/ Immunofluorescence, Immunohistochemistry, Immunohistochemistry-Paraffin
Recommended Dilutions	Western Blot 2 ug/ml, Immunohistochemistry 5 ug/ml, Immunocytochemistry/ Immunofluorescence 0.0763888888888889, Immunohistochemistry-Paraffin 5 ug/ml

**Images**

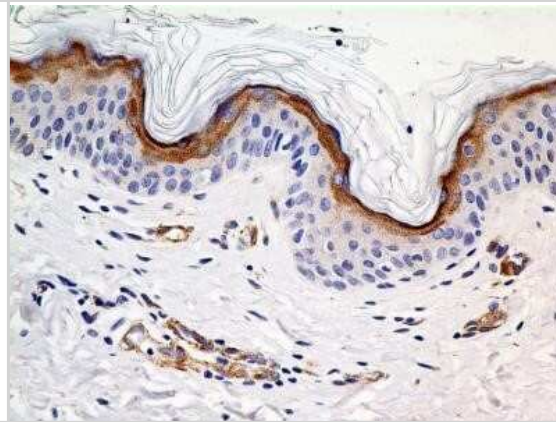
Western Blot: SLC31A1/CTR1 Antibody (5E6.1B4) - Azide and BSA Free [NBP2-80951] - Analysis of SLC31A1/CTR1 in MCF7 and HeLa at 2 ug/ml. Image from the standard format of this antibody.



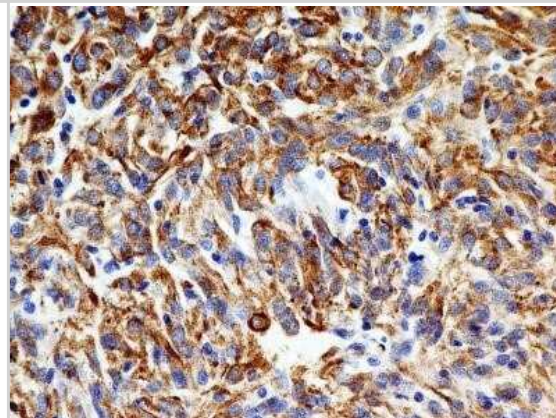
Immunocytochemistry/Immunofluorescence: SLC31A1/CTR1 Antibody (5E6.1B4) - Azide and BSA Free [NBP2-80951] - HepG2 cells were fixed for 10 minutes using 10% formalin and then permeabilized for 5 minutes using 1X TBS + 0.5% Triton X-100. The cells were incubated with anti SLC31A1/CTR1 (5E6.1B4) NBP2-36573 at a 1:50 dilution overnight at 4C and detected with an anti-mouse DyLight 488 (Green) at a 1:500 dilution. Actin was detected with Phalloidin 568 (Red) at a 1:200 dilution. Nuclei were counterstained with DAPI (Blue). Cells were imaged using a 40X objective. Image from the standard format of this antibody.



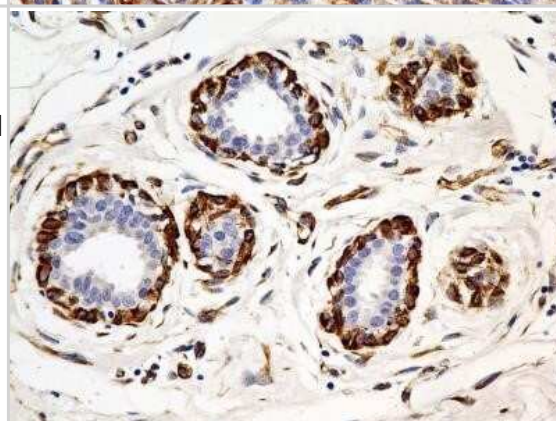
Immunohistochemistry: SLC31A1/CTR1 Antibody (5E6.1B4) - Azide and BSA Free [NBP2-80951] - Analysis of a FFPE tissue section of normal skin from a human breast cancer patient (NBP2-30234) using purified CTR1/SLC31A1 antibody clone 5E6.1B4 at 5 ug/ml concentration. The antibody developed a strong cytoplasmic staining in the outer layer of stratu



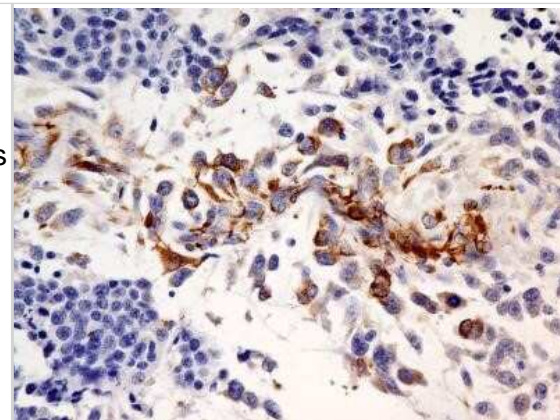
Immunohistochemistry-Paraffin: SLC31A1/CTR1 Antibody (5E6.1B4) - Azide and BSA Free [NBP2-80951] - Aanalysis of a FFPE tissue section of human small bowel malignant stromal tumor (NBP2-30234) using purified CTR1/SLC31A1 antibody clone 5E6.1B4 at 5 ug/ml concentration. The cancer cells developed moderate to strong positivity for CTR1/SLC31A1 protein. Im



Immunohistochemistry-Paraffin: SLC31A1/CTR1 Antibody (5E6.1B4) - Azide and BSA Free [NBP2-80951] - Analysis of a FFPE tissue section of normal breast tissue from a human breast cancer patient (NBP2-30234) using purified CTR1/SLC31A1 antibody clone 5E6.1B4 at 5 ug/ml concentration. The antibody generated a very strong cytoplasmic staining in the myo-epi



Immunohistochemistry: SLC31A1/CTR1 Antibody (5E6.1B4) - Azide and BSA Free [NBP2-80951] - Analysis of a formalin fixed and paraffin embedded tissue section of human urinary bladder transitional cell carcinoma (NBP2-30234) using purified CTR1/SLC31A1 antibody clone 5E6.1B4 at 5 ug/ml concentration. Image from the standard format of this antibody





### Novus Biologicals USA

10730 E. Briarwood Avenue  
Centennial, CO 80112  
USA  
Phone: 303.730.1950  
Toll Free: 1.888.506.6887  
Fax: 303.730.1966  
nb-customerservice@bio-techne.com

### Bio-Techne Canada

21 Canmotor Ave  
Toronto, ON M8Z 4E6  
Canada  
Phone: 905.827.6400  
Toll Free: 855.668.8722  
Fax: 905.827.6402  
canada.inquires@bio-techne.com

### Bio-Techne Ltd

19 Barton Lane  
Abingdon Science Park  
Abingdon, OX14 3NB, United Kingdom  
Phone: (44) (0) 1235 529449  
Free Phone: 0800 37 34 15  
Fax: (44) (0) 1235 533420  
info.EMEA@bio-techne.com

### General Contact Information

www.novusbio.com  
Technical Support: nb-technical@bio-techne.com  
Orders: nb-customerservice@bio-techne.com  
General: novus@novusbio.com

### Products Related to NBP2-80951

---

HAF007	Goat anti-Mouse IgG Secondary Antibody [HRP]
NB720-B	Rabbit anti-Mouse IgG (H+L) Secondary Antibody [Biotin]
NBP1-43317-0.5mg	Mouse IgG2b Kappa Light Chain Isotype Control (MG2b)
NB100-402PEP	SLC31A1/CTR1 Antibody Blocking Peptide

---

### Limitations

This product is for research use only and is not approved for use in humans or in clinical diagnosis. Primary Antibodies are guaranteed for 1 year from date of receipt.

For more information on our 100% guarantee, please visit [www.novusbio.com/guarantee](http://www.novusbio.com/guarantee)

Earn gift cards/discounts by submitting a review: [www.novusbio.com/reviews/submit/NBP2-80951](http://www.novusbio.com/reviews/submit/NBP2-80951)

Earn gift cards/discounts by submitting a publication using this product:  
[www.novusbio.com/publications](http://www.novusbio.com/publications)

