

# Product Datasheet

## Rad21 Antibody (CM110-2C10) - Azide and BSA Free NBP2-80922

Unit Size: 0.1 ml

Aliquot and store at -20C or -80C. Avoid freeze-thaw cycles.

[www.novusbio.com](http://www.novusbio.com)



[technical@novusbio.com](mailto:technical@novusbio.com)

Protocols, Publications, Related Products, Reviews, Research Tools and Images at:  
[www.novusbio.com/NBP2-80922](http://www.novusbio.com/NBP2-80922)

Updated 4/13/2025 v.20.1

Earn rewards for product  
reviews and publications.

Submit a publication at [www.novusbio.com/publications](http://www.novusbio.com/publications)

Submit a review at [www.novusbio.com/reviews/destination/NBP2-80922](http://www.novusbio.com/reviews/destination/NBP2-80922)



**NBP2-80922**

Rad21 Antibody (CM110-2C10) - Azide and BSA Free

Product Information	
Unit Size	0.1 ml
Concentration	1 mg/ml
Storage	Aliquot and store at -20C or -80C. Avoid freeze-thaw cycles.
Clonality	Monoclonal
Clone	CM110-2C10
Preservative	No Preservative
Isotype	IgG1 Kappa
Purity	Protein G purified
Buffer	PBS

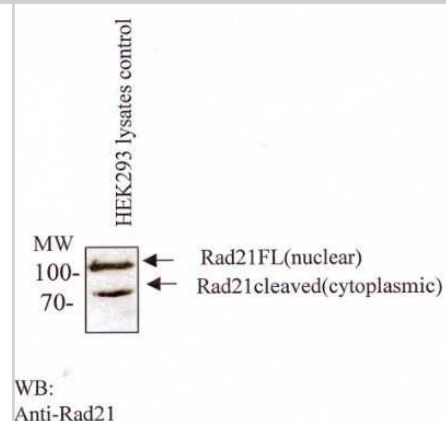
Product Description	
Host	Mouse
Gene ID	5885
Gene Symbol	RAD21
Species	Human, Mouse
Immunogen	An N-terminal fusion protein of the C-terminal fragment of Scc1 subunit human cohesin (amino acids 544-631 of hRad21).

Product Application Details	
Applications	Western Blot, Simple Western
Recommended Dilutions	Western Blot 1:500 (ECL), Simple Western 1:50
Application Notes	<p>This Rad21 (CM110-2C10) antibody can be used in Western blot, where two bands are seen. The full-length Rad21 is seen around 130 kDa, while the cleaved Rad21 is seen around 70 kDa.</p> <p>In Simple Western only 10 - 15 uL of the recommended dilution is used per data point. See <a href="#">Simple Western Antibody Database</a> for Simple Western validation: antibody dilution of 1:50. Separated by Size-Wes, Sally Sue/Peggy Sue.</p>

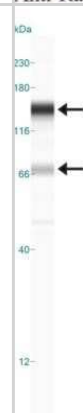


## Images

Western Blot: Rad21 Antibody (CM110-2C10) - Azide and BSA Free [NBP2-80922] - Western blot with monoclonal anti-Rad21 (NB100-386) in HEK293 lysates. Image from the standard format of this antibody.



Simple Western: Rad21 Antibody (CM110-2C10) - Azide and BSA Free [NBP2-80922] - Simple Western lane view shows a specific band for Rad21 in 0.5 mg/ml of Hek293 lysate. This experiment was performed under reducing conditions using the 12-230 kDa separation system. Image from the standard format of this antibody.





### **Novus Biologicals USA**

10730 E. Briarwood Avenue  
Centennial, CO 80112  
USA  
Phone: 303.730.1950  
Toll Free: 1.888.506.6887  
Fax: 303.730.1966  
nb-customerservice@bio-techne.com

### **Bio-Techne Canada**

21 Canmotor Ave  
Toronto, ON M8Z 4E6  
Canada  
Phone: 905.827.6400  
Toll Free: 855.668.8722  
Fax: 905.827.6402  
canada.inquires@bio-techne.com

### **Bio-Techne Ltd**

19 Barton Lane  
Abingdon Science Park  
Abingdon, OX14 3NB, United Kingdom  
Phone: (44) (0) 1235 529449  
Free Phone: 0800 37 34 15  
Fax: (44) (0) 1235 533420  
info.EMEA@bio-techne.com

### **General Contact Information**

[www.novusbio.com](http://www.novusbio.com)  
Technical Support: nb-technical@bio-techne.com  
Orders: nb-customerservice@bio-techne.com  
General: novus@novusbio.com

### **Products Related to NBP2-80922**

HAF007	Goat anti-Mouse IgG Secondary Antibody [HRP]
NB720-B	Rabbit anti-Mouse IgG (H+L) Secondary Antibody [Biotin]
NBP1-43319-0.5mg	Mouse IgG1 Kappa Isotype Control (P3.6.2.8.1)
NBP1-83260PEP	Rad21 Recombinant Protein Antigen

### **Limitations**

This product is for research use only and is not approved for use in humans or in clinical diagnosis. Primary Antibodies are guaranteed for 1 year from date of receipt.

For more information on our 100% guarantee, please visit [www.novusbio.com/guarantee](http://www.novusbio.com/guarantee)

Earn gift cards/discounts by submitting a review: [www.novusbio.com/reviews/submit/NBP2-80922](http://www.novusbio.com/reviews/submit/NBP2-80922)

Earn gift cards/discounts by submitting a publication using this product:  
[www.novusbio.com/publications](http://www.novusbio.com/publications)

