

Product Datasheet

Notch-1 Antibody (mN1A) - Azide and BSA Free NBP2-80884

Unit Size: 0.1 ml

Store at 4C short term. Aliquot and store at -20C long term. Avoid freeze-thaw cycles.

www.novusbio.com



technical@novusbio.com

Protocols, Publications, Related Products, Reviews, Research Tools and Images at:
www.novusbio.com/NBP2-80884

Updated 8/17/2023 v.20.1

Earn rewards for product
reviews and publications.

Submit a publication at www.novusbio.com/publications

Submit a review at www.novusbio.com/reviews/destination/NBP2-80884



NBP2-80884

Notch-1 Antibody (mN1A) - Azide and BSA Free

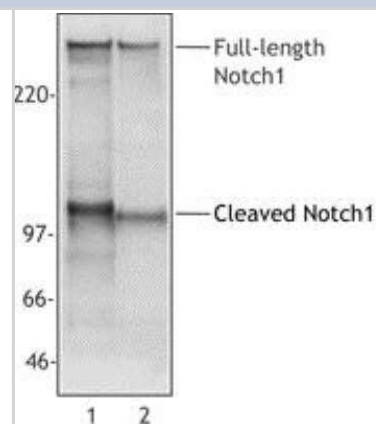
Product Information	
Unit Size	0.1 ml
Concentration	1 mg/ml
Storage	Store at 4C short term. Aliquot and store at -20C long term. Avoid freeze-thaw cycles.
Clonality	Monoclonal
Clone	mN1A
Preservative	No Preservative
Isotype	IgG1 Kappa
Purity	Protein G purified
Buffer	PBS
Target Molecular Weight	272.505 kDa

Product Description	
Host	Mouse
Gene ID	4851
Gene Symbol	NOTCH1
Species	Human, Mouse, Rat (Negative)
Reactivity Notes	Does not recognize rat Notch1.
Immunogen	Mouse Notch1 protein [Uniprot: Q01705]

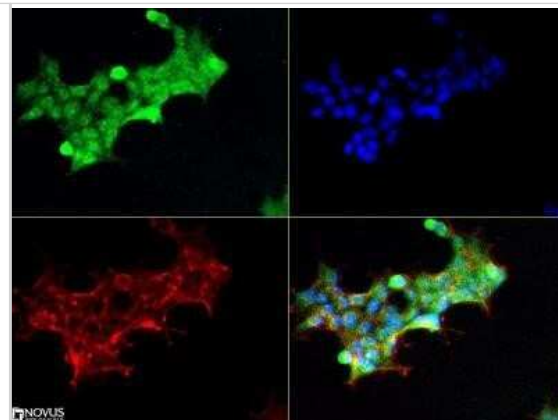
Product Application Details	
Applications	Western Blot, Flow Cytometry, Immunocytochemistry/ Immunofluorescence, Immunohistochemistry, Immunohistochemistry-Paraffin, Immunoprecipitation, CyTOF-ready, Knockout Validated
Recommended Dilutions	Western Blot 1 - 2 ug/ml, Flow Cytometry 1 ug per million cells, Immunohistochemistry 1:10 - 1:500, Immunocytochemistry/ Immunofluorescence 1:50 - 1:100, Immunoprecipitation 1:10 - 1:100, Immunohistochemistry-Paraffin 1:10 - 1:500, CyTOF-ready, Knockout Validated
Application Notes	The mN1A monoclonal antibody reacts with the intracellular domain of mouse and human Notch1 and has been reported to have highest affinity for activated intracellular Notch1 and lower affinity for full-length unprocessed/heterodimeric Notch1 forms. This antibody is CyTOF ready.

Images

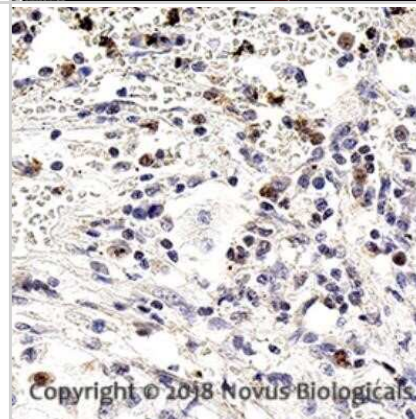
Western Blot: Notch-1 Antibody (mN1A) - Azide and BSA Free [NBP2-80884] - Cell extracts from Jurkat (Lane 1) or mouse thymocytes (Lane 2) were analyzed with monoclonal anti-NOTCH1 antibody. The mN1A antibody recognizes both mouse and human 270 kDa full-length NOTCH1 and 110-120 kDa cleaved NOTCH 1 (NICD). Image from the standard format of this antibody.



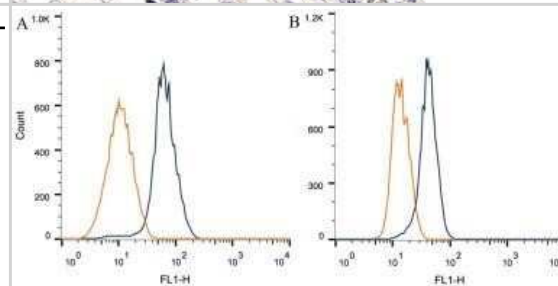
Immunocytochemistry/Immunofluorescence: Notch-1 Antibody (mN1A) - Azide and BSA Free [NBP2-80884] - The Notch1 Antibody was tested in HEK293 cells at a 1:50 dilution with DyLight 488 (Green). Actin was counterstained with Phalloidin 568 (Red) and cells were mounted in DAPI Fluoromount (Blue). Image from the standard format of this antibody.



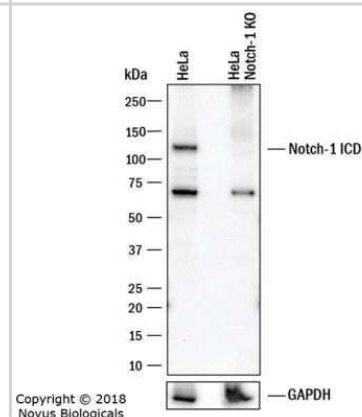
Immunohistochemistry: Notch-1 Antibody (mN1A) - Azide and BSA Free [NBP2-80884] - Analysis of FFPE human pancreatic cancer using 1:10 dilution of Notch-1 antibody on a Bond Rx autostainer (Leica Biosystems). The assay involved 20 minutes of heat induced antigen retrieval (HIER) using 10mM sodium citrate buffer (pH 6.0) and endogenous p



Flow Cytometry: Notch-1 Antibody (mN1A) - Azide and BSA Free [NBP2-80884] - Intracellular flow cytometric staining of 1×10^6 CHO (A) and MCF-7 (B) cells using Notch1 antibody (dark blue). Isotype control shown in orange. An antibody concentration of $1 \mu\text{g}/1 \times 10^6$ cells was used. Image from the standard format of this antibody.



Knockout Validated: Notch-1 Antibody (mN1A) - Azide and BSA Free [NBP2-80884] - Lysates of HeLa human cervical epithelial carcinoma parental cell line and Notch-1 knockout (KO) HeLa cell line. PVDF membrane was probed with 2.0 $\mu\text{g}/\text{mL}$ of Mouse Anti-Human Notch-1 Monoclonal Antibody (Catalog # NB100-78486) followed by HRP-conjugated Anti-Mouse IgG Secondary Antibody (Catalog # HAF018). Specific band was detected for Notch-1 at approximately 110 kDa (as indicated) in the parental HeLa cell line, but is not detectable in the knockout HeLa cell line. This experiment was conducted under reducing conditions. Image from the standard format of this antibody.





Novus Biologicals USA

10730 E. Briarwood Avenue
Centennial, CO 80112
USA
Phone: 303.730.1950
Toll Free: 1.888.506.6887
Fax: 303.730.1966
nb-customerservice@bio-techne.com

Bio-Techne Canada

21 Canmotor Ave
Toronto, ON M8Z 4E6
Canada
Phone: 905.827.6400
Toll Free: 855.668.8722
Fax: 905.827.6402
canada.inquires@bio-techne.com

Bio-Techne Ltd

19 Barton Lane
Abingdon Science Park
Abingdon, OX14 3NB, United Kingdom
Phone: (44) (0) 1235 529449
Free Phone: 0800 37 34 15
Fax: (44) (0) 1235 533420
info.EMEA@bio-techne.com

General Contact Information

www.novusbio.com
Technical Support: nb-technical@bio-techne.com
Orders: nb-customerservice@bio-techne.com
General: novus@novusbio.com

Products Related to NBP2-80884

HAF007	Goat anti-Mouse IgG Secondary Antibody [HRP]
NB720-B	Rabbit anti-Mouse IgG (H+L) Secondary Antibody [Biotin]
NBP1-43319-0.5mg	Mouse IgG1 Kappa Isotype Control (P3.6.2.8.1)
NBP1-78292PEP	Notch-1 Antibody Blocking Peptide

Limitations

This product is for research use only and is not approved for use in humans or in clinical diagnosis. Primary Antibodies are guaranteed for 1 year from date of receipt.

For more information on our 100% guarantee, please visit www.novusbio.com/guarantee

Earn gift cards/discounts by submitting a review: www.novusbio.com/reviews/submit/NBP2-80884

Earn gift cards/discounts by submitting a publication using this product:
www.novusbio.com/publications

