

Product Datasheet

Lysine (K)-specific Demethylase 3A/KDM3A/JMJD1A Antibody (1E12) - Azide and BSA Free NBP2-80839

Unit Size: 0.1 ml

Store at 4C short term. Aliquot and store at -20C long term. Avoid freeze-thaw cycles.

www.novusbio.com



technical@novusbio.com

Protocols, Publications, Related Products, Reviews, Research Tools and Images at:
www.novusbio.com/NBP2-80839

Updated 4/13/2025 v.20.1

Earn rewards for product
reviews and publications.

Submit a publication at www.novusbio.com/publications

Submit a review at www.novusbio.com/reviews/destination/NBP2-80839



NBP2-80839

Lysine (K)-specific Demethylase 3A/KDM3A/JMJD1A Antibody (1E12) - Azide and BSA Free

Product Information	
Unit Size	0.1 ml
Concentration	1 mg/ml
Storage	Store at 4C short term. Aliquot and store at -20C long term. Avoid freeze-thaw cycles.
Clonality	Monoclonal
Clone	1E12
Preservative	No Preservative
Isotype	IgG1
Purity	Ammonium sulfate precipitation
Buffer	PBS
Target Molecular Weight	147 kDa

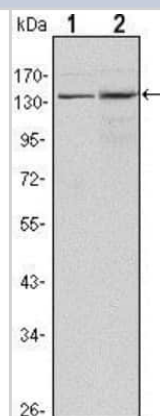
Product Description	
Host	Mouse
Gene ID	55818
Gene Symbol	KDM3A
Species	Human
Immunogen	Purified recombinant fragment of human JMJD1A expressed in E. coli. [UniProt# Q9Y4C1]

Product Application Details	
Applications	Western Blot, Simple Western, ELISA, Immunocytochemistry/Immunofluorescence, Immunohistochemistry, Immunohistochemistry-Paraffin
Recommended Dilutions	Western Blot 1:500-1:2000, Simple Western 1:500, ELISA 1:10000, Immunohistochemistry 1:200-1:1000, Immunocytochemistry/Immunofluorescence 1:10-1:500, Immunohistochemistry-Paraffin 1:200-1:1000
Application Notes	<p>This JMJD1A (1E12) antibody is useful in Western Blot, ELISA and Immunohistochemistry on paraffin-embedded sections.</p> <p>In Simple Western only 10 - 15 uL of the recommended dilution is used per data point.</p> <p>See Simple Western Antibody Database for Simple Western validation: antibody dilution of 1:500. Separated by Size-Wes, Sally Sue/Peggy Sue.</p> <p>The observed molecular weight of the protein may vary from the listed predicted molecular weight due to post translational modifications, post translation cleavages, relative charges, and other experimental factors.</p>

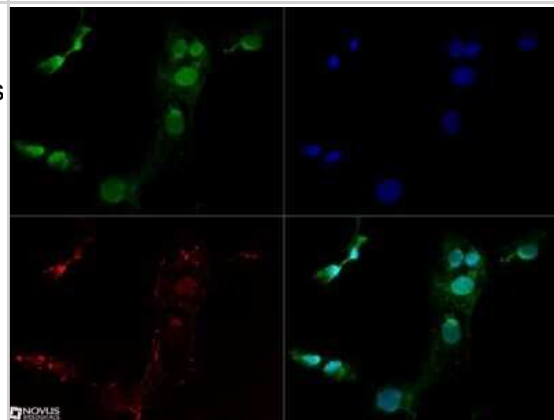


Images

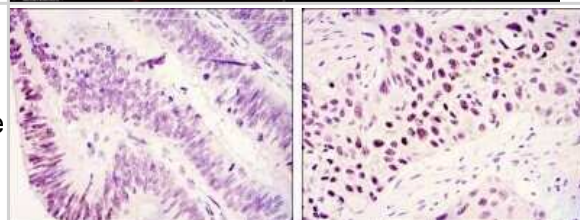
Western Blot: Lysine (K)-specific Demethylase 3A/KDM3A/JMJD1A Antibody (1E12) - Azide and BSA Free [NBP2-80839] - Western blot analysis using JMJD1A mouse mAb against Hela (1) and HepG2 (2) cell lysates. Image from the standard format of this antibody.



Immunocytochemistry/Immunofluorescence: Lysine (K)-specific Demethylase 3A/KDM3A/JMJD1A Antibody (1E12) - Azide and BSA Free [NBP2-80839] - JMJD1A antibody was tested at 1:10 in Ntera2 cells with Dylight 488 (green). Nuclei and alpha-tubulin were counterstained with DAPI (blue) and Dylight 550 (red). Image objective 40x. Image from the standard format of this antibody.



Immunohistochemistry-Paraffin: Lysine (K)-specific Demethylase 3A/KDM3A/JMJD1A Antibody (1E12) - Azide and BSA Free [NBP2-80839] - Immunohistochemical analysis of paraffin-embedded colonic cancer tissues (left) and lung cancer tissues (right) using JMJD1A mouse mAb with DAB staining. Image from the standard format of this antibody.



Simple Western: Lysine (K)-specific Demethylase 3A/KDM3A/JMJD1A Antibody (1E12) - Azide and BSA Free [NBP2-80839] - Simple Western lane view shows a specific band for JMJD1A in 0.5 mg/ml of HepG2 lysate. This experiment was performed under reducing conditions using the 12-230 kDa separation system. Image from the standard format of this antibody.





Novus Biologicals USA

10730 E. Briarwood Avenue
Centennial, CO 80112
USA
Phone: 303.730.1950
Toll Free: 1.888.506.6887
Fax: 303.730.1966
nb-customerservice@bio-techne.com

Bio-Techne Canada

21 Canmotor Ave
Toronto, ON M8Z 4E6
Canada
Phone: 905.827.6400
Toll Free: 855.668.8722
Fax: 905.827.6402
canada.inquires@bio-techne.com

Bio-Techne Ltd

19 Barton Lane
Abingdon Science Park
Abingdon, OX14 3NB, United Kingdom
Phone: (44) (0) 1235 529449
Free Phone: 0800 37 34 15
Fax: (44) (0) 1235 533420
info.EMEA@bio-techne.com

General Contact Information

www.novusbio.com
Technical Support: nb-technical@bio-techne.com
Orders: nb-customerservice@bio-techne.com
General: novus@novusbio.com

Products Related to NBP2-80839

HAF007	Goat anti-Mouse IgG Secondary Antibody [HRP]
NB720-B	Rabbit anti-Mouse IgG (H+L) Secondary Antibody [Biotin]
NBP1-97005-0.5mg	Mouse IgG1 Isotype Control (MG1)
NBP2-56254PEP	Lysine (K)-specific Demethylase 3A/KDM3A/JMJD1A Recombinant Protein Antigen

Limitations

This product is for research use only and is not approved for use in humans or in clinical diagnosis. Primary Antibodies are guaranteed for 1 year from date of receipt.

For more information on our 100% guarantee, please visit www.novusbio.com/guarantee

Earn gift cards/discounts by submitting a review: www.novusbio.com/reviews/submit/NBP2-80839

Earn gift cards/discounts by submitting a publication using this product:
www.novusbio.com/publications

