

Product Datasheet

LC3B Antibody (1251A) - Azide and BSA Free NBP2-80829

Unit Size: 0.1 mg

Store at 4C short term. Aliquot and store at -20C long term. Avoid freeze-thaw cycles.

www.novusbio.com



technical@novusbio.com

Protocols, Publications, Related Products, Reviews, Research Tools and Images at:
www.novusbio.com/NBP2-80829

Updated 9/3/2024 v.20.1

Earn rewards for product
reviews and publications.

Submit a publication at www.novusbio.com/publications

Submit a review at www.novusbio.com/reviews/destination/NBP2-80829



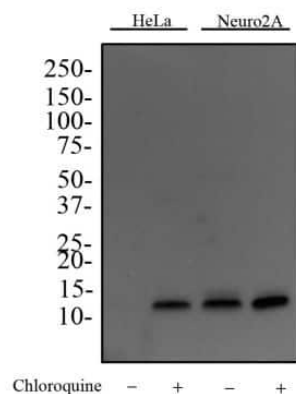
NBP2-80829

LC3B Antibody (1251A) - Azide and BSA Free

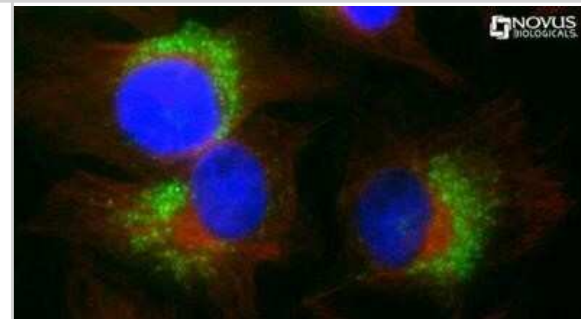
Product Information	
Unit Size	0.1 mg
Concentration	1 mg/ml
Storage	Store at 4C short term. Aliquot and store at -20C long term. Avoid freeze-thaw cycles.
Clonality	Monoclonal
Clone	1251A
Preservative	No Preservative
Isotype	IgG
Purity	Protein G purified
Buffer	PBS
Target Molecular Weight	14.688 kDa
Product Description	
Host	Rabbit
Gene ID	81631
Gene Symbol	MAP1LC3B
Species	Human, Mouse, Rat
Reactivity Notes	Mouse and Rat reactivity reported from verified customer reviews.
Immunogen	Recombinant monoclonal LC3B Antibody (1251A) was made to a synthetic peptide made to an N-terminal portion of the human LC3B protein sequence (between residues 1-100). [UniProt# Q9GZQ8].
Product Application Details	
Applications	Western Blot, Flow Cytometry, Flow (Intracellular), Immunocytochemistry/ Immunofluorescence, Immunohistochemistry, Immunohistochemistry-Paraffin, Immunoprecipitation, CyTOF-ready, Knockout Validated
Recommended Dilutions	Western Blot, Flow Cytometry, Immunohistochemistry 1:100-1:500, Immunocytochemistry/ Immunofluorescence 10-20 ug/ml, Immunoprecipitation 2-10 ug, Immunohistochemistry-Paraffin, Flow (Intracellular) 1 - 2.5 ug/ml, CyTOF-ready, Knockout Validated
Application Notes	In WB this LC3B recombinant monoclonal antibody detects both LC3B I and LC3B II with chloroquine treatment. With ICC autophagosome staining was observed after treatment with chloroquine.

Images

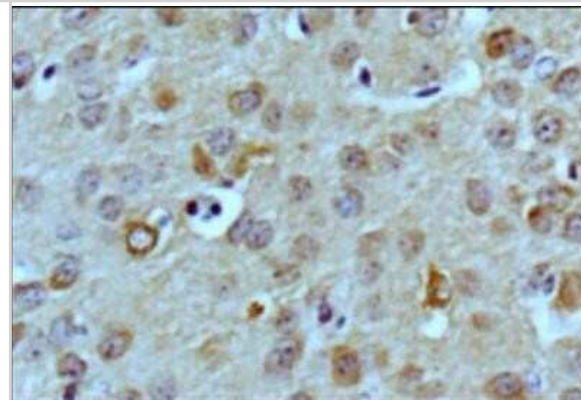
Western Blot: LC3B Antibody (1251A) - Azide and BSA Free [NBP2-80829] - Western Blot image of monoclonal anti-LC3B Antibody (Clone 1251D) [Catalog # NBP2-46892]. HeLa and Neuro2A cells were treated with or without 50 μ M chloroquine for 24 hours as indicated. Whole cell protein was then separated on a 4-15% gel by SDS-PAGE, transferred to 0.2 μ m PVDF membrane for 30 min and blocked in 5% non-fat milk in TBST (Tris-buffered saline, 0.1% Tween 20). The membrane was probed with 2 μ g/ml anti-LC3B Antibody in 1% milk, and detected with an anti-rabbit HRP secondary antibody using chemiluminescence. Note the accumulation of LC3B II upon chloroquine treatment. Bands for LC3 were detected at a molecular weight of approximately 15 kDa in treated HeLa cells, and both treated and untreated Neuro2A cells. Image from the standard format of this antibody.



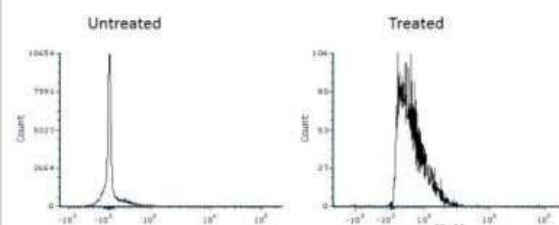
Immunocytochemistry/Immunofluorescence: LC3B Antibody (1251A) - Azide and BSA Free [NBP2-80829] - HeLa cells were treated with Chloroquine for 24 hours prior to fixation, permeabilization and incubation with anti- [Catalog # NBP2-46892] and anti tubulin (NB100-690) antibodies. Image enlargement shows the accumulation of LC3 (green) on autophagosomes in response to chloroquine treatment. Tubulin staining is shown in red and DNA is counterstained with DAPI (blue). Image from the standard format of this antibody.



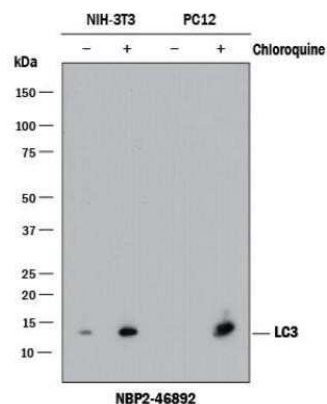
Immunohistochemistry-Paraffin: LC3B Antibody (1251A) - Azide and BSA Free [NBP2-80829] - IHC (Immunohistochemical) analysis of a formalin fixed and paraffin embedded tissue section of normal mouse brain using rabbit monoclonal LC3B (1251A) antibody [Catalog # NBP2-46892] at 1:100 dilution with HRP-DAB detection. The antibody generated a weak



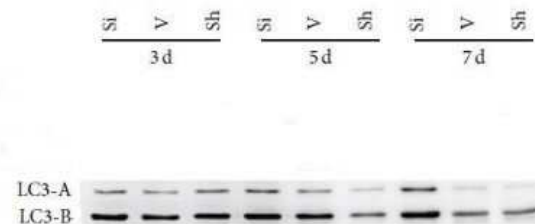
Flow Cytometry: LC3B Antibody (1251A) - Azide and BSA Free [NBP2-80829] - HeLa cells untreated or treated with 50 μ M chloroquine for 24h. Image from the Alexa Fluor 405 version of this antibody. Image from the standard format of this antibody.



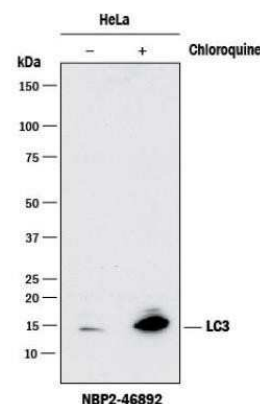
Western Blot: LC3B Antibody (1251A) - Azide and BSA Free [NBP2-80829] - Analysis shows lysates of HeLa human cervical epithelial carcinoma cell line untreated (-) or treated (+) with Chloroquine. PVDF membrane was probed with 0.2 ug/mL rabbit anti-LC3B monoclonal Antibody (1251A) (Catalog # NBP2-46892, Novus Biologicals), followed by 1:2000 dilution of goat anti-rabbit IgG secondary antibody. A specific band was detected for LC3B at a molecular weight of approximately 15 kDa in CQ treated NIH-3T3 and PC12 cell lines. Image from the standard format of this antibody.



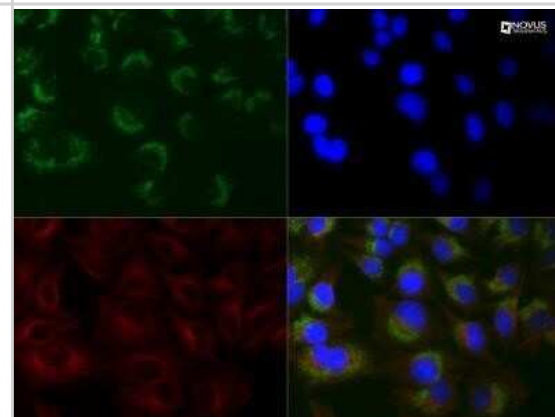
Western Blot: LC3B Antibody (1251A) - Azide and BSA Free [NBP2-80829] - The expression of LC3B in rat tissue. This image was submitted via customer Review. Image from the standard format of this antibody.



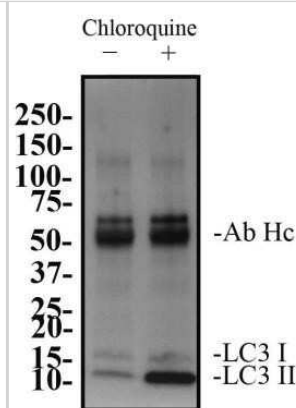
Western Blot: LC3B Antibody (1251A) - Azide and BSA Free [NBP2-80829] - Western Blot analysis using HeLa cells treated with (+) or without (-) Chloroquine (CQ). A specific band was detected for LC3B at a molecular weight of approximately 15 kDa. Image from the standard format of this antibody.



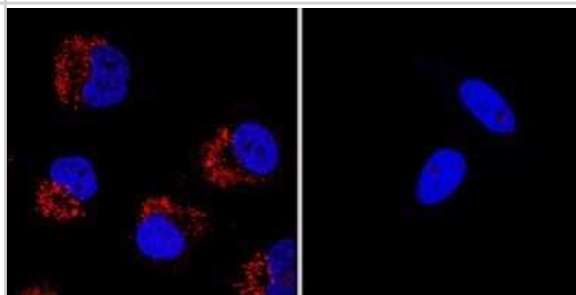
Immunocytochemistry/Immunofluorescence: LC3B Antibody (1251A) - Azide and BSA Free [NBP2-80829] - HeLa cells were treated with 50 uM Chloroquine for 24 hour prior to fixation in 10% buffered formalin for 10 min. Cells were permeabilized in 0.1% Triton X-100 and incubated with 20 ug/ml anti- [Catalog # NBP2-46892] and 1:500 anti-tubulin [Catalog # NB100-690] for 1 h at room temperature. LC3B reactivity (green) was detected with ant-rabbit Dylight 488 and tubulin (red) with anti-mouse Dylight 550. Nuclei were counterstained with DAPI (blue). Image from the standard format of this antibody.



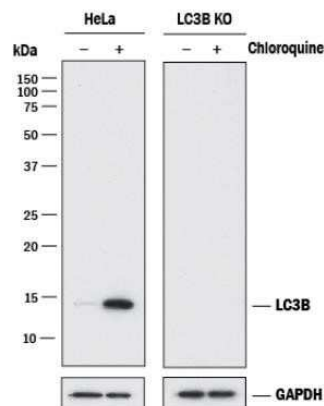
Immunoprecipitation: LC3B Antibody (1251A) - Azide and BSA Free [NBP2-80829] - Western blot analysis of LC3 immunoprecipitation. 10 ug of monoclonal anti-LC3B antibody (clone 1251A) [Catalog # NBP2-46892] was used to immunoprecipitate LC3 from 200 ug of total protein from HeLa cells treated with or without 50 uM chloroquine for 24 h. Antibody-protein was captured by magnetic protein A/G beads, washed and subjected to SDS-PAGE on a 4-15% gel. Protein was transferred to 0.2 um PVDF membrane and probed with 2 ug/ml anti-LC3B (NB100-2220) and detected with an anti-rabbit HRP conjugated secondary antibody using chemiluminescence. The detection of LC3 at a molecular weight of approximately 12 kDa and the antibody heavy chain (Ab Hc) at a molecular weight of approximately 50 kDa is indicated. Image from the standard format of this antibody.



Knockout Validated: LC3B Antibody (1251A) - Azide and BSA Free [NBP2-80829] - LC3B was detected in immersion fixed Chloroquine treated Hela cells (left) but was not detected in LC3B knockout Hela cells (right) using rabbit anti-human LC3B monoclonal antibody (1251A) [Catalog #NBP2-46892] at 0.3 ug/mL for 3 hours at room temperature. Cells were stained using the NorthernLights(TM) 557-conjugated Anti-Rabbit IgG Secondary Antibody (red; Catalog # NL004) and counterstained with DAPI (blue). Specific staining was localized to cytoplasm. Image from the standard format of this antibody.



Knockout Validated: LC3B Antibody (1251A) - Azide and BSA Free [NBP2-80829] - Western Blot analysis shows lysates of HeLa human cervical epithelial carcinoma parental cell line and LC3B knockout HeLa cell line (KO) untreated (-) or treated (+) with 50 uM Chloroquine for 18 hours. PVDF (Polyvinylidene difluoride) membrane was probed with 2.0 ug/mL of Rabbit Anti-Human/Mouse/Rat LC3B Monoclonal Antibody (1251A) [Catalog # NBP2-46892] followed by HRP-conjugated Anti-Rabbit IgG Secondary Antibody (Catalog# HAF008). A specific band was detected for LC3B at a molecular weight of approximately 15 kDa (as indicated) in the parental HeLa cell line, but is not detectable in the knockout HeLa cell line. GAPDH is shown as a loading control. This experiment was conducted under reducing conditions. Image from the standard format of this antibody.





Novus Biologicals USA

10730 E. Briarwood Avenue
Centennial, CO 80112
USA
Phone: 303.730.1950
Toll Free: 1.888.506.6887
Fax: 303.730.1966
nb-customerservice@bio-techne.com

Bio-Techne Canada

21 Canmotor Ave
Toronto, ON M8Z 4E6
Canada
Phone: 905.827.6400
Toll Free: 855.668.8722
Fax: 905.827.6402
canada.inquires@bio-techne.com

Bio-Techne Ltd

19 Barton Lane
Abingdon Science Park
Abingdon, OX14 3NB, United Kingdom
Phone: (44) (0) 1235 529449
Free Phone: 0800 37 34 15
Fax: (44) (0) 1235 533420
info.EMEA@bio-techne.com

General Contact Information

www.novusbio.com
Technical Support: nb-technical@bio-techne.com
Orders: nb-customerservice@bio-techne.com
General: novus@novusbio.com

Products Related to NBP2-80829

HAF008	Goat anti-Rabbit IgG Secondary Antibody [HRP]
NB7160	Goat anti-Rabbit IgG (H+L) Secondary Antibody [HRP]
NBP2-24891	Rabbit IgG Isotype Control
NB100-2220PEP	LC3B Antibody Blocking Peptide

Limitations

This product is for research use only and is not approved for use in humans or in clinical diagnosis. Primary Antibodies are guaranteed for 1 year from date of receipt.

For more information on our 100% guarantee, please visit www.novusbio.com/guarantee

Earn gift cards/discounts by submitting a review: www.novusbio.com/reviews/submit/NBP2-80829

Earn gift cards/discounts by submitting a publication using this product:
www.novusbio.com/publications

