

# Product Datasheet

## Glyoxalase I Antibody (Glo1a) - Azide and BSA Free NBP2-80755

Unit Size: 0.1 ml

Store at -20C. Avoid freeze-thaw cycles.

[www.novusbio.com](http://www.novusbio.com)



[technical@novusbio.com](mailto:technical@novusbio.com)

Protocols, Publications, Related Products, Reviews, Research Tools and Images at:  
[www.novusbio.com/NBP2-80755](http://www.novusbio.com/NBP2-80755)

Updated 2/17/2025 v.20.1

Earn rewards for product  
reviews and publications.

Submit a publication at [www.novusbio.com/publications](http://www.novusbio.com/publications)

Submit a review at [www.novusbio.com/reviews/destination/NBP2-80755](http://www.novusbio.com/reviews/destination/NBP2-80755)



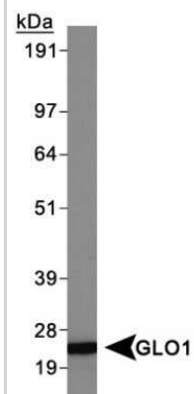
**NBP2-80755**

Glyoxalase I Antibody (Glo1a) - Azide and BSA Free

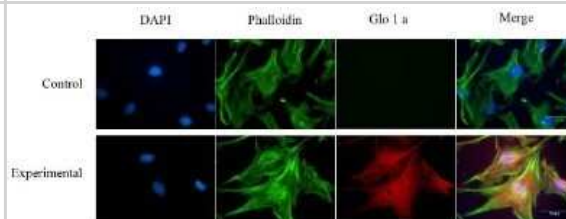
Product Information	
Unit Size	0.1 ml
Concentration	1 mg/ml
Storage	Store at -20C. Avoid freeze-thaw cycles.
Clonality	Monoclonal
Clone	Glo1a
Preservative	No Preservative
Isotype	IgG1 Kappa
Purity	Protein G purified
Buffer	Tris-Glycine, 0.15 M NaCl
Target Molecular Weight	21 kDa
Product Description	
Host	Mouse
Gene ID	2739
Gene Symbol	GLO1
Species	Human, Mouse
Immunogen	Full length human GLO1 protein [Swiss-Prot #Q04760].
Product Application Details	
Applications	Western Blot, Simple Western, ELISA, Immunocytochemistry/ Immunofluorescence, Immunoprecipitation
Recommended Dilutions	Western Blot, Simple Western 1:50, ELISA 0.15 ng / 1 ug protein, Immunocytochemistry/ Immunofluorescence 10 ug/ml, Immunoprecipitation reported in scientific literature
Application Notes	<p>In Western blot, a band is seen approx. 21 kDa.</p> <p>In Simple Western only 10 - 15 uL of the recommended dilution is used per data point.</p> <p>See <a href="#">Simple Western Antibody Database</a> for Simple Western validation: antibody dilution of 1:50. Separated by Size-Wes, Sally Sue/Peggy Sue.</p> <p>The observed molecular weight of the protein may vary from the listed predicted molecular weight due to post translational modifications, post translation cleavages, relative charges, and other experimental factors.</p>

## Images

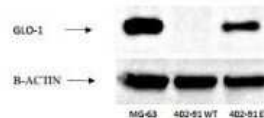
Western Blot: Glyoxalase I Antibody (Glo1a) - Azide and BSA Free [NBP2-80755] - HeLa whole cell extracts. Image from the standard format of this antibody.



Immunocytochemistry/Immunofluorescence: Glyoxalase I Antibody (Glo1a) - Azide and BSA Free [NBP2-80755] - Immunostaining of human retinal endothelial cells. Immunoreactivity for hGlx-1 was detected in human retinal endothelial cells stained with Glo1a mAb using anti mouse IgG Texas Red as secondary Ab. The cells were counter stained with phalloidin (green) and DAPI (blue), nuclear stain. No reactivity was detected in control cells, stained without Go1a mAb. Figure is a representative of 3 independent experiments. Photo courtesy of Dr. Nagaraj, Case Western Reserve University. Image from the standard format of this antibody.



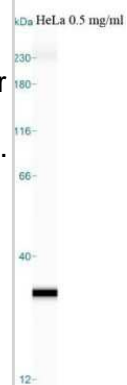
Western Blot: Glyoxalase I Antibody (Glo1a) - Azide and BSA Free [NBP2-80755] - Detection of GLO-1 in human cell lines. Lane 1,2 and 3: MG-63 osteosarcoma cell line (positive control), 402-91 liposarcoma cell line and 402-91 liposarcoma cell line resistant to trabectedine. This image was submitted via customer Review. Image from the standard format of this antibody.



Simple Western: Glyoxalase I Antibody (Glo1a) - Azide and BSA Free [NBP2-80755] - Simple Western lane view shows a specific band for GLO1 in 0.5 mg/ml of HeLa lysate. This experiment was performed under reducing conditions using the 12-230kDa separation system. \* Non-specific interaction with the 230 kDa Simple Western standard may be seen with this antibody. Image from the standard format of this antibody.



Simple Western: Glyoxalase I Antibody (Glo1a) - Azide and BSA Free [NBP2-80755] - Simple Western lane view shows a specific band detected for GLO1 in HeLa lysate. This experiment was performed under reducing conditions using the Wes or Sally Sue separation system 12-230kDa (or 66-440kDa). Image from the standard format of this antibody.





### **Novus Biologicals USA**

10730 E. Briarwood Avenue  
Centennial, CO 80112  
USA  
Phone: 303.730.1950  
Toll Free: 1.888.506.6887  
Fax: 303.730.1966  
nb-customerservice@bio-techne.com

### **Bio-Techne Canada**

21 Canmotor Ave  
Toronto, ON M8Z 4E6  
Canada  
Phone: 905.827.6400  
Toll Free: 855.668.8722  
Fax: 905.827.6402  
canada.inquires@bio-techne.com

### **Bio-Techne Ltd**

19 Barton Lane  
Abingdon Science Park  
Abingdon, OX14 3NB, United Kingdom  
Phone: (44) (0) 1235 529449  
Free Phone: 0800 37 34 15  
Fax: (44) (0) 1235 533420  
info.EMEA@bio-techne.com

### **General Contact Information**

www.novusbio.com  
Technical Support: nb-technical@bio-techne.com  
Orders: nb-customerservice@bio-techne.com  
General: novus@novusbio.com

### **Products Related to NBP2-80755**

---

HAF007	Goat anti-Mouse IgG Secondary Antibody [HRP]
NB720-B	Rabbit anti-Mouse IgG (H+L) Secondary Antibody [Biotin]
NBP1-43319-0.5mg	Mouse IgG1 Kappa Isotype Control (P3.6.2.8.1)
NBP2-56695PEP	Glyoxalase I Recombinant Protein Antigen

---

### **Limitations**

This product is for research use only and is not approved for use in humans or in clinical diagnosis. Primary Antibodies are guaranteed for 1 year from date of receipt.

For more information on our 100% guarantee, please visit [www.novusbio.com/guarantee](http://www.novusbio.com/guarantee)

Earn gift cards/discounts by submitting a review: [www.novusbio.com/reviews/submit/NBP2-80755](http://www.novusbio.com/reviews/submit/NBP2-80755)

Earn gift cards/discounts by submitting a publication using this product:  
[www.novusbio.com/publications](http://www.novusbio.com/publications)

