

Product Datasheet

EpCAM/TROP1 Antibody (AUA1) - Azide and BSA Free NBP2-80721

Unit Size: 0.1 ml

Store at 4C short term. Aliquot and store at -20C long term. Avoid freeze-thaw cycles.

www.novusbio.com



technical@novusbio.com

Protocols, Publications, Related Products, Reviews, Research Tools and Images at:
www.novusbio.com/NBP2-80721

Updated 9/9/2025 v.20.1

Earn rewards for product
reviews and publications.

Submit a publication at www.novusbio.com/publications

Submit a review at www.novusbio.com/reviews/destination/NBP2-80721



NBP2-80721

EpCAM/TROP1 Antibody (AUA1) - Azide and BSA Free

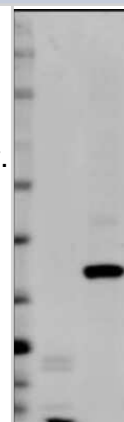
Product Information	
Unit Size	0.1 ml
Concentration	1 mg/ml
Storage	Store at 4C short term. Aliquot and store at -20C long term. Avoid freeze-thaw cycles.
Clonality	Monoclonal
Clone	AUA1
Preservative	No Preservative
Isotype	IgG1
Purity	Protein G purified
Buffer	PBS
Target Molecular Weight	35 kDa

Product Description	
Description	Novus Biologicals Mouse EpCAM/TROP1 Antibody (AUA1) - Azide and BSA Free (NB600-1182) is a monoclonal antibody validated for use in IHC, WB, ELISA, Flow and ICC/IF. All Novus Biologicals antibodies are covered by our 100% guarantee.
Host	Mouse
Gene ID	4072
Gene Symbol	EPCAM
Species	Human
Immunogen	LoVo cell line preparation (Human).

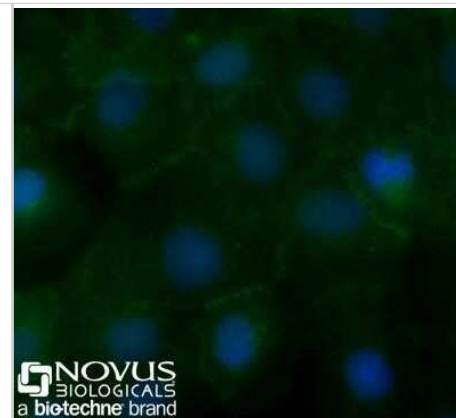
Product Application Details	
Applications	Western Blot, Immunohistochemistry-Paraffin, ELISA, Flow Cytometry, Immunocytochemistry/ Immunofluorescence, Immunohistochemistry, CyTOF-ready
Recommended Dilutions	Western Blot 1:500, Flow Cytometry 1 ug per million cells, ELISA 1:100-1:2000, Immunohistochemistry 1:10-1:500, Immunocytochemistry/ Immunofluorescence 1:10-1:500, Immunohistochemistry-Paraffin 1:10-1:500. Use reported in scientific literature (PMID 21763624), CyTOF-ready
Application Notes	This antibody is CyTOF ready.

Images

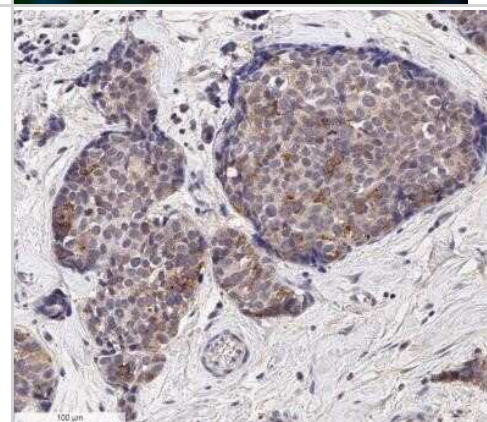
Western Blot: EpCAM/TROP1 Antibody (AUA1) - Azide and BSA Free [NBP2-80721] - Detection of EpCAM/CD326 in two Human mammary tumor cell lines, MDA-MB-231 (mesenchyme-like) and MCF-7 (epithelium-like). Dilution: 1:500 in PBS with 5% BSA. Secondary Ab: anti-Mouse IgG 1:5,000. This image was submitted via customer Review. Image from the standard format of this antibody.



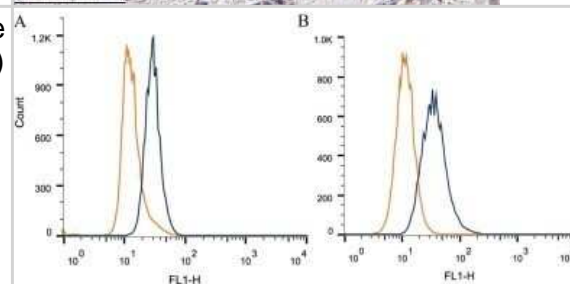
Immunocytochemistry/Immunofluorescence: EpCAM/TROP1 Antibody (AUA1) - Azide and BSA Free [NBP2-80721] - A431 cells were fixed for 10 minutes using 10% formalin and then permeabilized for 5 minutes using 1X PBS + 0.05% Triton X-100. The cells were incubated with anti-EpCAM/TROP1 (AUA1) conjugated to Alexa Fluor 488 [NB600-1182AF488] at 10ug/ml for 1 hour at room temperature. Nuclei were counterstained with DAPI (blue). Cells were imaged using a 40X objective.



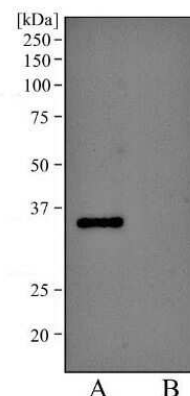
Immunohistochemistry: EpCAM/TROP1 Antibody (AUA1) - Azide and BSA Free [NBP2-80721] - Analysis of a FFPE human breast carcinoma tissue with 1:500 dilution of EpCAM/TROP1 antibody (clone AUA1) on a Bond Rx autostainer (Leica Biosystems). The assay involved 20 minutes of heat induced antigen retrieval (HIER) with 10mM sodium citrate buffer (



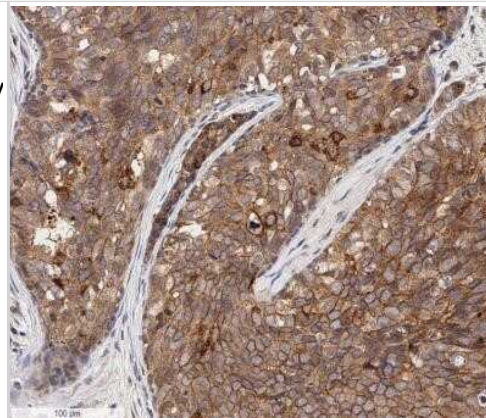
Flow Cytometry: EpCAM/TROP1 Antibody (AUA1) - Azide and BSA Free [NBP2-80721] - Intracellular flow cytometric staining of 1×10^6 CHO (A) and HeLa (B) cells using EpCAM/CD326 antibody (blue) and matched Isotype control (orange). An antibody concentration of 1 ug/ 1×10^6 cells was used. Image from the standard format of this antibody.



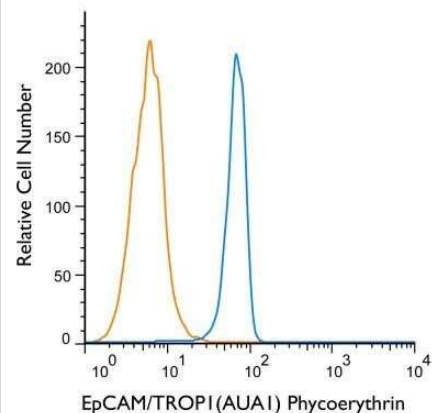
Western Blot: EpCAM/TROP1 Antibody (AUA1) - Azide and BSA Free [NBP2-80721] - Analysis of A431 lysate (A) and Hek293 lysate (B) using EpCAM/CD326 antibody (AUA1) at 2 ug/ml. Non-reduced lysate was used in each lane. Image from the standard format of this antibody.



Immunohistochemistry-Paraffin: EpCAM/TROP1 Antibody (AUA1) - Azide and BSA Free [NBP2-80721] - Analysis of a FFPE human breast carcinoma tissue section using 1:100 dilution of EpCAM/TROP1 antibody (clone AUA1) on a Bond Rx autostainer (Leica Biosystems). The assay involved 20 minutes of heat induced antigen retrieval (HIER) with 10mM sodium citrate



Flow Cytometry: EpCAM/TROP1 Antibody (AUA1) - Azide and BSA Free [NBP2-80721] - Using the PE direct conjugate A cell surface stain was performed on HT-29 cells with EpCAM (AUA1) antibody NB600-1182PE (blue) and a matched isotype control NBP2-27287PE (orange). Cells were incubated in an antibody dilution of 5 ug/mL for 20 minutes at room temperature. Both antibodies were directly conjugated to phycoerythrin.





Novus Biologicals USA

10730 E. Briarwood Avenue
Centennial, CO 80112
USA
Phone: 303.730.1950
Toll Free: 1.888.506.6887
Fax: 303.730.1966
nb-customerservice@bio-techne.com

Bio-Techne Canada

21 Canmotor Ave
Toronto, ON M8Z 4E6
Canada
Phone: 905.827.6400
Toll Free: 855.668.8722
Fax: 905.827.6402
canada.inquires@bio-techne.com

Bio-Techne Ltd

19 Barton Lane
Abingdon Science Park
Abingdon, OX14 3NB, United Kingdom
Phone: (44) (0) 1235 529449
Free Phone: 0800 37 34 15
Fax: (44) (0) 1235 533420
info.EMEA@bio-techne.com

General Contact Information

www.novusbio.com
Technical Support: nb-technical@bio-techne.com
Orders: nb-customerservice@bio-techne.com
General: novus@novusbio.com

Products Related to NBP2-80721

HAF007	Goat anti-Mouse IgG Secondary Antibody [HRP]
NB720-B	Rabbit anti-Mouse IgG (H+L) Secondary Antibody [Biotin]
NBP1-97005-0.5mg	Mouse IgG1 Isotype Control (MG1)
NBP2-52190-0.05mg	Recombinant Human EpCAM/TROP1 His Protein

Limitations

This product is for research use only and is not approved for use in humans or in clinical diagnosis. Primary Antibodies are guaranteed for 1 year from date of receipt.

For more information on our 100% guarantee, please visit www.novusbio.com/guarantee

Earn gift cards/discounts by submitting a review: www.novusbio.com/reviews/submit/NBP2-80721

Earn gift cards/discounts by submitting a publication using this product:
www.novusbio.com/publications

