

# Product Datasheet

## CUGBP1/CELF1 Antibody (3B1) - Azide and BSA Free NBP2-80684

Unit Size: 0.1 ml

Aliquot and store at -20C or -80C. Avoid freeze-thaw cycles.

[www.novusbio.com](http://www.novusbio.com)



[technical@novusbio.com](mailto:technical@novusbio.com)

Protocols, Publications, Related Products, Reviews, Research Tools and Images at:  
[www.novusbio.com/NBP2-80684](http://www.novusbio.com/NBP2-80684)

Updated 9/9/2025 v.20.1

Earn rewards for product  
reviews and publications.

Submit a publication at [www.novusbio.com/publications](http://www.novusbio.com/publications)

Submit a review at [www.novusbio.com/reviews/destination/NBP2-80684](http://www.novusbio.com/reviews/destination/NBP2-80684)

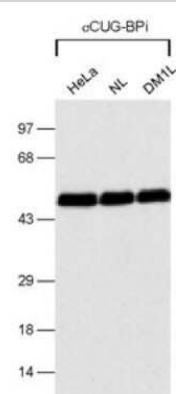


**NBP2-80684****CUGBP1/CELF1 Antibody (3B1) - Azide and BSA Free**

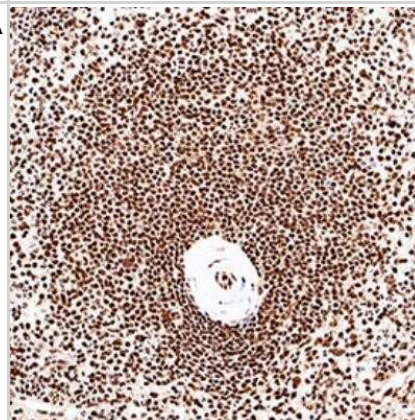
<b>Product Information</b>	
<b>Unit Size</b>	0.1 ml
<b>Concentration</b>	1 mg/ml
<b>Storage</b>	Aliquot and store at -20C or -80C. Avoid freeze-thaw cycles.
<b>Clonality</b>	Monoclonal
<b>Clone</b>	3B1
<b>Preservative</b>	No Preservative
<b>Isotype</b>	IgG1 Kappa
<b>Purity</b>	Protein G purified
<b>Buffer</b>	Tris-Glycine, 0.15 M NaCl
<b>Target Molecular Weight</b>	50 kDa
<b>Product Description</b>	
<b>Description</b>	Novus Biologicals Mouse CUGBP1/CELF1 Antibody (3B1) - Azide and BSA Free (NB200-316) is a monoclonal antibody validated for use in IHC, WB, Flow, ICC/IF, Simple Western and IP. All Novus Biologicals antibodies are covered by our 100% guarantee.
<b>Host</b>	Mouse
<b>Gene ID</b>	10658
<b>Gene Symbol</b>	CELF1
<b>Species</b>	Human, Mouse, Rat, Porcine, Bovine, Primate, Rabbit
<b>Immunogen</b>	Full-length human CUGBP1 [UniProt# Q92879]
<b>Product Application Details</b>	
<b>Applications</b>	Western Blot, Simple Western, Immunohistochemistry-Paraffin, Flow Cytometry, Gel Super Shift Assays, Immunocytochemistry/ Immunofluorescence, Immunohistochemistry, Immunohistochemistry-Frozen, Immunoprecipitation
<b>Recommended Dilutions</b>	Western Blot 1:500, Simple Western 1:200, Flow Cytometry 1 ug per million cells, Immunohistochemistry 1:100-1:500, Immunocytochemistry/ Immunofluorescence 1:50-1:200, Immunoprecipitation reported in scientific literature, Immunohistochemistry-Paraffin 1:100-1:500, Immunohistochemistry-Frozen 1:100-1:500, Gel Super Shift Assays reported in scientific literature
<b>Application Notes</b>	<p>In Western Blot, a band is observed at approx. 50 kDa. Nuclear staining can be seen in ICC/IF.</p> <p>In Simple Western only 10 - 15 uL of the recommended dilution is used per data point.</p> <p>See <a href="#">Simple Western Antibody Database</a> for Simple Western validation: antibody dilution of 1:200. Separated by Size-Wes, Sally Sue/Peggy Sue.</p> <p>The observed molecular weight of the protein may vary from the listed predicted molecular weight due to post translational modifications, post translation cleavages, relative charges, and other experimental factors.</p>

## Images

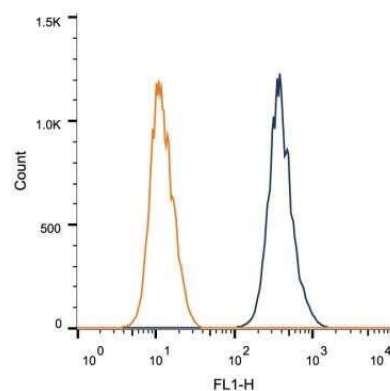
Western Blot: CUGBP1/CELF1 Antibody (3B1) - Azide and BSA Free [NBP2-80684] - Detection of CUG-BP1 in several cell lysates. Image from the standard format of this antibody.



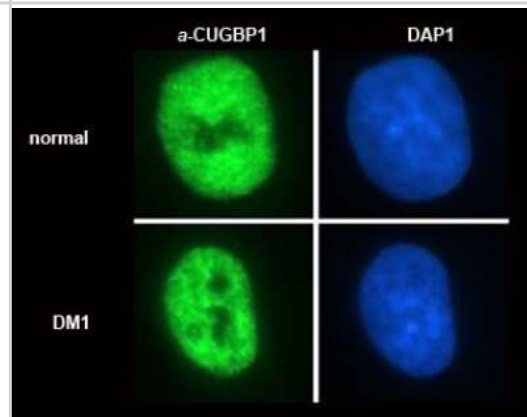
Immunocytochemistry: CUGBP1/CELF1 Antibody (3B1) - Azide and BSA Free [NBP2-80684] - IHC analysis of a formalin fixed paraffin-embedded (FFPE) human spleen using 1:100 conc. of CUGBP1/CELF1 antibody on a Bond Rx autostainer (Leica Biosystems). The assay involved 30 minutes of heat induced antigen retrieval (HIER) using 10mM sodium citrate



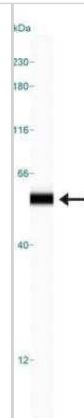
Flow Cytometry: CUGBP1/CELF1 Antibody (3B1) - Azide and BSA Free [NBP2-80684] - Intracellular flow cytometric staining of  $1 \times 10^6$  MCF-7 cells using CUGBP1 antibody (dark blue). Isotype control shown in orange. An antibody concentration of  $1 \mu\text{g}/1 \times 10^6$  cells was used. Image from the standard format of this antibody.



Immunocytochemistry/Immunofluorescence: CUGBP1/CELF1 Antibody (3B1) - Azide and BSA Free [NBP2-80684] - Detection of the subcellular distribution of CUGBP1 (nuclear, non-nucleolar) in normal and DM1 (dystrophia myotonica) myoblasts. Image from the standard format of this antibody.



Simple Western: CUGBP1/CELF1 Antibody (3B1) - Azide and BSA Free [NBP2-80684] - Simple Western lane view shows a specific band for CUGBP1 in 0.5 mg/ml of HeLa lysate. This experiment was performed under reducing conditions using the 12-230 kDa separation system. Image from the standard format of this antibody.





### **Novus Biologicals USA**

10730 E. Briarwood Avenue  
Centennial, CO 80112  
USA  
Phone: 303.730.1950  
Toll Free: 1.888.506.6887  
Fax: 303.730.1966  
nb-customerservice@bio-techne.com

### **Bio-Techne Canada**

21 Canmotor Ave  
Toronto, ON M8Z 4E6  
Canada  
Phone: 905.827.6400  
Toll Free: 855.668.8722  
Fax: 905.827.6402  
canada.inquires@bio-techne.com

### **Bio-Techne Ltd**

19 Barton Lane  
Abingdon Science Park  
Abingdon, OX14 3NB, United Kingdom  
Phone: (44) (0) 1235 529449  
Free Phone: 0800 37 34 15  
Fax: (44) (0) 1235 533420  
info.EMEA@bio-techne.com

### **General Contact Information**

www.novusbio.com  
Technical Support: nb-technical@bio-techne.com  
Orders: nb-customerservice@bio-techne.com  
General: novus@novusbio.com

### **Products Related to NBP2-80684**

---

NBP2-33376H	Blue Marker Antibody (6F4-F6) [HRP]
HAF007	Goat anti-Mouse IgG Secondary Antibody [HRP]
NB7539	Goat anti-Mouse IgG (H+L) Secondary Antibody [HRP]
NBP1-43319-0.5mg	Mouse IgG1 Kappa Isotype Control (P3.6.2.8.1)

---

### **Limitations**

This product is for research use only and is not approved for use in humans or in clinical diagnosis. Primary Antibodies are guaranteed for 1 year from date of receipt.

For more information on our 100% guarantee, please visit [www.novusbio.com/guarantee](http://www.novusbio.com/guarantee)

Earn gift cards/discounts by submitting a review: [www.novusbio.com/reviews/submit/NBP2-80684](http://www.novusbio.com/reviews/submit/NBP2-80684)

Earn gift cards/discounts by submitting a publication using this product:  
[www.novusbio.com/publications](http://www.novusbio.com/publications)

