

Product Datasheet

CCL2/MCP1 Antibody (2D8) - Azide and BSA Free NBP2-80618

Unit Size: 0.1 ml

Store at 4C short term. Aliquot and store at -20C long term. Avoid freeze-thaw cycles.

www.novusbio.com



technical@novusbio.com

Protocols, Publications, Related Products, Reviews, Research Tools and Images at:
www.novusbio.com/NBP2-80618

Updated 8/17/2023 v.20.1

Earn rewards for product
reviews and publications.

Submit a publication at www.novusbio.com/publications

Submit a review at www.novusbio.com/reviews/destination/NBP2-80618



NBP2-80618

CCL2/MCP1 Antibody (2D8) - Azide and BSA Free

Product Information

Unit Size	0.1 ml
Concentration	1 mg/ml
Storage	Store at 4C short term. Aliquot and store at -20C long term. Avoid freeze-thaw cycles.
Clonality	Monoclonal
Clone	2D8
Preservative	No Preservative
Isotype	IgG1
Purity	Ammonium sulfate precipitation
Buffer	PBS
Target Molecular Weight	11 kDa

Product Description

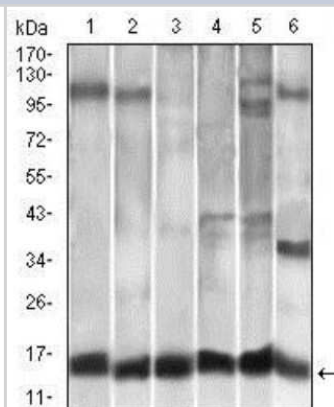
Host	Mouse
Gene ID	6347
Gene Symbol	CCL2
Species	Human, Mouse, Rat, Feline, Primate
Reactivity Notes	Rat reactivity reported in scientific literature (PMID: 29286133).
Immunogen	Full lenght human MCP1 expressed in E. coli. [Uniprot: P13500]

Product Application Details

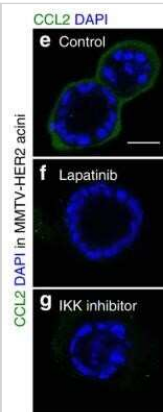
Applications	Western Blot, ELISA, Flow Cytometry, Immunocytochemistry/Immunofluorescence, Immunohistochemistry, Immunohistochemistry-Paraffin, CyTOF-ready
Recommended Dilutions	Western Blot 1:500-1:2000, Flow Cytometry 1:200-1:400, ELISA 1:10000, Immunohistochemistry 1:200-1:1000, Immunocytochemistry/Immunofluorescence 1:200-1:1000, Immunohistochemistry-Paraffin 1:200-1:1000, CyTOF-ready

Images

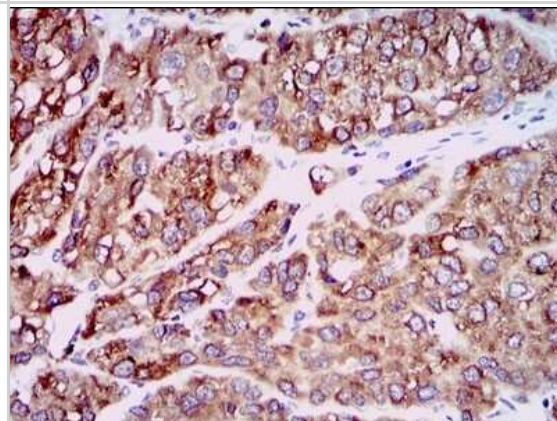
Western Blot: CCL2/MCP1 Antibody (2D8) - Azide and BSA Free [NBP2-80618] - Analysis using MCP1 mouse mAb against A549 (1), HeLa (2), Raw264.7 (3), L1210 (4), C6 (5), and COS-7 (6) cell lysates. Image from the standard format of this antibody.



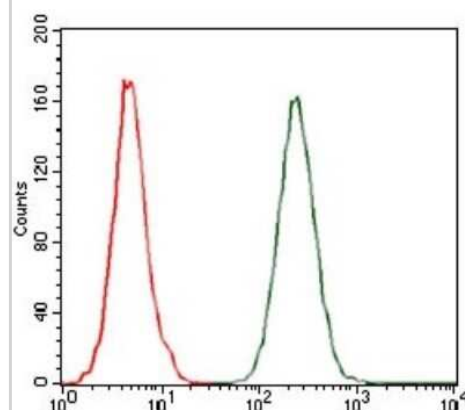
Immunocytochemistry/Immunofluorescence: CCL2/MCP1 Antibody (2D8) - Azide and BSA Free [NBP2-80618] - CCL2 staining in acini cultures from MMTV-HER2 MGs (20-24 weeks) grown for 5 days and then DMSO-treated (vehicle control, e), 1uM lapatinib (f) or 1 uM IKKi compound A (g) for 24 hrs. Bar: 25 um. Image collected and cropped by CiteAb from the following publication (<https://www.nature.com/articles/s41467-017-02481-5>), licensed under a CC-BY license. Image from the standard format of this antibody.



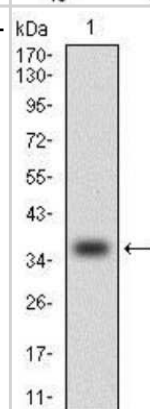
Immunohistochemistry-Paraffin: CCL2/MCP1 Antibody (2D8) - Azide and BSA Free [NBP2-80618] - Analysis of paraffin-embedded liver cancer tissues using MCP1 mouse mAb with DAB staining. Image from the standard format of this antibody.



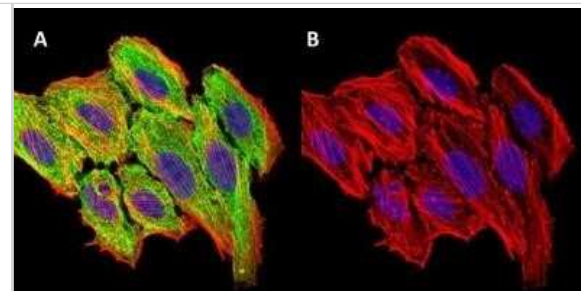
Flow Cytometry: CCL2/MCP1 Antibody (2D8) - Azide and BSA Free [NBP2-80618] - Analysis of A549 cells using MCP1 mouse mAb (green) and negative control (red). Image from the standard format of this antibody.



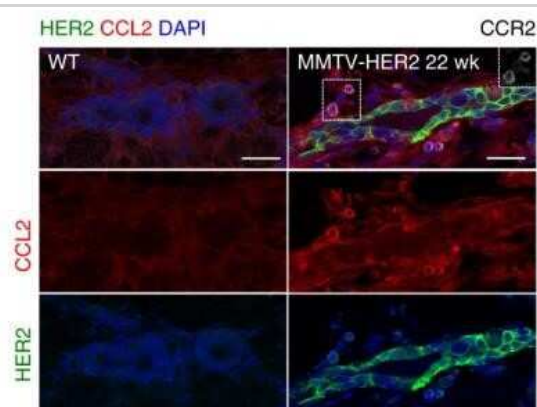
Western Blot: CCL2/MCP1 Antibody (2D8) - Azide and BSA Free [NBP2-80618] - Analysis using MCP1 mAb against human MCP1 (AA: 1-99) recombinant protein. (Expected MW is 36.5 kDa) Image from the standard format of this antibody.



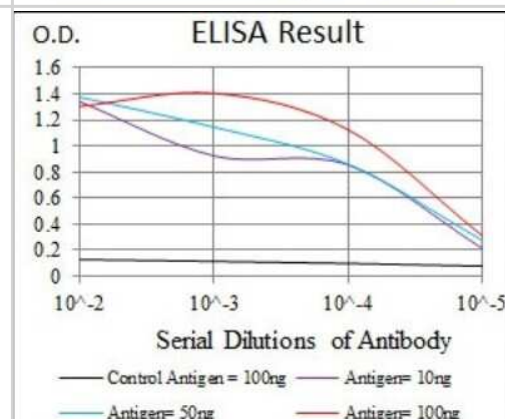
Immunocytochemistry/Immunofluorescence: CCL2/MCP1 Antibody (2D8) - Azide and BSA Free [NBP2-80618] - Analysis of HepG2 cells using A) MCP1 mAb (green), DRAQ5 fluorescent DNA dye (blue), and Actin filaments have been labeled with Alexa Fluor-555 phalloidin (red). B) Staining without MCP1 mAb Image from the standard format of this antibody.



Immunohistochemistry: CCL2/MCP1 Antibody (2D8) - Azide and BSA Free [NBP2-80618] - HER2 activates NF- κ B and upregulates CCL2. MGs from FVB wild-type and 22-week-old MMTV-HER2 mice stained against CCL2, HER2, and CCR2. Bars: 25 μ m. Inset, CCR2 signal, zoom factor 1x; full image in Supplementary Fig. 5i. CCL2 intensity was quantified using



ELISA: CCL2/MCP1 Antibody (2D8) - Azide and BSA Free [NBP2-80618] - Red: Control Antigen (100ng), Purple: Antigen (10ng), Green: Antigen (50ng), Blue: Antigen (100ng). Image from the standard format of this antibody.





Novus Biologicals USA

10730 E. Briarwood Avenue
Centennial, CO 80112
USA
Phone: 303.730.1950
Toll Free: 1.888.506.6887
Fax: 303.730.1966
nb-customerservice@bio-techne.com

Bio-Techne Canada

21 Canmotor Ave
Toronto, ON M8Z 4E6
Canada
Phone: 905.827.6400
Toll Free: 855.668.8722
Fax: 905.827.6402
canada.inquires@bio-techne.com

Bio-Techne Ltd

19 Barton Lane
Abingdon Science Park
Abingdon, OX14 3NB, United Kingdom
Phone: (44) (0) 1235 529449
Free Phone: 0800 37 34 15
Fax: (44) (0) 1235 533420
info.EMEA@bio-techne.com

General Contact Information

www.novusbio.com
Technical Support: nb-technical@bio-techne.com
Orders: nb-customerservice@bio-techne.com
General: novus@novusbio.com

Products Related to NBP2-80618

HAF007	Goat anti-Mouse IgG Secondary Antibody [HRP]
NB720-B	Rabbit anti-Mouse IgG (H+L) Secondary Antibody [Biotin]
NBP1-97005-0.5mg	Mouse IgG1 Isotype Control (MG1)
NBP2-34957-5ug	Recombinant Human CCL2/MCP1 Protein

Limitations

This product is for research use only and is not approved for use in humans or in clinical diagnosis. Primary Antibodies are guaranteed for 1 year from date of receipt.

For more information on our 100% guarantee, please visit www.novusbio.com/guarantee

Earn gift cards/discounts by submitting a review: www.novusbio.com/reviews/submit/NBP2-80618

Earn gift cards/discounts by submitting a publication using this product:
www.novusbio.com/publications

