

Product Datasheet

Calnexin Antibody (IE2.1C12) - Azide and BSA Free NBP2-80609

Unit Size: 0.1 mg

Store at 4C short term. Aliquot and store at -20C long term. Avoid freeze-thaw cycles.

www.novusbio.com



technical@novusbio.com

Protocols, Publications, Related Products, Reviews, Research Tools and Images at:
www.novusbio.com/NBP2-80609

Updated 5/27/2021 v.20.1

Earn rewards for product
reviews and publications.

Submit a publication at www.novusbio.com/publications

Submit a review at www.novusbio.com/reviews/destination/NBP2-80609



NBP2-80609

Calnexin Antibody (IE2.1C12) - Azide and BSA Free

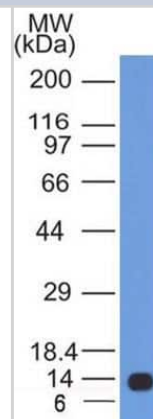
Product Information	
Unit Size	0.1 mg
Concentration	1 mg/ml
Storage	Store at 4C short term. Aliquot and store at -20C long term. Avoid freeze-thaw cycles.
Clonality	Monoclonal
Clone	IE2.1C12
Preservative	No Preservative
Isotype	IgG2b Kappa
Purity	Protein G purified
Buffer	PBS

Product Description	
Host	Mouse
Gene ID	821
Gene Symbol	CANX
Species	Human
Immunogen	Partial recombinant human Calnexin protein (between amino acids 1-300) [UniProt# P27824]

Product Application Details	
Applications	Western Blot, Flow Cytometry, Flow (Intracellular), Immunocytochemistry/Immunofluorescence, Immunohistochemistry, Immunohistochemistry-Paraffin, CyTOF-ready, Immunocytochemistry
Recommended Dilutions	Western Blot, Flow Cytometry, Immunohistochemistry 7 ug/ml, Immunocytochemistry/ Immunofluorescence 10 ug/ml, Immunohistochemistry-Paraffin, Flow (Intracellular) 5 ug/million cells, Immunocytochemistry, CyTOF-ready

Images

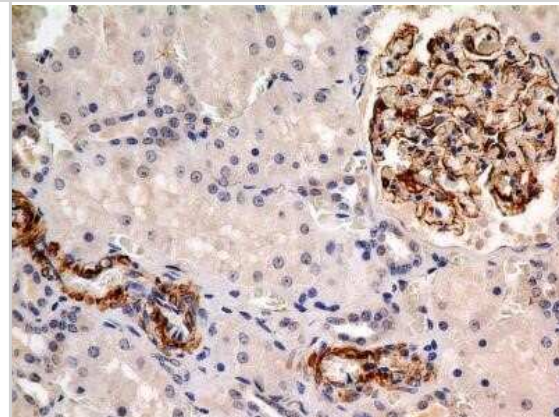
Western Blot: Calnexin Antibody (IE2.1C12) - Azide and BSA Free [NBP2-80609] - Analysis of 11 kDa Partial Recombinant Human Calnexin protein with Calnexin antibody (clone IE2.1C12) at 0.5 ug/ml concentration. Image from the standard format of this antibody.



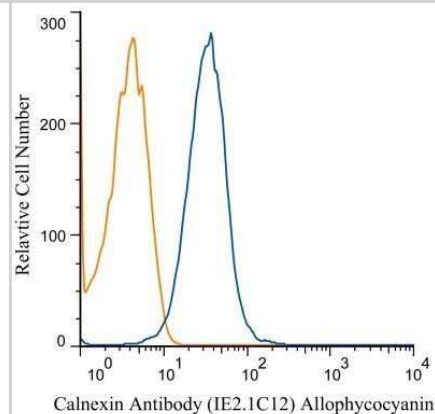
Immunocytochemistry: Calnexin Antibody (IE2.1C12) - Azide and BSA Free [NBP2-80609] - Analysis of FFPE tissue section of human placenta using mouse monoclonal Calnexin antibody (clone IE2.1C12) at 7 ug/ml concentration. Image from the standard format of this antibody.



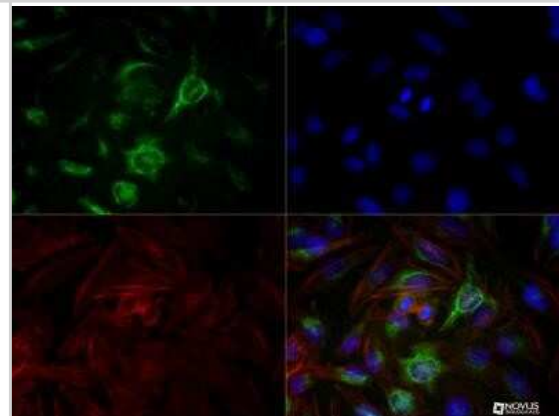
Immunohistochemistry-Paraffin: Calnexin Antibody (IE2.1C12) - Azide and BSA Free [NBP2-80609] - Analysis of FFPE tissue section of normal human kidney using mouse monoclonal Calnexin antibody (clone IE2.1C12) at 7 ug/ml concentration. The cells of Glomeruli developed strong cytoplasmic staining. Image from the standard format of this antibody.



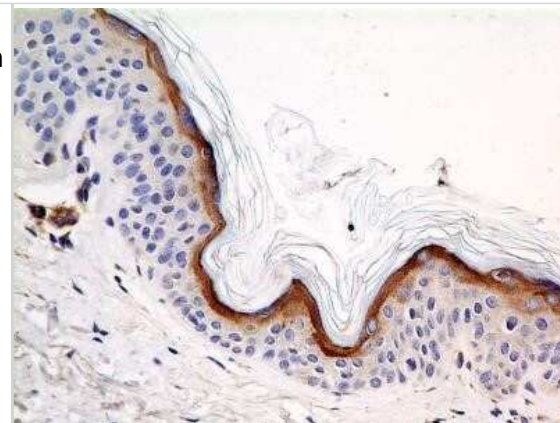
Flow Cytometry: Calnexin Antibody (IE2.1C12) - Azide and BSA Free [NBP2-80609] - Analysis of Allophycocyanin conjugate of NBP2-36571. An intracellular stain was performed on Jurkat cells with Calnexin antibody (IE2.1C12) NBP2-36571APC (blue) and a matched isotype control (orange). Cells were fixed with 4% PFA and then permeabilized with 0.1% saponin.



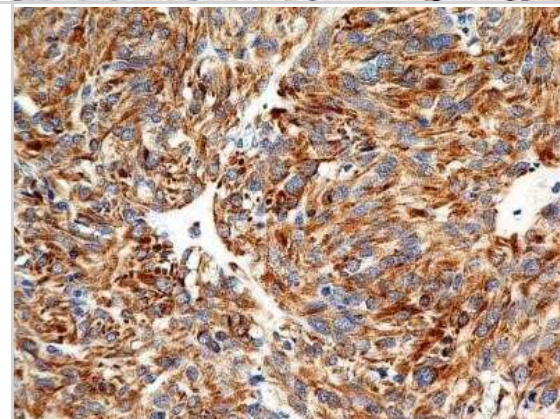
Immunocytochemistry/Immunofluorescence: Calnexin Antibody (IE2.1C12) - Azide and BSA Free [NBP2-80609] - Calnexin (1E2.1C12) antibody was tested in Hela cells with DyLight488 (green). Nuclei and alpha-tubulin were counterstained with DAPI (blue) and DyLight 550 (red). Image from the standard format of this antibody.



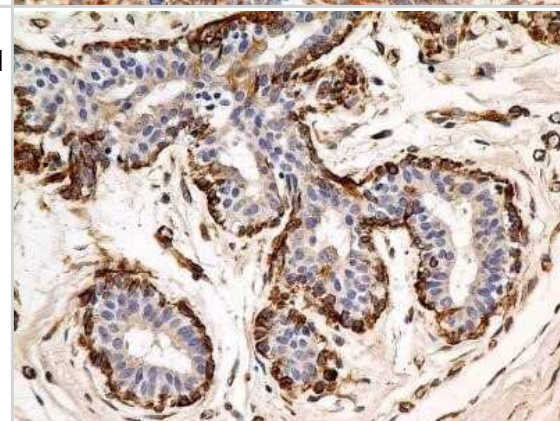
Immunohistochemistry-Paraffin: Calnexin Antibody (IE2.1C12) - Azide and BSA Free [NBP2-80609] - Analysis of FFPE tissue section of human skin using mouse monoclonal Calnexin antibody (clone IE2.1C12) at 7 ug/ml concentration. The outermost keratinocytes layer of the epidermis showed cytoplasmic positivity for Calnexin protein. Image from the standar



Immunohistochemistry-Paraffin: Calnexin Antibody (IE2.1C12) - Azide and BSA Free [NBP2-80609] - Analysis of FFPE tissue section of malignant stromal tumor of the human small bowel using mouse monoclonal Calnexin antibody (clone IE2.1C12) at 7 ug/ml concentration. The cancer cells showed a very strong cytoplasmic reactivity for Calnexin. Image from t



Immunohistochemistry-Paraffin: Calnexin Antibody (IE2.1C12) - Azide and BSA Free [NBP2-80609] - Analysis of FFPE tissue section of normal human breast using mouse monoclonal Calnexin antibody (clone IE2.1C12) at 7 ug/ml concentration. The myoepithelial cells around the lobules depicted a very strong cytoplasmic staining. Image from the standard form





Novus Biologicals USA

10730 E. Briarwood Avenue
Centennial, CO 80112
USA
Phone: 303.730.1950
Toll Free: 1.888.506.6887
Fax: 303.730.1966
nb-customerservice@bio-techne.com

Bio-Techne Canada

21 Canmotor Ave
Toronto, ON M8Z 4E6
Canada
Phone: 905.827.6400
Toll Free: 855.668.8722
Fax: 905.827.6402
canada.inquires@bio-techne.com

Bio-Techne Ltd

19 Barton Lane
Abingdon Science Park
Abingdon, OX14 3NB, United Kingdom
Phone: (44) (0) 1235 529449
Free Phone: 0800 37 34 15
Fax: (44) (0) 1235 533420
info.EMEA@bio-techne.com

General Contact Information

www.novusbio.com
Technical Support: nb-technical@bio-techne.com
Orders: nb-customerservice@bio-techne.com
General: novus@novusbio.com

Products Related to NBP2-80609

HAF007	Goat anti-Mouse IgG Secondary Antibody [HRP]
NB720-B	Rabbit anti-Mouse IgG (H+L) Secondary Antibody [Biotin]
NBP1-43317-0.5mg	Mouse IgG2b Kappa Light Chain Isotype Control (MG2b)
NB100-1965PEP	Calnexin Antibody Blocking Peptide

Limitations

This product is for research use only and is not approved for use in humans or in clinical diagnosis. Primary Antibodies are guaranteed for 1 year from date of receipt.

For more information on our 100% guarantee, please visit www.novusbio.com/guarantee

Earn gift cards/discounts by submitting a review: www.novusbio.com/reviews/submit/NBP2-80609

Earn gift cards/discounts by submitting a publication using this product:
www.novusbio.com/publications

