

Product Datasheet

CD20 Antibody (L26) - Azide and BSA Free NBP2-80486

Unit Size: 100 ug

Store at -20 to -80C. Avoid freeze-thaw cycles.

www.novusbio.com



technical@novusbio.com

Publications: 1

Protocols, Publications, Related Products, Reviews, Research Tools and Images at:
www.novusbio.com/NBP2-80486

Updated 7/16/2024 v.20.1

Earn rewards for product
reviews and publications.

Submit a publication at www.novusbio.com/publications

Submit a review at www.novusbio.com/reviews/destination/NBP2-80486



NBP2-80486

CD20 Antibody (L26) - Azide and BSA Free

Product Information	
Unit Size	100 ug
Concentration	1 mg/ml
Storage	Store at -20 to -80C. Avoid freeze-thaw cycles.
Clonality	Monoclonal
Clone	L26
Preservative	No Preservative
Isotype	IgG2a
Purity	Protein A or G purified
Buffer	10 mM PBS

Product Description	
Description	1.0 mg/ml of antibody purified from Bioreactor Concentrate by Protein A/G. Prepared in 10mM PBS WITHOUT BSA & azide. Also available at 200 ug/ml WITH BSA & azide. Antibody with azide - store at 2 to 8C. Antibody without azide - store at -20 to -80C.
Host	Mouse
Gene ID	931
Gene Symbol	MS4A1
Species	Human
Reactivity Notes	Others not known.
Marker	B-Cell Marker
Specificity/Sensitivity	Recognizes a protein of 30-33kDa, which is identified as CD20. Its epitope is located in the cytoplasmic domain of CD20 and was, therefore, ascribed as CD20cy in the 5th Workshop. CD20 is a non-Ig differentiation antigen of B-cells and its expression is restricted to normal and neoplastic B-cells, being absent from all other leukocytes and tissues. CD20 is expressed by pre B-cells and persists during all stages of B-cell maturation but is lost upon terminal differentiation into plasma cells. This MAb can be used for immunophenotyping of leukemia and malignant cells, B lymphocyte detection in peripheral blood and B cell localization in tissues. It reacts with the majority of B-cells present in peripheral blood and lymphoid tissues and their derived lymphomas. In lymphoid tissue, germinal center blasts and B-immunoblasts are particularly reactive. It is a reliable antibody for ascribing a B-cell phenotype in known lymphoid tissues. Rarely, CD20-positive T-cell lymphomas have been reported. Reactivity has also been noted with Reed-Sternberg cells in cases of Hodgkins disease, particularly of lymphocyte predominant type.
Immunogen	Human tonsil B cells

Product Application Details	
Applications	Western Blot, Flow Cytometry, Immunocytochemistry/ Immunofluorescence, Immunohistochemistry, Immunohistochemistry-Paraffin, CyTOF-ready
Recommended Dilutions	Western Blot 1 - 2 ug/ml, Flow Cytometry 0.5-1ug/million cells, Immunohistochemistry 0.5-1 ug/ml, Immunocytochemistry/ Immunofluorescence 1-2 ug/ml, Immunohistochemistry-Paraffin 0.5-1 ug/ml, CyTOF-ready

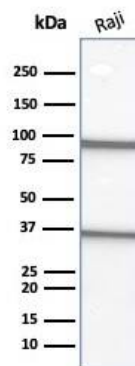


Application Notes

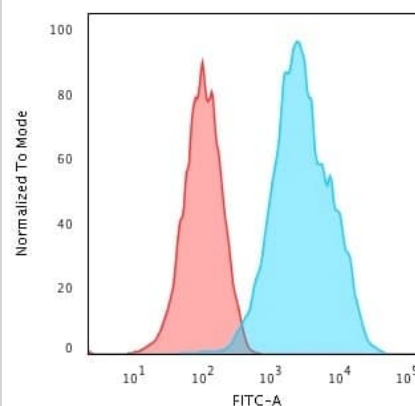
Immunohistochemistry (Formalin-fixed): 0.5-1ug/ml for 30 minutes at RT. Staining of formalin-fixed tissues requires heating tissue sections in 10mM Tris with 1mM EDTA, pH 9.0, for 45 min at 95C followed by cooling at RT for 20 minutes.
Optimal dilution for a specific application should be determined.

Images

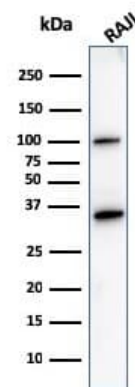
Western Blot Analysis of Raji cell lysate using CD20 Antibody (L26).



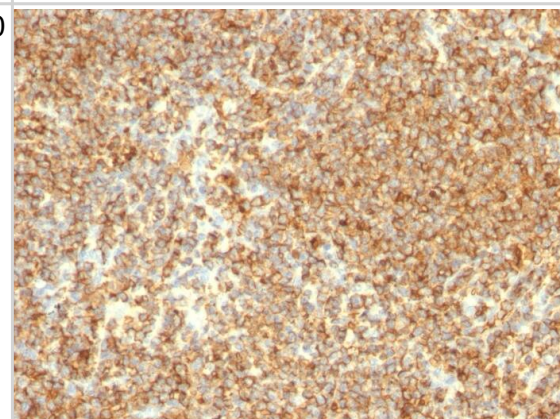
Flow Cytometric Analysis of Raji Cells. using CD20 Antibody (L26) followed by Goat anti-mouse IgG-CF488 (Blue); Isotype Control (Red).



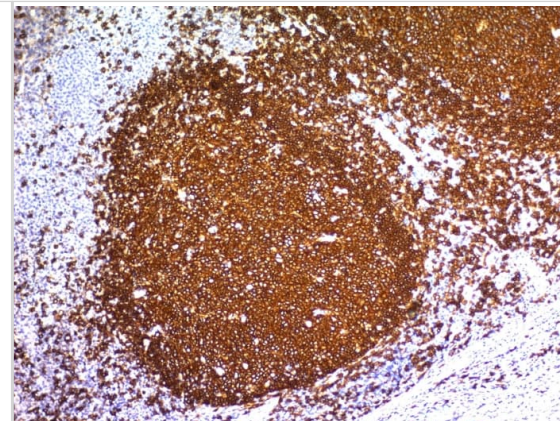
Western Blot Analysis of Raji cell lysate using CD20 Antibody (L26).



Formalin-fixed, paraffin-embedded human Lymphoma stained with CD20 Antibody (L26).



Formalin-fixed, paraffin-embedded human Tonsil stained with CD20 Antibody (L26).



Publications

Hussein Alnajar, Hiranmayi Ravichandran, André Figueiredo Rendeiro, Kentaro Ohara, Wael Al Zoughbi, Jyothi Manohar, Noah Greco, Michael Sigouros, Jesse Fox, Emily Muth, Samuel Angiuoli, Bishoy Faltas, Michael Shusterman, Cora N. Sternberg, Olivier Elemento, Juan Miguel Mosquera Tumor-immune microenvironment revealed by Imaging Mass Cytometry in a metastatic sarcomatoid urothelial carcinoma with a prolonged response to pembrolizumab Cold Spring Harbor Molecular Case Studies 2022-04-01 [PMID: 35483877]



Novus Biologicals USA

10730 E. Briarwood Avenue
Centennial, CO 80112
USA
Phone: 303.730.1950
Toll Free: 1.888.506.6887
Fax: 303.730.1966
nb-customerservice@bio-techne.com

Bio-Techne Canada

21 Canmotor Ave
Toronto, ON M8Z 4E6
Canada
Phone: 905.827.6400
Toll Free: 855.668.8722
Fax: 905.827.6402
canada.inquires@bio-techne.com

Bio-Techne Ltd

19 Barton Lane
Abingdon Science Park
Abingdon, OX14 3NB, United Kingdom
Phone: (44) (0) 1235 529449
Free Phone: 0800 37 34 15
Fax: (44) (0) 1235 533420
info.EMEA@bio-techne.com

General Contact Information

www.novusbio.com
Technical Support: nb-technical@bio-techne.com
Orders: nb-customerservice@bio-techne.com
General: novus@novusbio.com

Products Related to NBP2-80486

HAF007	Goat anti-Mouse IgG Secondary Antibody [HRP]
NB720-B	Rabbit anti-Mouse IgG (H+L) Secondary Antibody [Biotin]
NBP1-96778	Mouse IgG2a Isotype Control (M2A)
NBP2-61455-10ug	Recombinant Human CD20 His Protein

Limitations

This product is for research use only and is not approved for use in humans or in clinical diagnosis. Primary Antibodies are guaranteed for 1 year from date of receipt.

For more information on our 100% guarantee, please visit www.novusbio.com/guarantee

Earn gift cards/discounts by submitting a review: www.novusbio.com/reviews/submit/NBP2-80486

Earn gift cards/discounts by submitting a publication using this product:
www.novusbio.com/publications

