

Product Datasheet

Human Cystatin E/M/CST6 ELISA Kit (Colorimetric) NBP2-80316

Unit Size: 1 Kit

Storage is content dependent.

www.novusbio.com



technical@novusbio.com

Protocols, Publications, Related Products, Reviews, Research Tools and Images at:
www.novusbio.com/NBP2-80316

Updated 9/5/2023 v.20.1

Earn rewards for product
reviews and publications.

Submit a publication at www.novusbio.com/publications

Submit a review at www.novusbio.com/reviews/destination/NBP2-80316



NBP2-80316**Human Cystatin E/M/CST6 ELISA Kit (Colorimetric)**

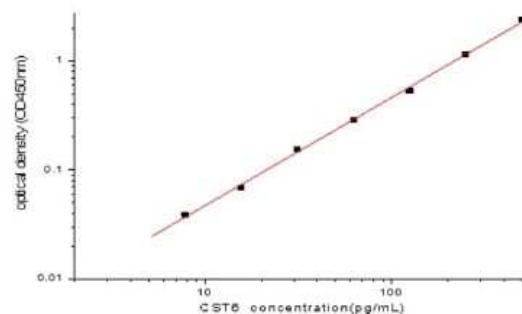
Product Information	
Unit Size	1 Kit
Concentration	Concentration is not relevant for this product. Please see the protocols for proper use of this product.
Storage	Storage is content dependent.
Conjugate	HRP

Product Description	
Gene ID	1474
Gene Symbol	CST6
Species	Human
Specificity/Sensitivity	Recognizes both recombinant and natural Human Cystatin E/M/CST6.
Kit Components	1. 96 well microplate coated with Capture Antibody, 2. Detection Antibody conjugated to HRP, 3. Standards, 4. Wash Buffer Concentrate, 5. Dilution Buffer Concentrate, 6. Color Reagent A, 7. Color Reagent B, 8. Stop Solution
Standard Curve Range	7.8-500 pg/ml (example only; lot dependent)
Sensitivity	1.51 pg/ml
Inter Assay	CV% < 3.13
Intra Assay	CV% < 3.83
Assay Type	Sandwich ELISA
Spiking Recovery	110-116%
Suitable Sample Type	Serum
Sample Volume	100 ul

Product Application Details	
Applications	ELISA, Sandwich ELISA
Recommended Dilutions	ELISA, Sandwich ELISA

Images

ELISA: Human Cystatin E/M/CST6 ELISA Kit (Colorimetric) [NBP2-80316] - Example standard curve for Human Cystatin E/M/CST6 ELISA Kit (Colorimetric). These standard curves are provided for demonstration only. A standard curve should be generated for each set of samples assayed.





Novus Biologicals USA

10730 E. Briarwood Avenue
Centennial, CO 80112
USA
Phone: 303.730.1950
Toll Free: 1.888.506.6887
Fax: 303.730.1966
nb-customerservice@bio-techne.com

Bio-Techne Canada

21 Canmotor Ave
Toronto, ON M8Z 4E6
Canada
Phone: 905.827.6400
Toll Free: 855.668.8722
Fax: 905.827.6402
canada.inquires@bio-techne.com

Bio-Techne Ltd

19 Barton Lane
Abingdon Science Park
Abingdon, OX14 3NB, United Kingdom
Phone: (44) (0) 1235 529449
Free Phone: 0800 37 34 15
Fax: (44) (0) 1235 533420
info.EMEA@bio-techne.com

General Contact Information

www.novusbio.com
Technical Support: nb-technical@bio-techne.com
Orders: nb-customerservice@bio-techne.com
General: novus@novusbio.com

Products Related to NBP2-80316

NBP2-33433PEP	Cystatin E/M/CST6 Recombinant Protein Antigen
D6050	IL-6 [HRP]
AF1286	Cystatin E/M/CST6 Antibody [Unconjugated]
MAB1455	Albumin Antibody (188835) [Unconjugated] - Serum

Limitations

This product is for research use only and is not approved for use in humans or in clinical diagnosis. ELISA Kits are guaranteed for 6 months from date of receipt.

For more information on our 100% guarantee, please visit www.novusbio.com/guarantee

Earn gift cards/discounts by submitting a review: www.novusbio.com/reviews/submit/NBP2-80316

Earn gift cards/discounts by submitting a publication using this product:
www.novusbio.com/publications

