

# Product Datasheet

## Bim Antibody (3C5) - BSA Free NBP2-80102

Unit Size: 100 ug

Store at 4C short term. Aliquot and store at -20C long term. Avoid freeze-thaw cycles.

[www.novusbio.com](http://www.novusbio.com)



[technical@novusbio.com](mailto:technical@novusbio.com)

Protocols, Publications, Related Products, Reviews, Research Tools and Images at:  
[www.novusbio.com/NBP2-80102](http://www.novusbio.com/NBP2-80102)

Updated 4/3/2022 v.20.1

Earn rewards for product  
reviews and publications.

Submit a publication at [www.novusbio.com/publications](http://www.novusbio.com/publications)

Submit a review at [www.novusbio.com/reviews/destination/NBP2-80102](http://www.novusbio.com/reviews/destination/NBP2-80102)



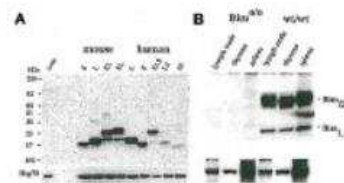
**NBP2-80102**

Bim Antibody (3C5) - BSA Free

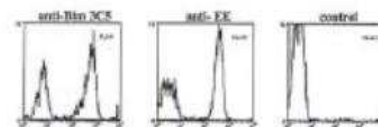
<b>Product Information</b>	
<b>Unit Size</b>	100 ug
<b>Concentration</b>	1 mg/ml
<b>Storage</b>	Store at 4C short term. Aliquot and store at -20C long term. Avoid freeze-thaw cycles.
<b>Clonality</b>	Monoclonal
<b>Clone</b>	3C5
<b>Preservative</b>	0.02% Sodium Azide
<b>Isotype</b>	IgG2a Kappa
<b>Purity</b>	Protein G purified
<b>Buffer</b>	PBS containing 25% glycerol
<b>Product Description</b>	
<b>Host</b>	Rat
<b>Gene ID</b>	10018
<b>Gene Symbol</b>	BCL2L11
<b>Species</b>	Human, Mouse, Rat, Canine, Monkey
<b>Specificity/Sensitivity</b>	Recognizes an epitope within aa 20-40 of human, mouse, rat, monkey and dog BimL (~19kDa), BimEL (~23kDa), and BimS (~16kDa). Also recognizes the six novel isoforms of human Bim, generated by alternative splicing and lacking the C-terminal hydrophobic region.
<b>Immunogen</b>	Synthetic peptide corresponding to aa 20-40 of mouse BimL.
<b>Product Application Details</b>	
<b>Applications</b>	Western Blot, ELISA, Flow Cytometry, Immunocytochemistry/Immunofluorescence, Immunohistochemistry, Immunoprecipitation
<b>Recommended Dilutions</b>	Western Blot 1-5 ug/ml, Flow Cytometry, ELISA, Immunohistochemistry, Immunocytochemistry/Immunofluorescence, Immunoprecipitation 1-2 ug/ml

## Images

Western Blot: Bim Antibody (3C5) [NBP2-80102] - Detecting EE mouse BimS, BimL, BimEL and EE human, BimSS, BimS, BimLS, BimL, BimELS, BimEL. Probing with an anti-Hsp-70 mAb was used as a loading control for all blots. B) Western blot using anti-Bim, mAb (3C5) detecting endogenous Bim expression in mouse tissues but not in Bim knockout mice. Bim protein was revealed in lysates from mouse tissues (5 x 10<sup>6</sup>/lane) and detection by ECL. Probing with an anti-Hsp-70 mAb was used as a loading control.



Flow Cytometry: Bim Antibody (3C5) [NBP2-80102] - Data in permeabilized and fixed transfected cells using anti-Bim, mAb (3C5) anti-EE (positive control) or secondary antibody alone (negative control). Staining was visualised by FITC-conjugated goat anti-rat or anti-mouse IgG antibodies.





### **Novus Biologicals USA**

10730 E. Briarwood Avenue  
Centennial, CO 80112  
USA  
Phone: 303.730.1950  
Toll Free: 1.888.506.6887  
Fax: 303.730.1966  
nb-customerservice@bio-techne.com

### **Bio-Techne Canada**

21 Canmotor Ave  
Toronto, ON M8Z 4E6  
Canada  
Phone: 905.827.6400  
Toll Free: 855.668.8722  
Fax: 905.827.6402  
canada.inquires@bio-techne.com

### **Bio-Techne Ltd**

19 Barton Lane  
Abingdon Science Park  
Abingdon, OX14 3NB, United Kingdom  
Phone: (44) (0) 1235 529449  
Free Phone: 0800 37 34 15  
Fax: (44) (0) 1235 533420  
info.EMEA@bio-techne.com

### **General Contact Information**

www.novusbio.com  
Technical Support: nb-technical@bio-techne.com  
Orders: nb-customerservice@bio-techne.com  
General: novus@novusbio.com

### **Products Related to NBP2-80102**

---

NBP2-33376H	Blue Marker Antibody (6F4-F6) [HRP]
HAF005	Goat anti-Rat IgG Secondary Antibody [HRP]
NBP1-75398	Goat anti-Rat IgG (H+L) Secondary Antibody (Pre-adsorbed)
NBP1-43321-0.5mg	Rat IgG2a Kappa Light Chain Isotype Control (R2a)

---

### **Limitations**

This product is for research use only and is not approved for use in humans or in clinical diagnosis. Primary Antibodies are guaranteed for 1 year from date of receipt.

For more information on our 100% guarantee, please visit [www.novusbio.com/guarantee](http://www.novusbio.com/guarantee)

Earn gift cards/discounts by submitting a review: [www.novusbio.com/reviews/submit/NBP2-80102](http://www.novusbio.com/reviews/submit/NBP2-80102)

Earn gift cards/discounts by submitting a publication using this product:  
[www.novusbio.com/publications](http://www.novusbio.com/publications)

