

# Product Datasheet

## Mesothelin Antibody (MSLN/2131) - Azide and BSA Free NBP2-79858

Unit Size: 100 ug

Store at -20 to -80C. Avoid freeze-thaw cycles.

[www.novusbio.com](http://www.novusbio.com)



[technical@novusbio.com](mailto:technical@novusbio.com)

Protocols, Publications, Related Products, Reviews, Research Tools and Images at:  
[www.novusbio.com/NBP2-79858](http://www.novusbio.com/NBP2-79858)

Updated 10/23/2024 v.20.1

Earn rewards for product  
reviews and publications.

Submit a publication at [www.novusbio.com/publications](http://www.novusbio.com/publications)

Submit a review at [www.novusbio.com/reviews/destination/NBP2-79858](http://www.novusbio.com/reviews/destination/NBP2-79858)



**NBP2-79858**

Mesothelin Antibody (MSLN/2131) - Azide and BSA Free

Product Information	
Unit Size	100 ug
Concentration	1 mg/ml
Storage	Store at -20 to -80C. Avoid freeze-thaw cycles.
Clonality	Monoclonal
Clone	MSLN/2131
Preservative	No Preservative
Isotype	IgG2b Kappa
Purity	Protein A or G purified
Buffer	10 mM PBS

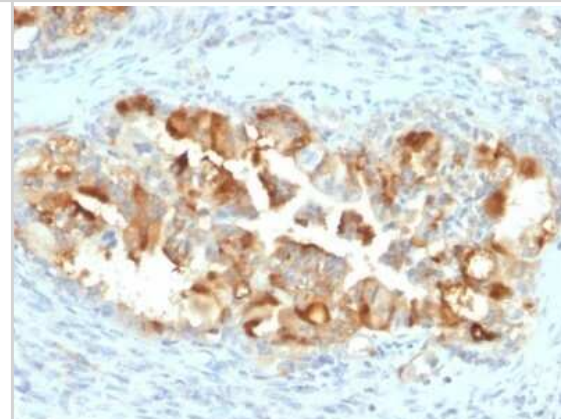
Product Description	
Description	1.0 mg/ml of antibody purified from Bioreactor Concentrate by Protein A/G. Prepared in 10mM PBS WITHOUT BSA & azide. Also available at 200 ug/ml WITH BSA & azide (NBP2-79724).  Antibody with azide - store at 2 to 8C. Antibody without azide - store at -20 to -80C.
Host	Mouse
Gene ID	10232
Gene Symbol	MSLN
Species	Human, Mouse, Rat
Marker	Mesothelial Marker
Immunogen	Recombinant fragment (around aa 273-407) of human Mesothelin (MSLN) protein (exact sequence is proprietary) (Uniprot: Q13421)

Product Application Details	
Applications	Immunohistochemistry, Immunohistochemistry-Paraffin, Protein Array
Recommended Dilutions	Immunohistochemistry 1-2 ug/ml, Immunohistochemistry-Paraffin 1-2 ug/ml, Protein Array
Application Notes	Immunohistochemistry (Formalin-fixed): 1-2ug/ml for 30 minutes at RT. Staining of formalin-fixed tissues requires heating tissue sections in 10mM Tris with 1mM EDTA, pH 9.0, for 45 min at 95C followed by cooling at RT for 20 minutes. Optimal dilution for a specific application should be determined.



## Images

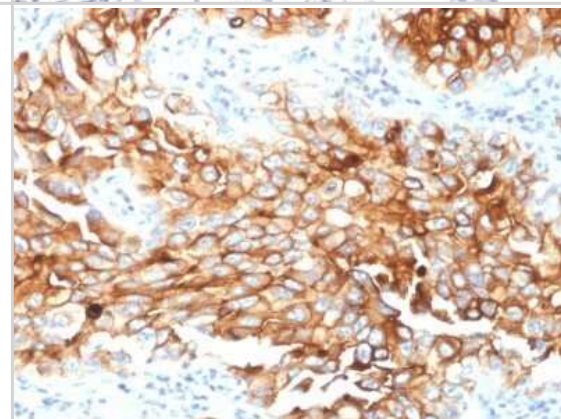
Immunohistochemistry-Paraffin: Mesothelin Antibody (MSLN/2131) - Azide and BSA Free [NBP2-79858] - Formalin-fixed, paraffin-embedded human Endometrial Carcinoma stained with Mesothelin Antibody (MSLN/2131).



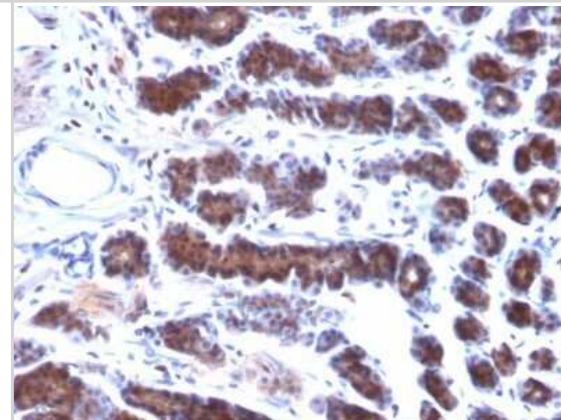
Immunohistochemistry-Paraffin: Mesothelin Antibody (MSLN/2131) - Azide and BSA Free [NBP2-79858] - Formalin-fixed, paraffin-embedded Mouse Lung stained with Mesothelin Antibody (MSLN/2131).



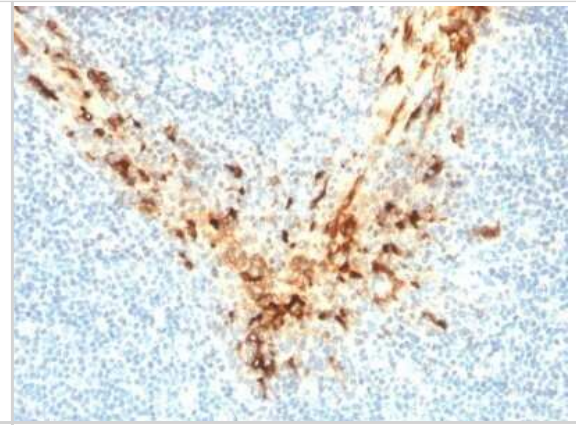
Immunohistochemistry-Paraffin: Mesothelin Antibody (MSLN/2131) - Azide and BSA Free [NBP2-79858] - Formalin-fixed, paraffin-embedded human Lung Mesothelioma stained with Mesothelin Antibody (MSLN/2131).



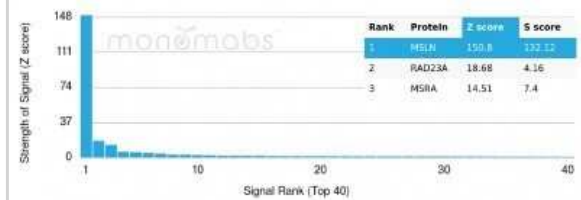
Immunohistochemistry-Paraffin: Mesothelin Antibody (MSLN/2131) - Azide and BSA Free [NBP2-79858] - Formalin-fixed, paraffin-embedded Rat Stomach stained with Mesothelin Antibody (MSLN/2131).



Immunohistochemistry-Paraffin: Mesothelin Antibody (MSLN/2131) - Azide and BSA Free [NBP2-79858] - Formalin-fixed, paraffin-embedded human Tonsil stained with Mesothelin Antibody (MSLN/2131).



Protein Array: Mesothelin Antibody (MSLN/2131) - Azide and BSA Free [NBP2-79858] - Analysis of Protein Array containing more than 19,000 full-length human proteins using Mesothelin Antibody (MSLN/2131). Z- and S- Score: The Z-score represents the strength of a signal that a monoclonal antibody (MAb) (in combination with a fluorescently





### **Novus Biologicals USA**

10730 E. Briarwood Avenue  
Centennial, CO 80112  
USA  
Phone: 303.730.1950  
Toll Free: 1.888.506.6887  
Fax: 303.730.1966  
nb-customerservice@bio-techne.com

### **Bio-Techne Canada**

21 Canmotor Ave  
Toronto, ON M8Z 4E6  
Canada  
Phone: 905.827.6400  
Toll Free: 855.668.8722  
Fax: 905.827.6402  
canada.inquires@bio-techne.com

### **Bio-Techne Ltd**

19 Barton Lane  
Abingdon Science Park  
Abingdon, OX14 3NB, United Kingdom  
Phone: (44) (0) 1235 529449  
Free Phone: 0800 37 34 15  
Fax: (44) (0) 1235 533420  
info.EMEA@bio-techne.com

### **General Contact Information**

[www.novusbio.com](http://www.novusbio.com)  
Technical Support: nb-technical@bio-techne.com  
Orders: nb-customerservice@bio-techne.com  
General: novus@novusbio.com

### **Products Related to NBP2-79858**

HAF007	Goat anti-Mouse IgG Secondary Antibody [HRP]
NB720-B	Rabbit anti-Mouse IgG (H+L) Secondary Antibody [Biotin]
NBP1-43317-0.5mg	Mouse IgG2b Kappa Light Chain Isotype Control (MG2b)
NBP1-88224PEP	Mesothelin Recombinant Protein Antigen

### **Limitations**

This product is for research use only and is not approved for use in humans or in clinical diagnosis. Primary Antibodies are guaranteed for 1 year from date of receipt.

For more information on our 100% guarantee, please visit [www.novusbio.com/guarantee](http://www.novusbio.com/guarantee)

Earn gift cards/discounts by submitting a review: [www.novusbio.com/reviews/submit/NBP2-79858](http://www.novusbio.com/reviews/submit/NBP2-79858)

Earn gift cards/discounts by submitting a publication using this product:  
[www.novusbio.com/publications](http://www.novusbio.com/publications)

