

Product Datasheet

Glucose 6 phosphate isomerase Antibody (CPTC-GPI-1) - Azide and BSA Free NBP2-79845

Unit Size: 100 ug

Store at -20 to -80C. Avoid freeze-thaw cycles.

www.novusbio.com



technical@novusbio.com

Protocols, Publications, Related Products, Reviews, Research Tools and Images at:
www.novusbio.com/NBP2-79845

Updated 10/23/2024 v.20.1

Earn rewards for product
reviews and publications.

Submit a publication at www.novusbio.com/publications

Submit a review at www.novusbio.com/reviews/destination/NBP2-79845



NBP2-79845

Glucose 6 phosphate isomerase Antibody (CPTC-GPI-1) - Azide and BSA Free

Product Information	
Unit Size	100 ug
Concentration	1 mg/ml
Storage	Store at -20 to -80C. Avoid freeze-thaw cycles.
Clonality	Monoclonal
Clone	CPTC-GPI-1
Preservative	No Preservative
Isotype	IgG2a Kappa
Purity	Protein A or G purified
Buffer	10 mM PBS
Target Molecular Weight	55 kDa

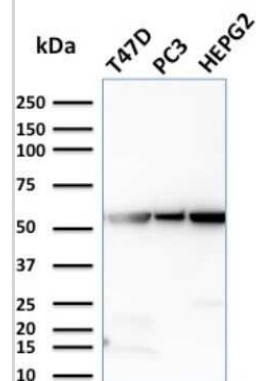
Product Description	
Description	1.0 mg/ml of antibody purified from Bioreactor Concentrate by Protein A/G. Prepared in 10mM PBS WITHOUT BSA & azide. Also available at 200 ug/ml WITH BSA & azide (NBP2-79711). Antibody with azide - store at 2 to 8C. Antibody without azide - store at -20 to -80C.
Host	Mouse
Gene ID	2821
Gene Symbol	GPI
Species	Human
Immunogen	Recombinant human full-length Glucose 6 phosphate isomerase protein (Uniprot: P06744)

Product Application Details	
Applications	Western Blot, Immunocytochemistry/ Immunofluorescence, Immunohistochemistry, Immunohistochemistry-Paraffin, Protein Array
Recommended Dilutions	Western Blot 1-2 ug/ml, Immunohistochemistry 1-2 ug/ml, Immunocytochemistry/ Immunofluorescence 1-2 ug/ml, Immunohistochemistry-Paraffin 1-2 ug/ml, Protein Array
Application Notes	Immunohistochemistry (Formalin-fixed): 1-2ug/ml for 30 min at RT. Staining of formalin-fixed tissues requires heating tissue sections in 10mM Tris with 1mM EDTA, pH 9.0, for 45 min at 95C followed by cooling at RT for 20 minutes. Optimal dilution for a specific application should be determined.

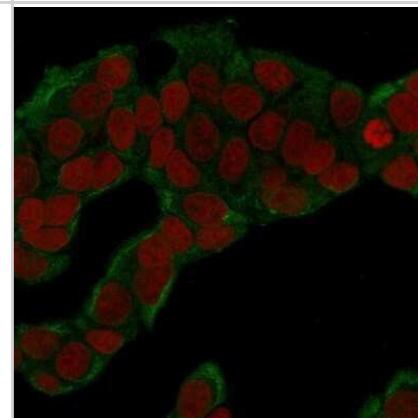


Images

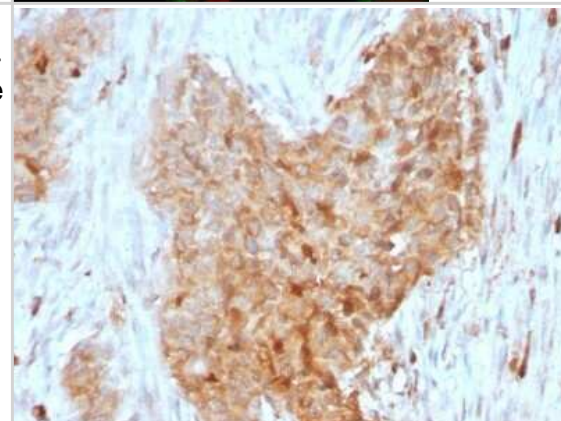
Western Blot: Glucose 6 phosphate isomerase Antibody (CPTC-GPI-1) - Azide and BSA Free [NBP2-79845] - Western Blot Analysis of T47D, PC3, HePG2 cell lysates using Glucose 6 phosphate isomerase Antibody (CPTC-GPI-1).



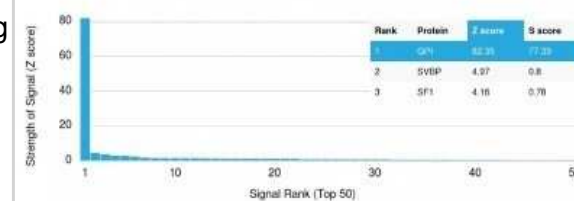
Immunocytochemistry/Immunofluorescence: Glucose 6 phosphate isomerase Antibody (CPTC-GPI-1) - Azide and BSA Free [NBP2-79845] - Immunofluorescence Analysis of human MCF-7 cells labeling GPI with Glucose 6 phosphate isomerase Antibody (CPTC-GPI-1) followed by Goat anti-Mouse IgG-CF488 (Green). The nuclear counterstain is RedDot (Red)



Immunohistochemistry-Paraffin: Glucose 6 phosphate isomerase Antibody (CPTC-GPI-1) - Azide and BSA Free [NBP2-79845] - Formalin-fixed, paraffin-embedded human Breast Carcinoma stained with Glucose 6 phosphate isomerase Antibody (CPTC-GPI-1).



Protein Array: Glucose 6 phosphate isomerase Antibody (CPTC-GPI-1) - Azide and BSA Free [NBP2-79845] - Analysis of Protein Array containing more than 19,000 full-length human proteins using Glucose 6 phosphate isomerase Antibody (CPTC-GPI-1). Z- and S- Score: The Z-score represents the strength of a signal that a monoclonal antibody (MAb) (in combination w





Novus Biologicals USA

10730 E. Briarwood Avenue
Centennial, CO 80112
USA
Phone: 303.730.1950
Toll Free: 1.888.506.6887
Fax: 303.730.1966
nb-customerservice@bio-techne.com

Bio-Techne Canada

21 Canmotor Ave
Toronto, ON M8Z 4E6
Canada
Phone: 905.827.6400
Toll Free: 855.668.8722
Fax: 905.827.6402
canada.inquires@bio-techne.com

Bio-Techne Ltd

19 Barton Lane
Abingdon Science Park
Abingdon, OX14 3NB, United Kingdom
Phone: (44) (0) 1235 529449
Free Phone: 0800 37 34 15
Fax: (44) (0) 1235 533420
info.EMEA@bio-techne.com

General Contact Information

www.novusbio.com
Technical Support: nb-technical@bio-techne.com
Orders: nb-customerservice@bio-techne.com
General: novus@novusbio.com

Products Related to NBP2-79845

HAF007	Goat anti-Mouse IgG Secondary Antibody [HRP]
NB720-B	Rabbit anti-Mouse IgG (H+L) Secondary Antibody [Biotin]
NBP1-96981-0.5mg	Mouse IgG2a Kappa Isotype Control (M2AK)
NBP2-52232-0.02mg	Recombinant Human Glucose 6 phosphate isomerase His Protein

Limitations

This product is for research use only and is not approved for use in humans or in clinical diagnosis. Primary Antibodies are guaranteed for 1 year from date of receipt.

For more information on our 100% guarantee, please visit www.novusbio.com/guarantee

Earn gift cards/discounts by submitting a review: www.novusbio.com/reviews/submit/NBP2-79845

Earn gift cards/discounts by submitting a publication using this product:
www.novusbio.com/publications

