

# Product Datasheet

## HLA DQ/DR/DP Antibody (HLA-Pan/2967R) NBP2-79709-100ug

Unit Size: 100 ug

Store at 4C.

[www.novusbio.com](http://www.novusbio.com)



[technical@novusbio.com](mailto:technical@novusbio.com)

Protocols, Publications, Related Products, Reviews, Research Tools and Images at:  
[www.novusbio.com/NBP2-79709](http://www.novusbio.com/NBP2-79709)

Updated 10/23/2024 v.20.1

Earn rewards for product  
reviews and publications.

Submit a publication at [www.novusbio.com/publications](http://www.novusbio.com/publications)

Submit a review at [www.novusbio.com/reviews/destination/NBP2-79709](http://www.novusbio.com/reviews/destination/NBP2-79709)



**NBP2-79709-100ug**

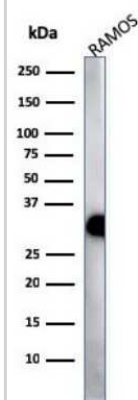
HLA DQ/DR/DP Antibody (HLA-Pan/2967R)

Product Information	
Unit Size	100 ug
Concentration	0.2 mg/ml
Storage	Store at 4C.
Clonality	Monoclonal
Clone	HLA-Pan/2967R
Preservative	0.05% Sodium Azide
Isotype	IgG
Purity	Protein A or G purified
Buffer	10 mM PBS with 0.05% BSA
Product Description	
Description	<p>200ug/ml of antibody purified from Bioreactor Concentrate by Protein A or G. Prepared in 10 mM PBS with 0.05% BSA &amp; 0.05% azide. Also available WITHOUT BSA &amp; azide at 1.0 mg/ml. (NBP2-79843)</p> <p>Antibody with azide - store at 2 to 8C. Antibody without azide - store at -20 to -80 C.</p>
Host	Rabbit
Gene ID	3117
Gene Symbol	HLA-DQA1
Species	Human
Specificity/Sensitivity	<p>Reacts with a common epitope of human major histocompatibility (MHC) class II antigens, HLA-DP, -DQ and -DR. Human MHC class II antigens are transmembrane glycoproteins composed of an alpha chain (36kDa) and a beta chain (27kDa). They are expressed primarily on antigen presenting cells such as B lymphocytes, monocytes, macrophages, and thymic epithelial cells and are also present on activated T lymphocytes. Human MHC class II genes are located in the HLA-D region that encodes at least six and ten genes. Three loci, DR, DQ and DP, encode the major expressed products of the human class II region. The human MHC class II molecules bind intracellularly processed peptides and present them to T-helper cells. They, therefore, have a critical role in the initiation of the immune response. It has been shown that some autoimmune diseases are associated with certain class II alleles.</p>
Immunogen	Non-T, non-B human acute lymphoblastic leukemia REH6 cell line
Product Application Details	
Applications	Western Blot, ELISA, Flow Cytometry, Immunocytochemistry/ Immunofluorescence, Immunohistochemistry, Immunohistochemistry-Paraffin, Protein Array
Recommended Dilutions	Western Blot 1-2 ug/ml, Flow Cytometry 1-2 ug/million cells, ELISA 2-5 ug/ml, Immunohistochemistry 1-2 ug/ml, Immunocytochemistry/ Immunofluorescence 1-2 ug/ml, Immunohistochemistry-Paraffin 1-2 ug/ml, Protein Array
Application Notes	<p>ELISA: For coating use Ab at 2-5ug/ml, order Ab without BSA.</p> <p>Immunohistochemistry (Formalin-fixed): 1-2ug/ml for 30 minutes at RT. Staining of formalin-fixed tissues requires heating tissue sections in 10mM Tris with 1mM EDTA, pH 9.0, for 45 min at 95C followed by cooling at RT for 20 minutes. Optimal dilution for a specific application should be determined.</p>

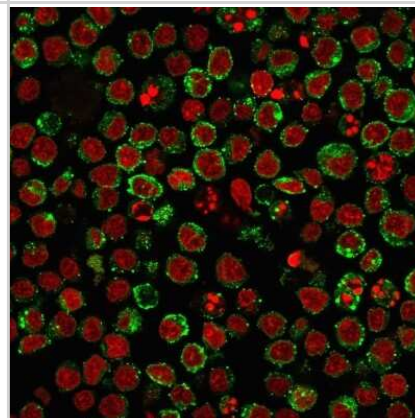


## Images

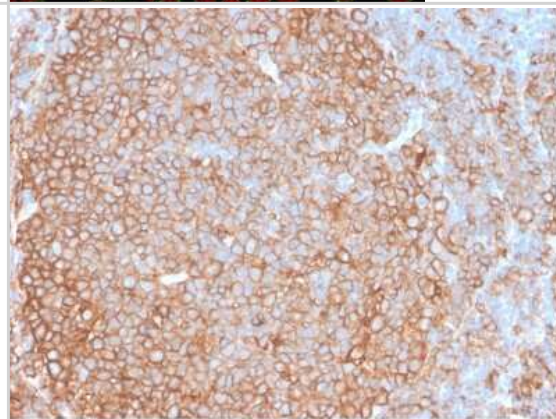
Western Blot: HLA DQ/DR/DP Antibody (HLA-Pan/2967R) [NBP2-79709] - Western Blot Analysis of Ramos cell lysate using HLA DQ/DR/DP Antibody (HLA-Pan/2967R).



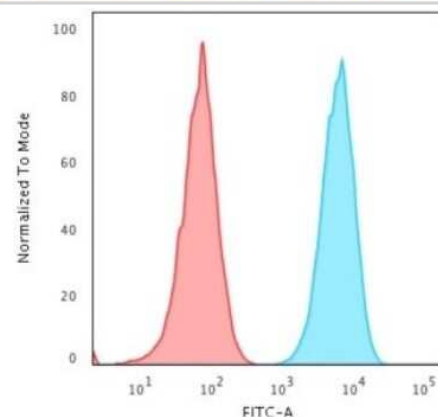
Immunocytochemistry/Immunofluorescence: HLA DQ/DR/DP Antibody (HLA-Pan/2967R) [NBP2-79709] - Immunofluorescence staining of PFA-fixed Ramos cells. HLA DQ/DR/DP Recombinant Rabbit Monoclonal Antibody (HLA DQ/DR/DP/2967R) followed by goat anti-rabbit IgG-CF488 (green). Nuclei stained with RedDot.



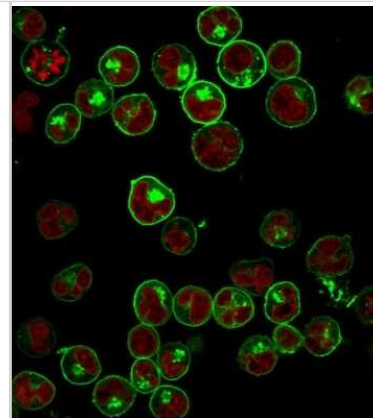
Immunohistochemistry-Paraffin: HLA DQ/DR/DP Antibody (HLA-Pan/2967R) [NBP2-79709] - Formalin-fixed, paraffin-embedded human Tonsil stained with HLA DQ/DR/DP Antibody (HLA-Pan/2967R).



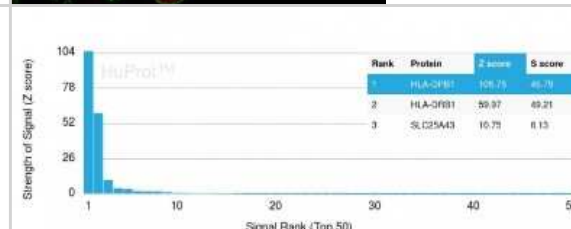
Flow Cytometry: HLA DQ/DR/DP Antibody (HLA-Pan/2967R) [NBP2-79709] - Flow Cytometric Analysis of Raji cells using HLA DQ/DR/DP Antibody (HLA-Pan/2967R) followed by goat anti-rabbit IgG-CF488 (Blue); Isotype control (Red).



Immunocytochemistry/Immunofluorescence: HLA DQ/DR/DP Antibody (HLA-Pan/2967R) [NBP2-79709] - Immunofluorescence staining of Raji cells using HLA DQ/DR/DP Antibody (HLA-Pan/2967R) followed by goat anti-rabbit IgG-CF488 (Green). Nuclei stained with RedDot (Red).



Protein Array: HLA DQ/DR/DP Antibody (HLA-Pan/2967R) [NBP2-79709] - Analysis of Protein Array containing more than 19,000 full-length human proteins using HLA DQ/DR/DP Antibody (HLA-Pan/2967R). Z- and S- Score: The Z-score represents the strength of a signal that a monoclonal antibody (MAb) (in combination with a fluorescently-tagged anti-IgG secondary antibody) produces when binding to a particular protein on the HuProt(TM) array. Z-scores are described in units of standard deviations (SD's) above the mean value of all signals generated on that array. If targets on HuProt(TM) are arranged in descending order of the Z-score, the S-score is the difference (also in units of SD's) between the Z-score. S-score therefore represents the relative target specificity of a MAb to its intended target. A MAb is considered to specific to its intended target, if the MAb has an S-score of at least 2.5.



**Novus Biologicals USA**

10730 E. Briarwood Avenue  
Centennial, CO 80112  
USA  
Phone: 303.730.1950  
Toll Free: 1.888.506.6887  
Fax: 303.730.1966  
nb-customerservice@bio-techne.com

**Bio-Techne Canada**

21 Canmotor Ave  
Toronto, ON M8Z 4E6  
Canada  
Phone: 905.827.6400  
Toll Free: 855.668.8722  
Fax: 905.827.6402  
canada.inquires@bio-techne.com

**Bio-Techne Ltd**

19 Barton Lane  
Abingdon Science Park  
Abingdon, OX14 3NB, United Kingdom  
Phone: (44) (0) 1235 529449  
Free Phone: 0800 37 34 15  
Fax: (44) (0) 1235 533420  
info.EMEA@bio-techne.com

**General Contact Information**

[www.novusbio.com](http://www.novusbio.com)  
Technical Support: nb-technical@bio-techne.com  
Orders: nb-customerservice@bio-techne.com  
General: novus@novusbio.com

**Products Related to NBP2-79709-100ug**

---

HAF008	Goat anti-Rabbit IgG Secondary Antibody [HRP]
NB7160	Goat anti-Rabbit IgG (H+L) Secondary Antibody [HRP]
NBP2-24891	Rabbit IgG Isotype Control
210-TA-005	TNF-alpha [Unconjugated]

---

**Limitations**

This product is for research use only and is not approved for use in humans or in clinical diagnosis. Primary Antibodies are guaranteed for 1 year from date of receipt.

For more information on our 100% guarantee, please visit [www.novusbio.com/guarantee](http://www.novusbio.com/guarantee)

Earn gift cards/discounts by submitting a review: [www.novusbio.com/reviews/submit/NBP2-79709](http://www.novusbio.com/reviews/submit/NBP2-79709)

Earn gift cards/discounts by submitting a publication using this product:  
[www.novusbio.com/publications](http://www.novusbio.com/publications)

